

**Austin-Bergstrom International Airport
Aviation Activity Report
Calendar Year 2019 vs 2018**

Combined Terminals

	9/2019	9/2018	Percent Change	1/2019 - 9/2019	1/2018 - 9/2018	Percent Change
ABIA						
Total Passenger Activity						
Domestic Enplaned Revenue	621,563	585,214	6.21	5,692,221	5,452,879	4.39
Domestic Deplaned Revenue	627,856	593,089	5.86	5,693,311	5,454,464	4.38
International Enplaned Revenue	16,469	14,110	16.72	165,889	152,989	8.43
International Deplaned Revenue	16,971	14,771	14.89	171,339	156,612	9.40
Domestic Enplaned Non-Revenue	12,930	13,383	-3.38	127,127	133,846	-5.02
Domestic Deplaned Non-Revenue	12,363	12,784	-3.29	121,865	128,134	-4.89
International Enplaned Non-Revenue	110	88	25.00	1,247	1,147	8.72
International Deplaned Non-Revenue	152	87	74.71	1,170	965	21.24
Intl Enplaned Pre-Cleared Revenue	4,302	1,717	150.55	32,249	16,677	93.37
Intl Deplaned Pre-Cleared Revenue	4,255	1,983	114.57	31,788	17,822	78.36
Intl Enplaned Pre-Cleared Non-Revenue	68	29	134.48	397	283	40.28
Intl Deplaned Pre-Cleared Non-Revenue	50	27	85.19	401	307	30.62
South Terminal Domestic Enplaned Revenue	48,153	6,251	670.32	402,524	122,289	229.16
South Terminal Domestic Deplaned Revenue	48,110	6,228	672.48	403,718	122,913	228.46
South Terminal Domestic Enplaned Non-Revenue	175	8	2,087.50	1,321	47	2,710.64
South Terminal Domestic Deplaned Non-Revenue	183	8	2,187.50	1,636	66	2,378.79
ABIA Passenger Totals	1,413,710	1,249,777	13.12	12,848,203	11,761,440	9.24
<i>ABIA Enplaned Passenger Totals</i>	<i>703,770</i>	<i>620,800</i>	<i>13.37</i>	<i>6,422,975</i>	<i>5,880,157</i>	<i>9.23</i>
<i>ABIA Deplaned Passenger Totals</i>	<i>709,940</i>	<i>628,977</i>	<i>12.87</i>	<i>6,425,228</i>	<i>5,881,283</i>	<i>9.25</i>
<i>ABIA Domestic Passenger Totals</i>	<i>1,371,333</i>	<i>1,216,965</i>	<i>12.68</i>	<i>12,443,723</i>	<i>11,414,638</i>	<i>9.02</i>
<i>ABIA International Passenger Totals</i>	<i>42,377</i>	<i>32,812</i>	<i>29.15</i>	<i>404,480</i>	<i>346,802</i>	<i>16.63</i>
CURRENT PASSENGER RECORD = 1,643,016 RECORD SET = JULY 2019						
Total Aircraft Operations						
Air Carrier	11,829	11,128	6.30	105,756	100,658	5.06
Commuter & Air Taxi	1,360	1,555	-12.54	11,709	12,878	-9.08
Military	444	679	-34.61	6,671	7,730	-13.70
General Aviation						
Itinerant	3,881	3,466	11.97	31,180	35,216	-11.46
Local	48	34	41.18	556	1,187	-53.16
Total G.A.	3,929	3,500	12.26	31,736	36,403	-12.82
Total Operations	17,562	16,862	4.15	155,872	157,669	-1.14

**Austin-Bergstrom International Airport
Aviation Activity Report
Calendar Year 2019 vs 2018**

By Terminal

	9/2019	9/2018	Percent Change	1/2019 - 9/2019	1/2018 - 9/2018	Percent Change
<u>Barbara Jordan Terminal (BJT)</u>						
Passenger Activity						
Domestic Enplaned Revenue	621,563	585,214	6.21	5,692,221	5,452,879	4.39
Domestic Deplaned Revenue	627,856	593,089	5.86	5,693,311	5,454,464	4.38
International Enplaned Revenue	16,469	14,110	16.72	165,889	152,989	8.43
International Deplaned Revenue	16,971	14,771	14.89	171,339	156,612	9.40
Domestic Enplaned Non-Revenue	12,930	13,383	-3.38	127,127	133,846	-5.02
Domestic Deplaned Non-Revenue	12,363	12,784	-3.29	121,865	128,134	-4.89
International Enplaned Non-Revenue	110	88	25.00	1,247	1,147	8.72
International Deplaned Non-Revenue	152	87	74.71	1,170	965	21.24
Intl Enplaned Pre-Cleared Revenue	4,302	1,717	150.55	32,249	16,677	93.37
Intl Deplaned Pre-Cleared Revenue	4,255	1,983	114.57	31,788	17,822	78.36
Intl Enplaned Pre-Cleared Non-Revenue	68	29	134.48	397	283	40.28
Intl Deplaned Pre-Cleared Non-Revenue	50	27	85.19	401	307	30.62
Barbara Jordan Terminal Passenger Totals	1,317,089	1,237,282	6.45	12,039,004	11,516,125	4.54
<i>BJT Enplaned Passenger Totals</i>	<i>655,442</i>	<i>614,541</i>	<i>6.66</i>	<i>6,019,130</i>	<i>5,757,821</i>	<i>4.54</i>
<i>BJT Deplaned Passenger Totals</i>	<i>661,647</i>	<i>622,741</i>	<i>6.25</i>	<i>6,019,874</i>	<i>5,758,304</i>	<i>4.54</i>
<i>BJT Domestic Passenger Totals</i>	<i>1,274,712</i>	<i>1,204,470</i>	<i>5.83</i>	<i>11,634,524</i>	<i>11,169,323</i>	<i>4.16</i>
<i>BJT International Passenger Totals</i>	<i>42,377</i>	<i>32,812</i>	<i>29.15</i>	<i>404,480</i>	<i>346,802</i>	<i>16.63</i>
<u>South Terminal (ST)</u>						
Passenger Activity						
South Terminal Domestic Enplaned Revenue	48,153	6,251	670.32	402,524	122,289	229.16
South Terminal Domestic Deplaned Revenue	48,110	6,228	672.48	403,718	122,913	228.46
South Terminal Domestic Enplaned Non-Revenue	175	8	2087.50	1,321	47	2710.64
South Terminal Domestic Deplaned Non-Revenue	183	8	2187.50	1,636	66	2378.79
South Terminal Passenger Totals	96,621	12,495	673.28	809,199	245,315	229.86
<i>ST Enplaned Passenger Totals</i>	<i>48,328</i>	<i>6,259</i>	<i>672.14</i>	<i>403,845</i>	<i>122,336</i>	<i>230.11</i>
<i>ST Deplaned Passenger Totals</i>	<i>48,293</i>	<i>6,236</i>	<i>674.42</i>	<i>405,354</i>	<i>122,979</i>	<i>229.61</i>

**Austin-Bergstrom International Airport
Aviation Activity Report
Calendar Year 2019 vs 2018**

	9/2019	9/2018	Percent Change	1/2019 - 9/2019	1/2018 - 9/2018	Percent Change
<u>Total Cargo Activity</u>						
Mail						
Domestic Enplaned Mail	184,833	244,037	-24.26	1,677,211	1,826,699	-8.18
Domestic Deplaned Mail	652,539	390,422	67.14	5,908,977	3,759,693	57.17
International Enplaned Mail	0	0	0.00	0	0	0.00
International Deplaned Mail	0	0	0.00	110,830	0	0.00
South Terminal-Domestic Enplaned Mail	0	0	0.00	0	0	0.00
South Terminal-Domestic Deplaned Mail	0	0	0.00	0	0	0.00
Mail Totals	837,372	634,459	31.98	7,697,018	5,586,392	37.78
Cargo						
Domestic Enplaned Cargo	4,272,612	4,796,176	-10.92	42,839,951	44,377,210	-3.46
Domestic Deplaned Cargo	6,119,153	6,919,186	-11.56	58,922,336	61,572,919	-4.30
International Enplaned Cargo	357,730	442,983	-19.25	3,392,880	5,250,897	-35.38
International Deplaned Cargo	227,370	91,384	148.81	2,554,758	2,125,832	20.18
South Terminal-Domestic Enplaned Cargo	0	0	0.00	0	0	0.00
South Terminal-Domestic Deplaned Cargo	0	0	0.00	0	0	0.00
Cargo Totals	10,976,865	12,249,729	-10.39	107,709,925	113,326,858	-4.96
Belly Freight						
Domestic Enplaned Belly Freight	255,406	303,695	-15.90	2,835,670	2,725,009	4.06
Domestic Deplaned Belly Freight	392,292	503,569	-22.10	4,643,454	4,398,562	5.57
International Enplaned Belly Freight	428,916	283,732	51.17	3,017,467	2,456,181	22.85
International Deplaned Belly Freight	550,958	560,784	-1.75	5,502,184	5,206,613	5.68
South Terminal-Domestic Enplaned Belly Frght	0	0	0.00	0	0	0.00
South Terminal-Domestic Deplaned Belly Frght	0	0	0.00	0	0	0.00
Belly Freight Totals	1,627,572	1,651,780	-1.47	15,998,775	14,786,365	8.20
Cargo Totals (Mail, Cargo, Belly Freight)	13,441,809	14,535,968	-7.53	131,405,718	133,699,615	-1.72
<i>Enplaned Cargo Totals</i>	<i>5,499,497</i>	<i>6,070,623</i>	<i>-9.41</i>	<i>53,763,179</i>	<i>56,635,996</i>	<i>-5.07</i>
<i>Deplaned Cargo Totals</i>	<i>7,942,312</i>	<i>8,465,345</i>	<i>-6.18</i>	<i>77,642,539</i>	<i>77,063,619</i>	<i>0.75</i>
<i>Domestic Cargo Totals</i>	<i>11,876,835</i>	<i>13,157,085</i>	<i>-9.73</i>	<i>116,827,599</i>	<i>118,660,092</i>	<i>-1.54</i>
<i>International Cargo Totals</i>	<i>1,564,974</i>	<i>1,378,883</i>	<i>13.50</i>	<i>14,578,119</i>	<i>15,039,523</i>	<i>-3.07</i>

CURRENT CARGO RECORD = 40,215,518

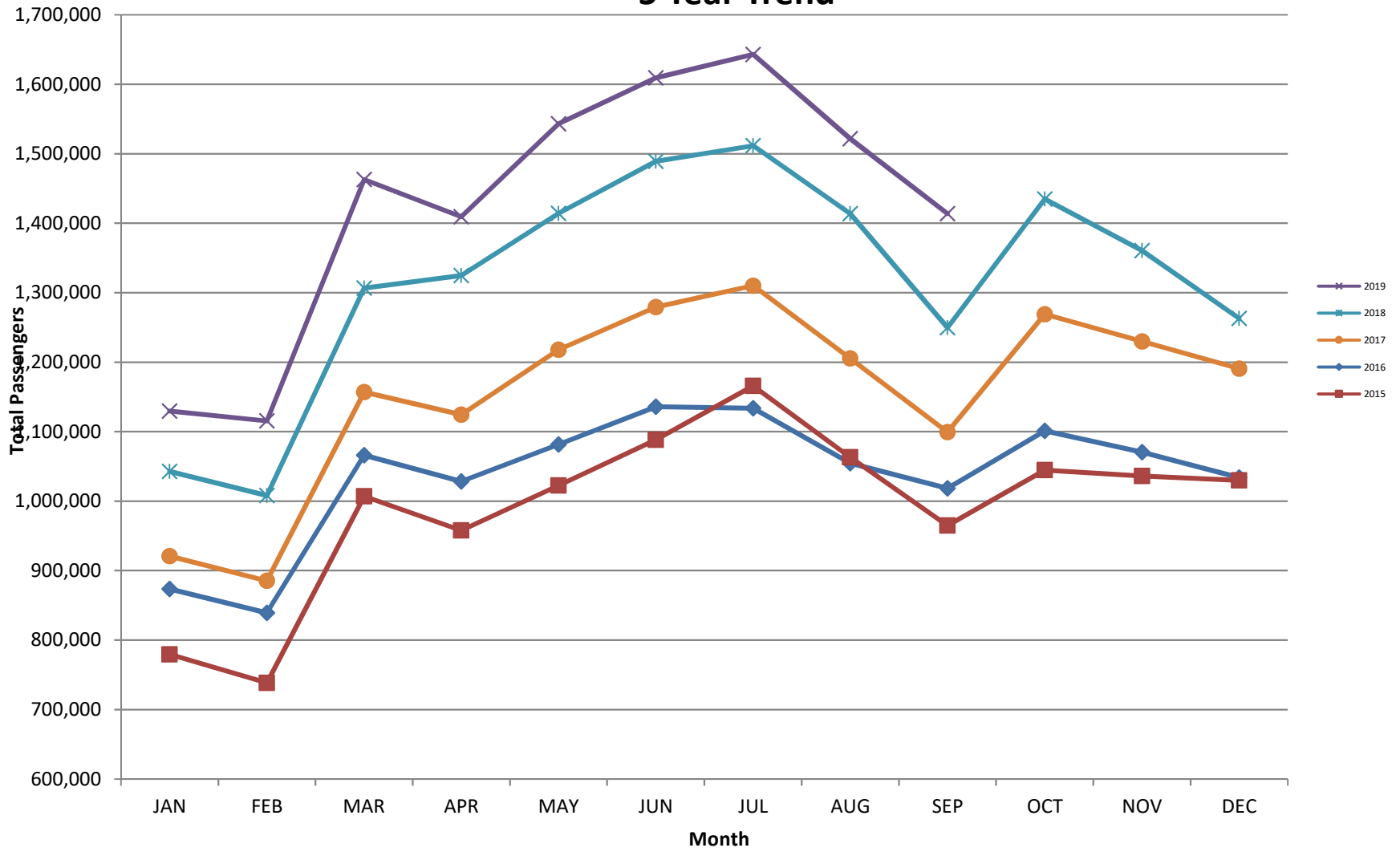
RECORD SET = MARCH 2001

AUS – Airline Codes
September 2019

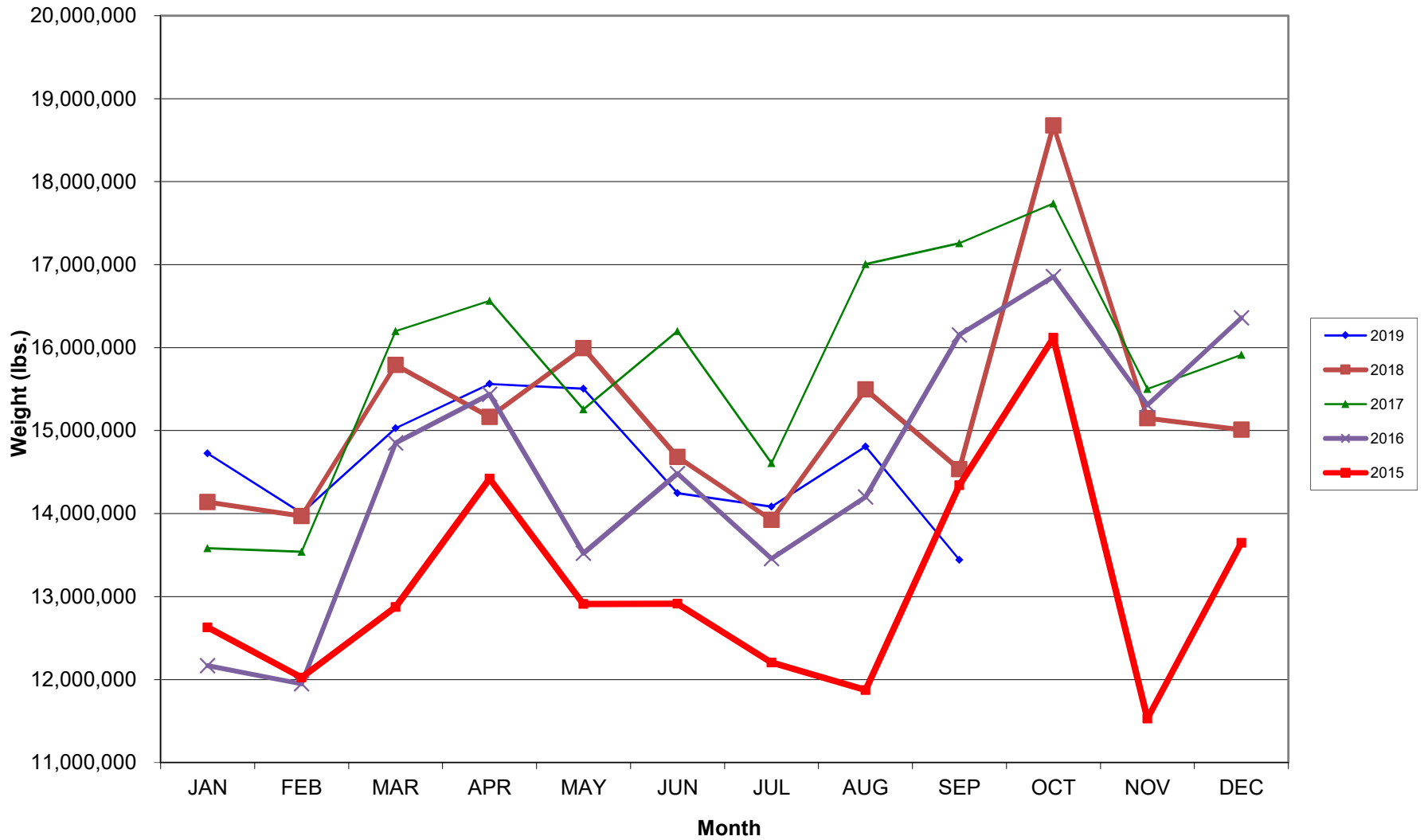
<u>Code</u>	<u>Carrier</u>
AM	Aerovias de Mexico S.A. de C.V. dba AeroMexico Airlines
AC	Air Canada
AS	Alaska Airlines, Inc.
G4	Allegiant Air, LLC
AA	American Airlines, Inc.
BA	British Airways Plc
DL	Delta Airlines
LH	Deutsche Lufthansa AG
F9	Frontier Airlines
B6	JetBlue Airways Corp.
DY	Norwegian Air UK LTD
WN	Southwest Airlines
NK	Spirit Airlines
SY	Sun Country Airlines
WQ	Swift Air, LLC
UA	United Airlines, Inc.
WS	WestJet Airlines

AUSTIN PASSENGER TRAFFIC

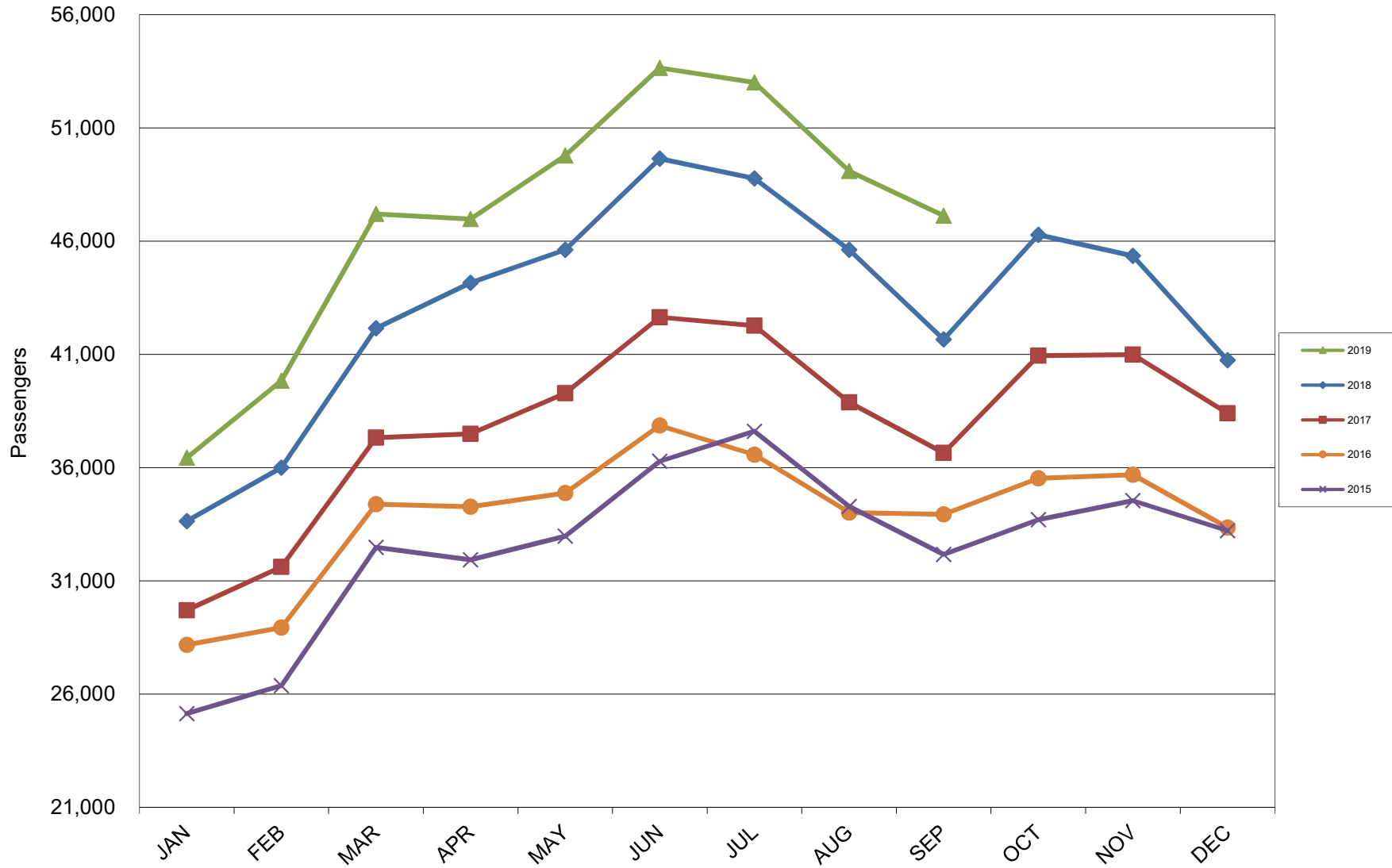
5 Year Trend



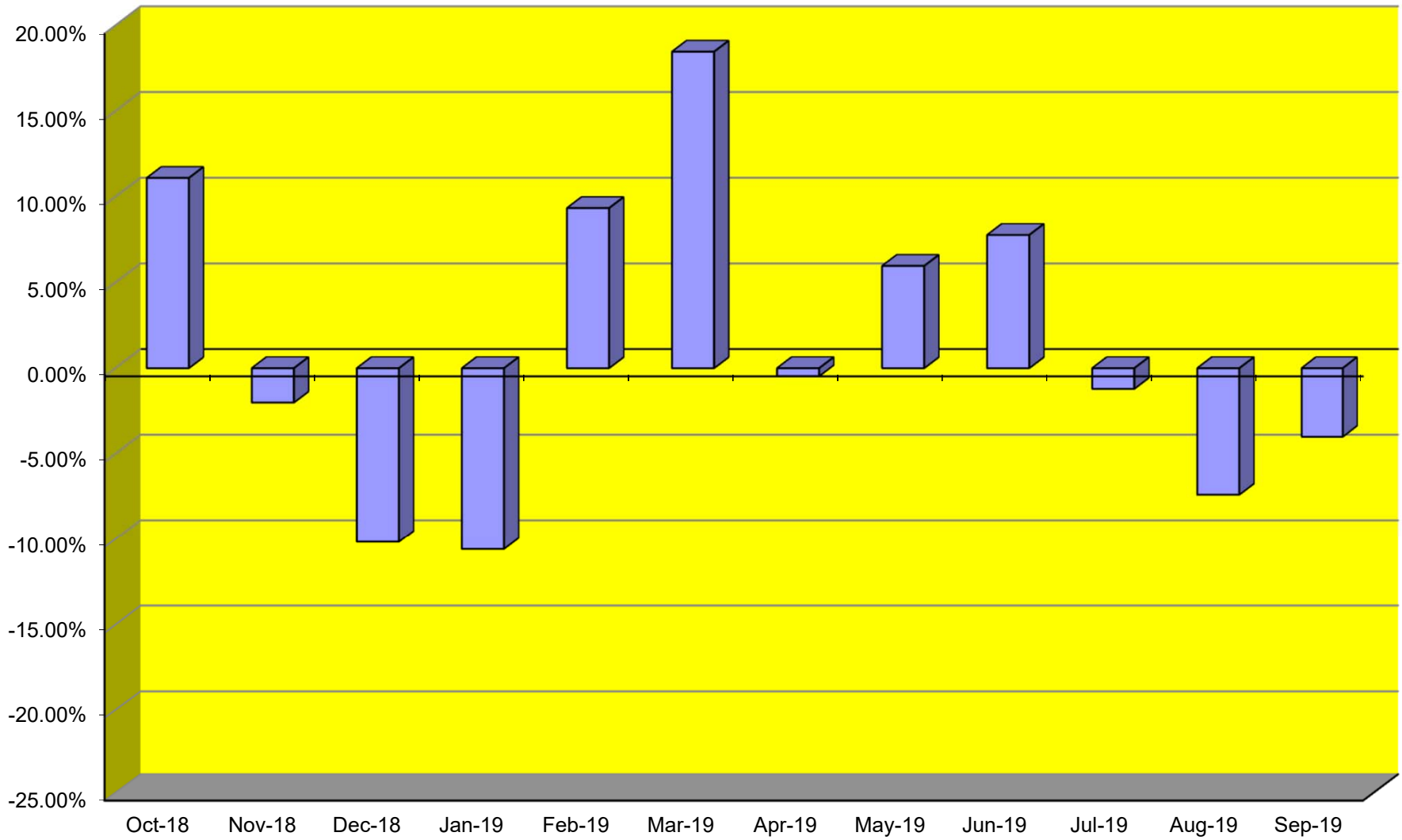
TOTAL CARGO POUNDAGE - AUSTIN, TEXAS



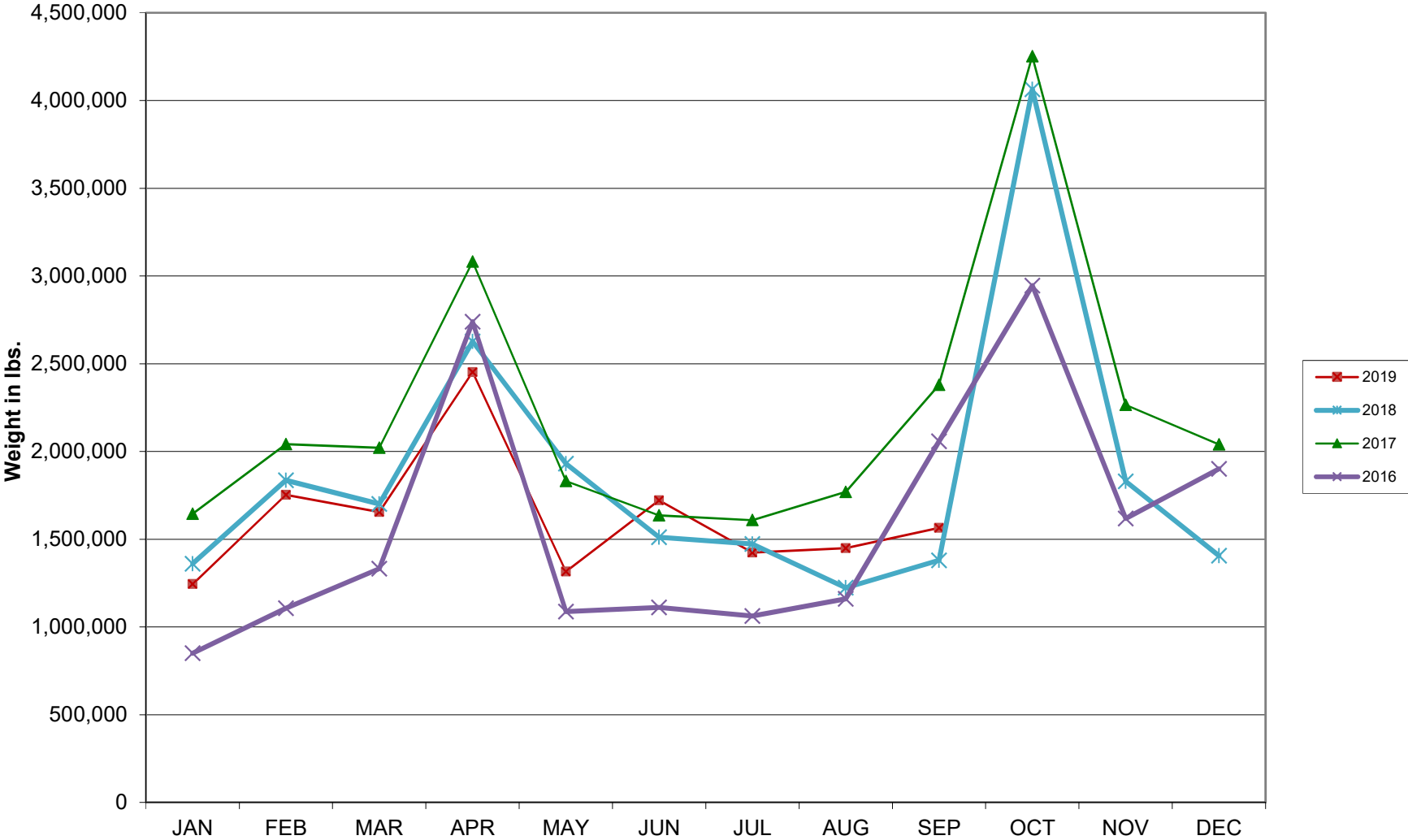
Average Daily Passengers



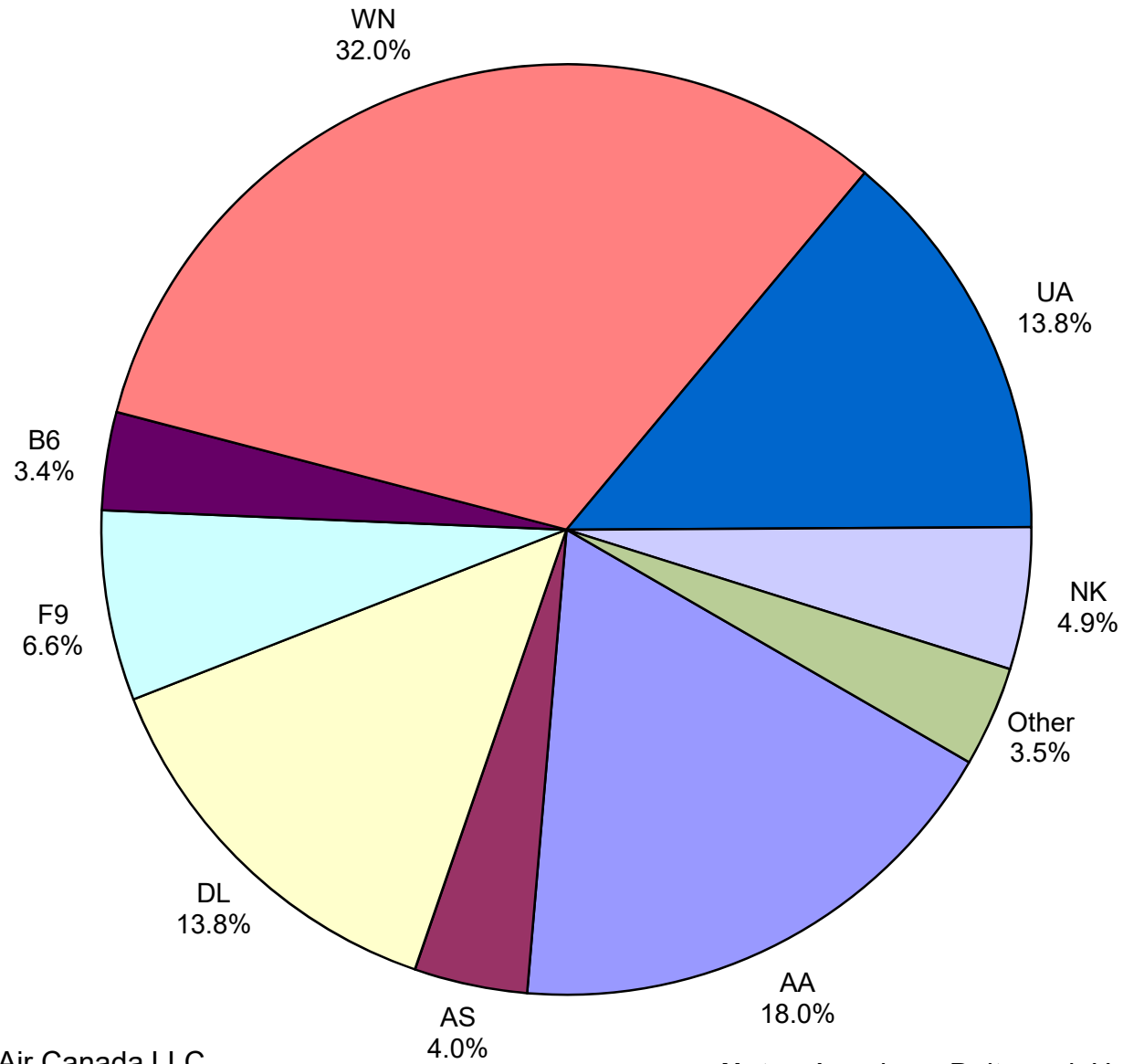
Monthly % Change in Average Daily Passengers



HISTORY OF INTERNATIONAL AIR CARGO



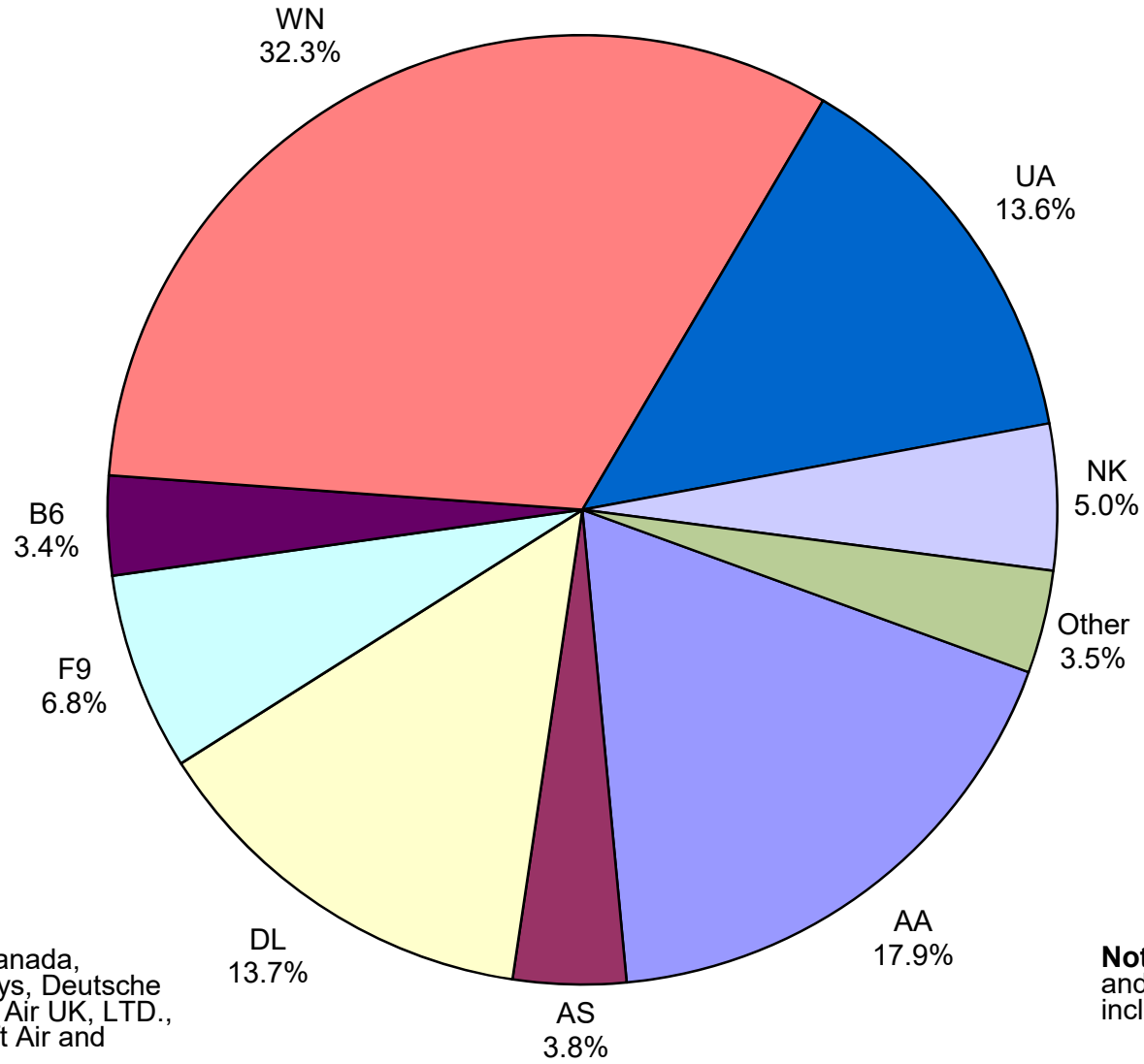
Total Passengers September 2019



Other: Aeromexico, Air Canada LLC, Allegiant Air, British Airways, Deutsche Lufthansa AG, Norwegian Air UK, LTD, Sun Country, Swift Air and WestJet Airlines

Note: American, Delta and United Airlines percentages include Affiliates.

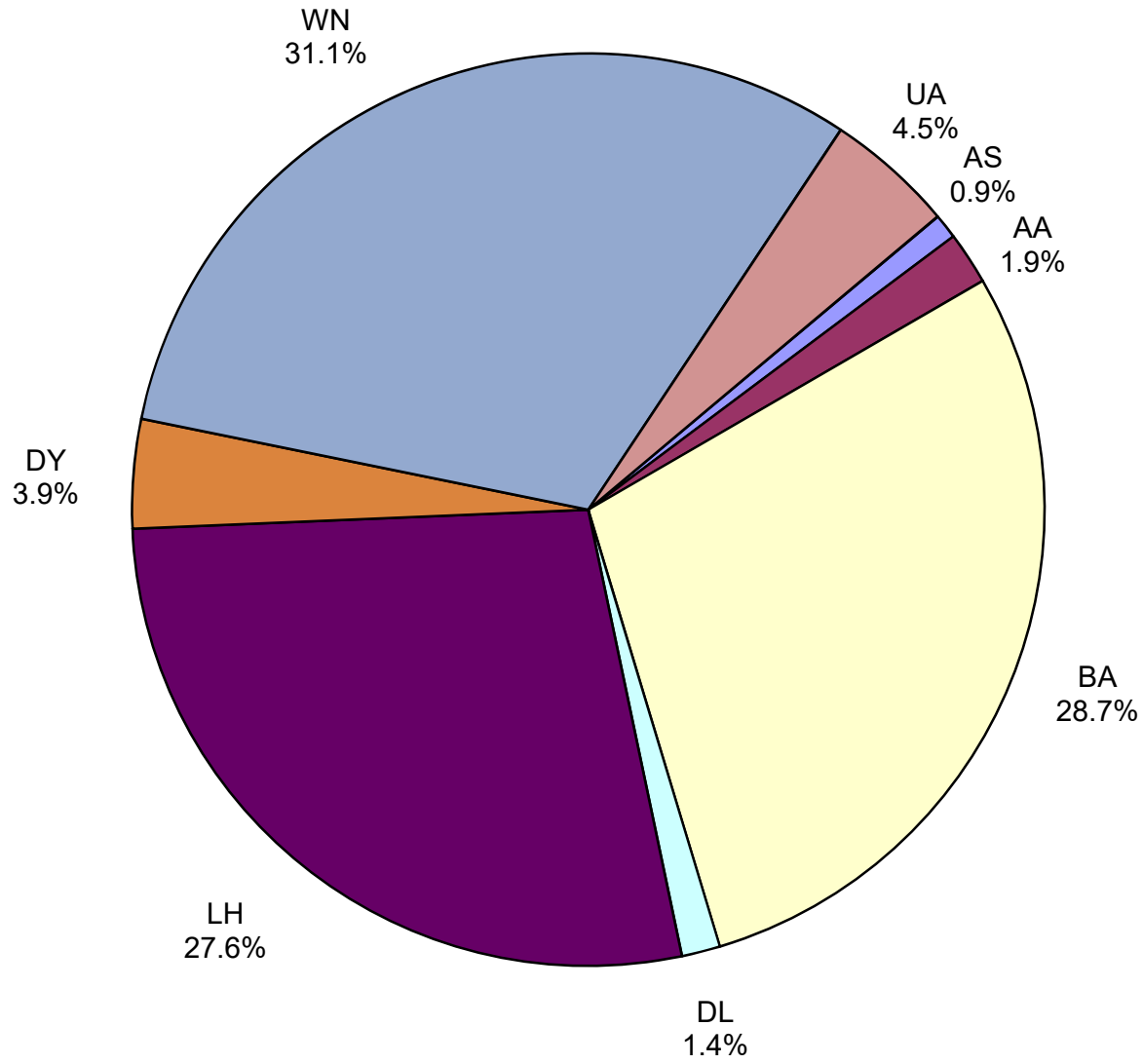
**All Passenger Carriers
Enplaned Revenue Passengers
September 2019**



Other: Aeromexico, Air Canada, Allegiant Air, British Airways, Deutsche Lufthansa AG, Norwegian Air UK, LTD., Sun Country Airlines, Swift Air and WestJet Airlines

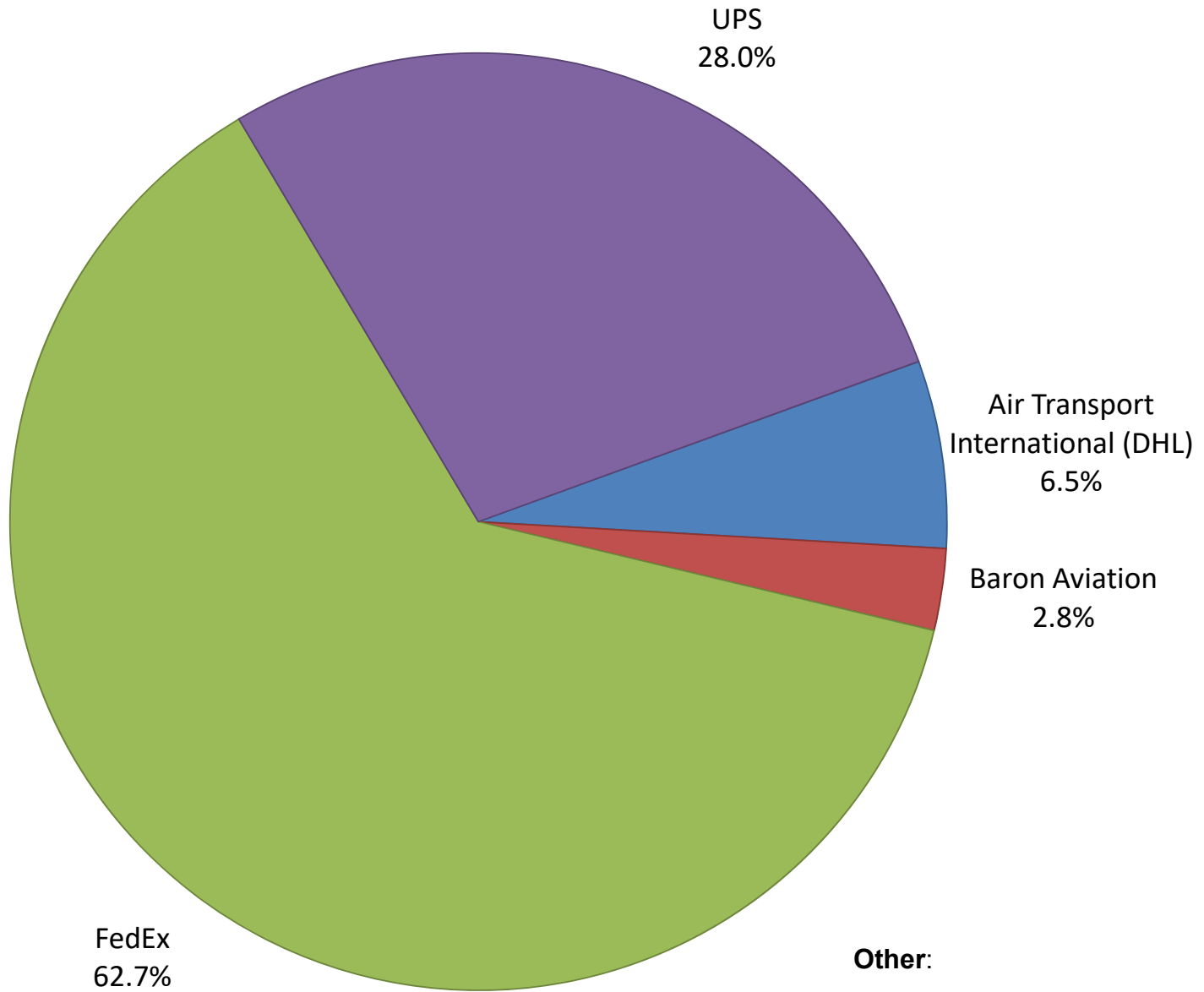
Note: American/US Airways, Delta and United Airlines percentages include Affiliates.

**AUS Belly Freight Market Shares
September 2019**

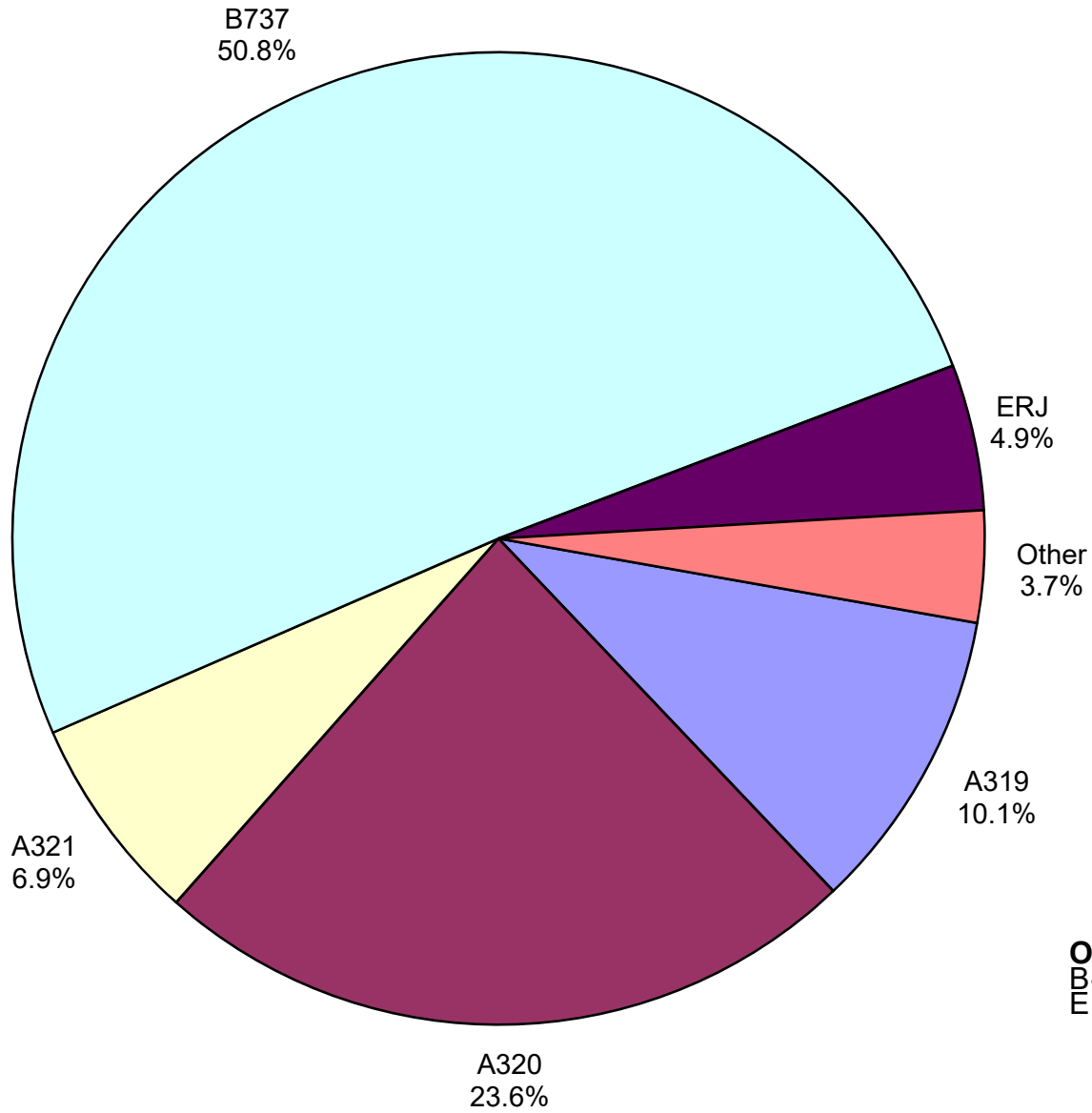


Other =

Air Cargo Market Share September 2019

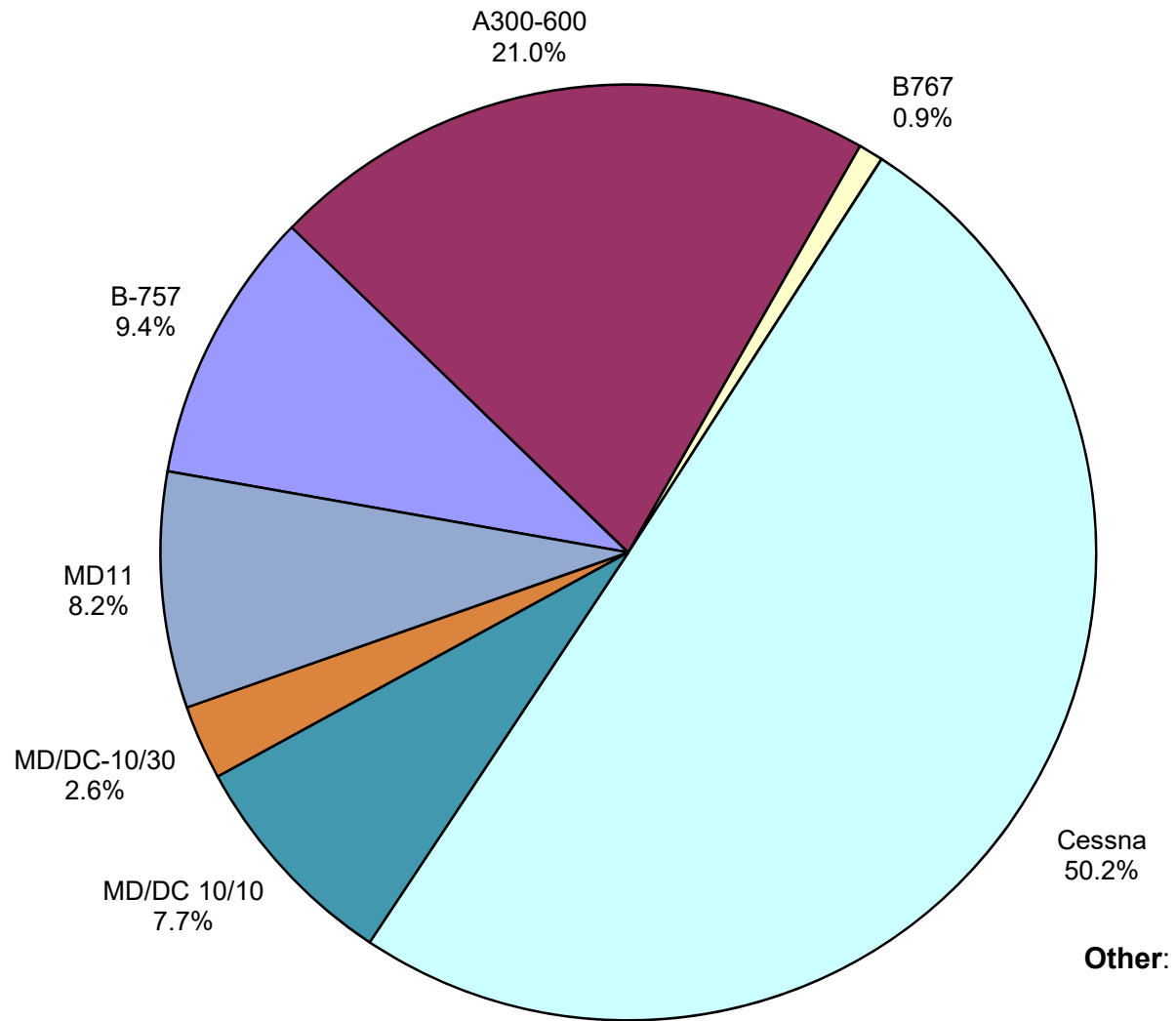


**AUS Scheduled Passenger Aircraft Fleet Mix
September 2019**



Other: A330-300, B-747-400, B-757, B787-900, CRJ and EMB

AUS Scheduled Cargo Aircraft Fleet Mix September 2019



Austin-Bergstrom International Airport

PAX Detail Report - September, 2019

Company	09/2019	09/2018	Period		YTD 2019	YTD 2018	YTD		2019 Share	2018 Share	Share Diff
			Difference	Change			Difference	Change			
ABC Aerolineas S.A. de C.V.	0	0	0	0.0	0	41	-41	-100.0	0.0	0.0	0.0
Aerovías de Mexico S.A. de C.V.	3,477	2,126	1,351	63.5	33,586	32,145	1,441	4.5	0.3	0.3	0.0
Air Canada	6,551	3,756	2,795	74.4	54,218	35,089	19,129	54.5	0.4	0.3	0.1
Air New Zealand	0	0	0	0.0	302	0	302	0.0	0.0	0.0	0.0
Alaska Airlines	55,649	45,405	10,244	22.6	463,607	411,007	52,600	12.8	3.6	3.5	0.1
Allegiant Air	3,123	10,426	-7,303	-70.0	148,476	227,470	-78,994	-34.7	1.2	1.9	-0.8
American Airlines	254,604	221,905	32,699	14.7	2,286,568	2,072,354	214,214	10.3	17.8	17.6	0.2
British Airways	14,629	14,961	-332	-2.2	142,418	128,024	14,394	11.2	1.1	1.1	0.0
Concesionaria Vuela Compañía de Aviación, S.A.P.I. de C.V.	0	1,103	-1,103	-100.0	434	11,972	-11,538	-96.4	0.0	0.1	-0.1
Condor Airlines	0	3,170	-3,170	-100.0	0	18,876	-18,876	-100.0	0.0	0.2	-0.2
Delta Air Lines	194,762	167,079	27,683	16.6	1,757,379	1,575,529	181,850	11.5	13.7	13.4	0.3
Deutsche Lufthansa AG	8,139	0	8,139	0.0	42,405	0	42,405	0.0	0.3	0.0	0.3
Frontier Airlines	93,498	112,888	-19,390	-17.2	657,505	857,778	-200,273	-23.3	5.1	7.3	-2.2
JetBlue Airways	48,033	42,330	5,703	13.5	425,125	443,336	-18,211	-4.1	3.3	3.8	-0.5
Miami Air International	0	0	0	0.0	869	309	560	181.2	0.0	0.0	0.0
Norwegian Air UK LTD	7,450	7,480	-30	-0.4	55,600	47,272	8,328	17.6	0.4	0.4	0.0
Scandinavian Airlines	0	0	0	0.0	423	697	-274	-39.3	0.0	0.0	0.0
Southwest Airlines	452,670	427,629	25,041	5.9	4,350,300	4,116,608	233,692	5.7	33.9	35.0	-1.1
Spirit Airlines	69,734	0	69,734	0.0	541,708	0	541,708	0.0	4.2	0.0	4.2
Sun Country Airlines	3,499	2,254	1,245	55.2	29,188	19,645	9,543	48.6	0.2	0.2	0.1
Swift Air	290	692	-402	-58.1	1,847	1,834	13	0.7	0.0	0.0	0.0
United Airlines	195,478	184,504	10,974	5.9	1,840,660	1,731,997	108,663	6.3	14.3	14.7	-0.4
Vacation Express	0	0	0	0.0	1,750	2,758	-1,008	-36.5	0.0	0.0	0.0
VIA Airlines	0	2,069	-2,069	-100.0	3,218	15,582	-12,364	-79.3	0.0	0.1	-0.1
Virgin America	0	0	0	0.0	0	11,117	-11,117	-100.0	0.0	0.1	-0.1
WestJet	2,124	0	2,124	0.0	10,617	0	10,617	0.0	0.1	0.0	0.1
Report Totals	1,413,710	1,249,777	163,933	13.1%	12,848,203	11,761,440	1,086,763	9.2%			

Statistics Included in Report:

Domestic Passengers:	Enplaned Revenue, Deplaned Revenue, Enplaned Non-Revenue, Deplaned Non-Revenue
International Passengers:	Enplaned Revenue, Deplaned Revenue, Enplaned Non-Revenue, Deplaned Non-Revenue
International Pre-Cleared Passengers:	Enplaned Revenue, Deplaned Revenue, Enplaned Non-Revenue, Deplaned Non-Revenue
South Terminal Domestic Passengers:	Enplaned Revenue, Deplaned Revenue, Enplaned Non-Revenue, Deplaned Non-Revenue

Austin-Bergstrom International Airport

Summary Landing Report

Landing Type: Total

Month	2019		2018		2017		% Change 2019 - 2018		% Change 2018 - 2017	
	Count	Weight	Count	Weight	Count	Weight	Count	Weight	Count	Weight
January	5,348	733,746,679	5,086	688,923,110	4,768	612,688,871	5.15%	6.51%	6.67%	12.44%
February	5,040	692,708,930	4,706	637,500,756	4,357	552,711,639	7.10%	8.66%	8.01%	15.34%
March	5,964	825,483,911	5,643	760,648,260	5,307	685,661,659	5.69%	8.52%	6.33%	10.94%
April	5,899	815,621,798	5,797	793,367,736	5,179	689,402,051	1.76%	2.81%	11.93%	15.08%
May	6,294	881,747,150	6,117	831,431,763	5,529	736,484,083	2.89%	6.05%	10.63%	12.89%
June	6,322	890,410,020	6,211	852,438,818	5,603	752,628,599	1.79%	4.45%	10.85%	13.26%
July	6,551	915,103,306	6,346	869,502,671	5,698	763,088,836	3.23%	5.24%	11.37%	13.95%
August	6,447	906,499,773	6,245	861,046,997	5,490	741,110,019	3.23%	5.28%	13.75%	16.18%
September	6,020	848,899,951	5,737	790,731,351	5,046	679,381,339	4.93%	7.36%	13.69%	16.39%
October			6,078	846,310,860	5,448	743,973,610			11.56%	13.76%
November			5,684	780,994,101	5,289	718,179,948			7.47%	8.75%
December			5,600	761,317,385	5,442	737,424,963			2.90%	3.24%
Totals for Selected Period	53,885	7,510,221,518	51,888	7,085,591,462	46,977	6,213,157,096	3.85%	5.99%	10.45%	14.04%
Yearly Totals	53,885	7,510,221,518	69,250	9,474,213,808	63,156	8,412,735,617			9.65%	12.62%