

**Austin-Bergstrom International Airport
Aviation Activity Report
Calendar Year 2021 vs 2020**

Combined Terminals

	7/2021	7/2020	Percent Change	1/2021 - 7/2021	1/2020 - 7/2020	Percent Change
ABIA						
Total Passenger Activity						
Domestic Enplaned Revenue	715,536	187,837	280.93%	2,970,500	1,851,211	60.46%
Domestic Deplaned Revenue	708,482	178,486	296.94%	2,923,723	1,857,369	57.41%
International Enplaned Revenue	15,516	1,182	1,212.69%	43,680	31,999	36.50%
International Deplaned Revenue	16,249	857	1,796.03%	43,660	34,858	25.25%
Domestic Enplaned Non-Revenue	13,855	6,123	126.28%	70,333	60,770	15.74%
Domestic Deplaned Non-Revenue	13,306	5,715	132.83%	67,689	56,721	19.34%
International Enplaned Non-Revenue	62	12	416.67%	225	493	-54.36%
International Deplaned Non-Revenue	46	14	228.57%	131	423	-69.03%
Intl Enplaned Pre-Cleared Revenue	0	0	0.00%	0	5,483	-100.00%
Intl Deplaned Pre-Cleared Revenue	0	0	0.00%	0	4,626	-100.00%
Intl Enplaned Pre-Cleared Non-Revenue	0	0	0.00%	0	108	-100.00%
Intl Deplaned Pre-Cleared Non-Revenue	0	0	0.00%	0	100	-100.00%
South Terminal Domestic Enplaned Revenue	29,229	13,351	118.93%	117,775	97,914	20.28%
South Terminal Domestic Deplaned Revenue	28,829	12,424	132.04%	115,201	99,825	15.40%
South Terminal Domestic Enplaned Non-Revenue	95	34	179.41%	477	483	-1.24%
South Terminal Domestic Deplaned Non-Revenue	100	30	233.33%	498	464	7.33%
ABIA Passenger Totals	1,541,305	406,065	279.57%	6,353,892	4,102,847	54.87%
<i>ABIA Enplaned Passenger Totals</i>	<i>774,293</i>	<i>208,539</i>	<i>271.29%</i>	<i>3,202,990</i>	<i>2,048,461</i>	<i>56.36%</i>
<i>ABIA Deplaned Passenger Totals</i>	<i>767,012</i>	<i>197,526</i>	<i>288.31%</i>	<i>3,150,902</i>	<i>2,054,386</i>	<i>53.37%</i>
<i>ABIA Domestic Passenger Totals</i>	<i>1,509,432</i>	<i>404,000</i>	<i>273.62%</i>	<i>6,266,196</i>	<i>4,024,757</i>	<i>55.69%</i>
<i>ABIA International Passenger Totals</i>	<i>31,873</i>	<i>2,065</i>	<i>1443.49%</i>	<i>87,696</i>	<i>78,090</i>	<i>12.30%</i>

CURRENT PASSENGER RECORD = 1,643,016 RECORD SET = JULY 2019

Total Aircraft Operations

Air Carrier	12,761	6,466	97.36%	60,247	49,309	22.18%
Commuter & Air Taxi	1,676	1,203	39.32%	11,693	7,077	65.23%
Military	504	434	16.13%	3,180	2,710	17.34%
General Aviation						
Itinerant	3,689	2,961	24.59%	24,467	18,337	33.43%
Local	6	0	0.00%	32	268	-88.06%
Total G.A.	3,695	2,961	24.79%	24,499	18,605	31.68%
Total Operations	18,636	11,064	68.44%	99,619	77,701	28.21%

**Austin-Bergstrom International Airport
Aviation Activity Report
Calendar Year 2021 vs 2020**

By Terminal

	7/2021	7/2020	Percent Change	1/2021 - 7/2021	1/2020 - 7/2020	Percent Change
<u>Barbara Jordan Terminal (BJT)</u>						
Passenger Activity						
Domestic Enplaned Revenue	715,536	187,837	280.93%	2,970,500	1,851,211	60.46%
Domestic Deplaned Revenue	708,482	178,486	296.94%	2,923,723	1,857,369	36.50%
International Enplaned Revenue	15,516	1,182	1212.69%	43,680	31,999	25.25%
International Deplaned Revenue	16,249	857	1796.03%	43,660	34,858	25.25%
Domestic Enplaned Non-Revenue	13,855	6,123	126.28%	70,333	60,770	15.74%
Domestic Deplaned Non-Revenue	13,306	5,715	132.83%	67,689	56,721	19.34%
International Enplaned Non-Revenue	62	12	416.67%	225	493	-54.36%
International Deplaned Non-Revenue	46	14	228.57%	131	423	-69.03%
Intl Enplaned Pre-Cleared Revenue	0	0	0.00%	0	5,483	-100.00%
Intl Deplaned Pre-Cleared Revenue	0	0	0.00%	0	4,626	-100.00%
Intl Enplaned Pre-Cleared Non-Revenue	0	0	0.00%	0	108	-100.00%
Intl Deplaned Pre-Cleared Non-Revenue	0	0	0.00%	0	100	-100.00%
Barbara Jordan Terminal Passenger Totals	1,483,052	380,226	290.04%	6,119,941	3,904,161	56.75%
<i>BJT Enplaned Passenger Totals</i>	<i>744,969</i>	<i>195,154</i>	<i>281.73%</i>	<i>3,084,738</i>	<i>1,950,064</i>	<i>58.19%</i>
<i>BJT Deplaned Passenger Totals</i>	<i>738,083</i>	<i>185,072</i>	<i>298.81%</i>	<i>3,035,203</i>	<i>1,954,097</i>	<i>55.33%</i>
<i>BJT Domestic Passenger Totals</i>	<i>1,451,179</i>	<i>378,161</i>	<i>283.75%</i>	<i>6,032,245</i>	<i>3,826,071</i>	<i>57.66%</i>
<i>BJT International Passenger Totals</i>	<i>31,873</i>	<i>2,065</i>	<i>1443.49%</i>	<i>87,696</i>	<i>78,090</i>	<i>12.30%</i>
<u>South Terminal (ST)</u>						
Passenger Activity						
South Terminal Domestic Enplaned Revenue	29,229	13,351	118.93%	117,775	97,914	20.28%
South Terminal Domestic Deplaned Revenue	28,829	12,424	132.04%	115,201	99,825	15.40%
South Terminal Domestic Enplaned Non-Revenue	95	34	179.41%	477	483	-1.24%
South Terminal Domestic Deplaned Non-Revenue	100	30	233.33%	498	464	7.33%
South Terminal Passenger Totals	58,253	25,839	125.45%	233,951	198,686	17.75%
<i>ST Enplaned Passenger Totals</i>	<i>29,324</i>	<i>13,385</i>	<i>119.08%</i>	<i>118,252</i>	<i>98,397</i>	<i>20.18%</i>
<i>ST Deplaned Passenger Totals</i>	<i>28,929</i>	<i>12,454</i>	<i>132.29%</i>	<i>115,699</i>	<i>100,289</i>	<i>15.37%</i>

**Austin-Bergstrom International Airport
Aviation Activity Report
Calendar Year 2021 vs 2020**

	7/2021	7/2020	Percent Change	1/2021 - 7/2021	1/2020 - 7/2020	Percent Change
<u>Total Cargo Activity</u>						
Mail						
Domestic Enplaned Mail	115,160	160,380	-28.20%	906,915	1,184,113	-23.41%
Domestic Deplaned Mail	593,810	401,020	48.07%	3,556,455	3,025,365	17.55%
International Enplaned Mail	0	0	0.00%	0	0	0.00%
International Deplaned Mail	0	0	0.00%	0	0	0.00%
South Terminal-Domestic Enplaned Mail	0	0	0.00%	0	0	0.00%
South Terminal-Domestic Deplaned Mail	0	0	0.00%	0	0	0.00%
Mail Totals	708,970	561,400	26.29%	4,463,370	4,209,478	6.03%
Cargo						
Domestic Enplaned Cargo	6,899,317	7,252,651	-4.87%	50,542,989	38,206,352	32.29%
Domestic Deplaned Cargo	9,055,721	10,923,019	-17.10%	62,980,214	57,436,864	9.65%
International Enplaned Cargo	22,106	16,311	35.53%	131,471	1,039,641	-87.35%
International Deplaned Cargo	9,671	0	0.00%	228,581	518,751	-55.94%
South Terminal-Domestic Enplaned Cargo	0	0	0.00%	0	0	0.00%
South Terminal-Domestic Deplaned Cargo	0	0	0.00%	0	0	0.00%
Cargo Totals	15,986,815	18,191,981	-12.12%	113,883,255	97,201,608	17.16%
Belly Freight						
Domestic Enplaned Belly Freight	474,328	241,551	96.37%	1,909,583	1,687,125	13.19%
Domestic Deplaned Belly Freight	720,982	333,661	116.08%	3,388,131	2,571,980	31.73%
International Enplaned Belly Freight	0	1,319	-100.00%	0	1,035,039	-100.00%
International Deplaned Belly Freight	0	0	0.00%	0	2,056,175	-100.00%
South Terminal-Domestic Enplaned Belly Frght	0	0	0.00%	0	0	0.00%
South Terminal-Domestic Deplaned Belly Frght	0	0	0.00%	0	0	0.00%
Belly Freight Totals	1,195,310	576,531	107.33%	5,297,714	7,350,319	-27.93%
Cargo Totals (Mail, Cargo, Belly Freight)	17,891,095	19,329,912	-7.44%	123,644,339	108,761,405	13.68%
<i>Enplaned Cargo Totals</i>	<i>7,510,911</i>	<i>7,672,212</i>	<i>-2.10%</i>	<i>53,490,958</i>	<i>43,152,270</i>	<i>23.96%</i>
<i>Deplaned Cargo Totals</i>	<i>10,380,184</i>	<i>11,657,700</i>	<i>-10.96%</i>	<i>70,153,381</i>	<i>65,609,135</i>	<i>6.93%</i>
<i>Domestic Cargo Totals</i>	<i>17,859,318</i>	<i>19,312,282</i>	<i>-7.52%</i>	<i>123,284,287</i>	<i>104,111,799</i>	<i>18.42%</i>
<i>International Cargo Totals</i>	<i>31,777</i>	<i>17,630</i>	<i>80.24%</i>	<i>360,052</i>	<i>4,649,606</i>	<i>-92.26%</i>

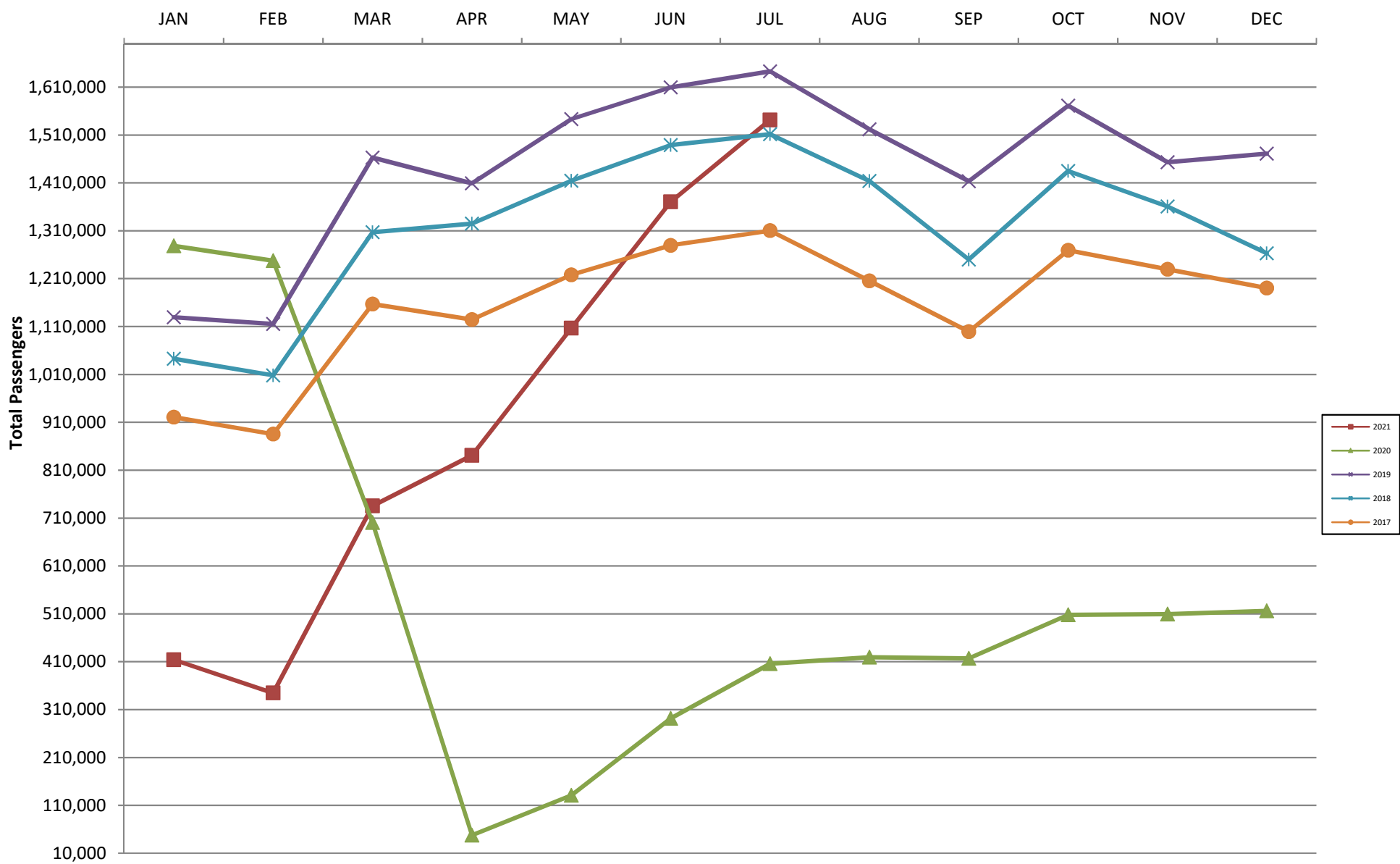
CURRENT CARGO RECORD = 40,215,518

RECORD SET = MARCH 2001

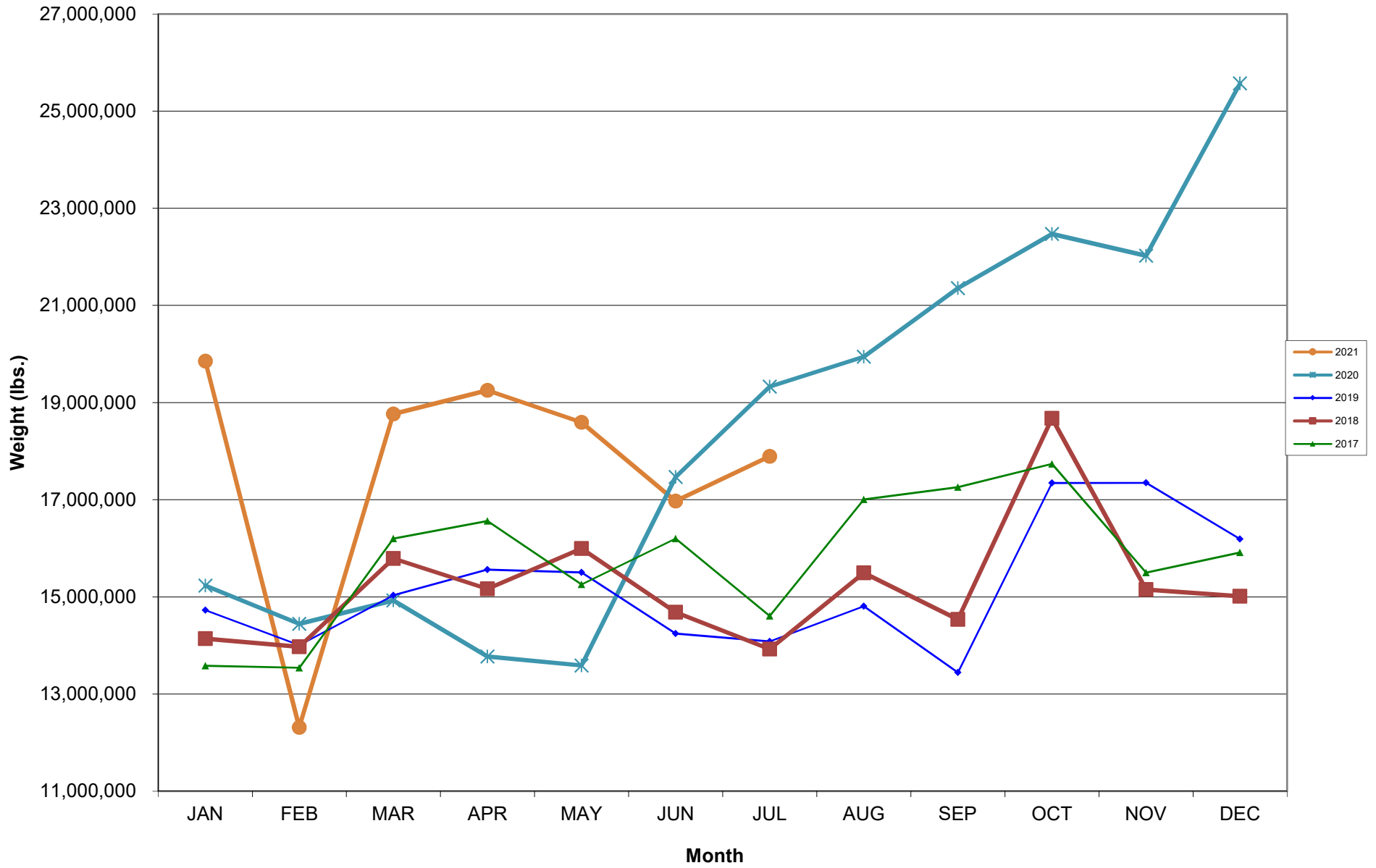
AUS – Airline Codes
July 2021

<u>Code</u>	<u>Carrier</u>
AM	Aerovias de Mexico S.A. de C.V. dba Aeromexico
AS	Alaska Airlines, Inc.
G4	Allegiant Air, LLC
AA	American Airlines, Inc.
DL	Delta Air Lines
F9	Frontier Airlines, Inc.
HA	Hawaiian Airlines, Inc.
B6	JetBlue Airways Corp.
WN	Southwest Airlines
NK	Spirit Airlines, Inc.
SY	Sun Country Airlines/MN Airlines LLC
WQ	Swift Air LLC
UA	United Airlines, Inc.

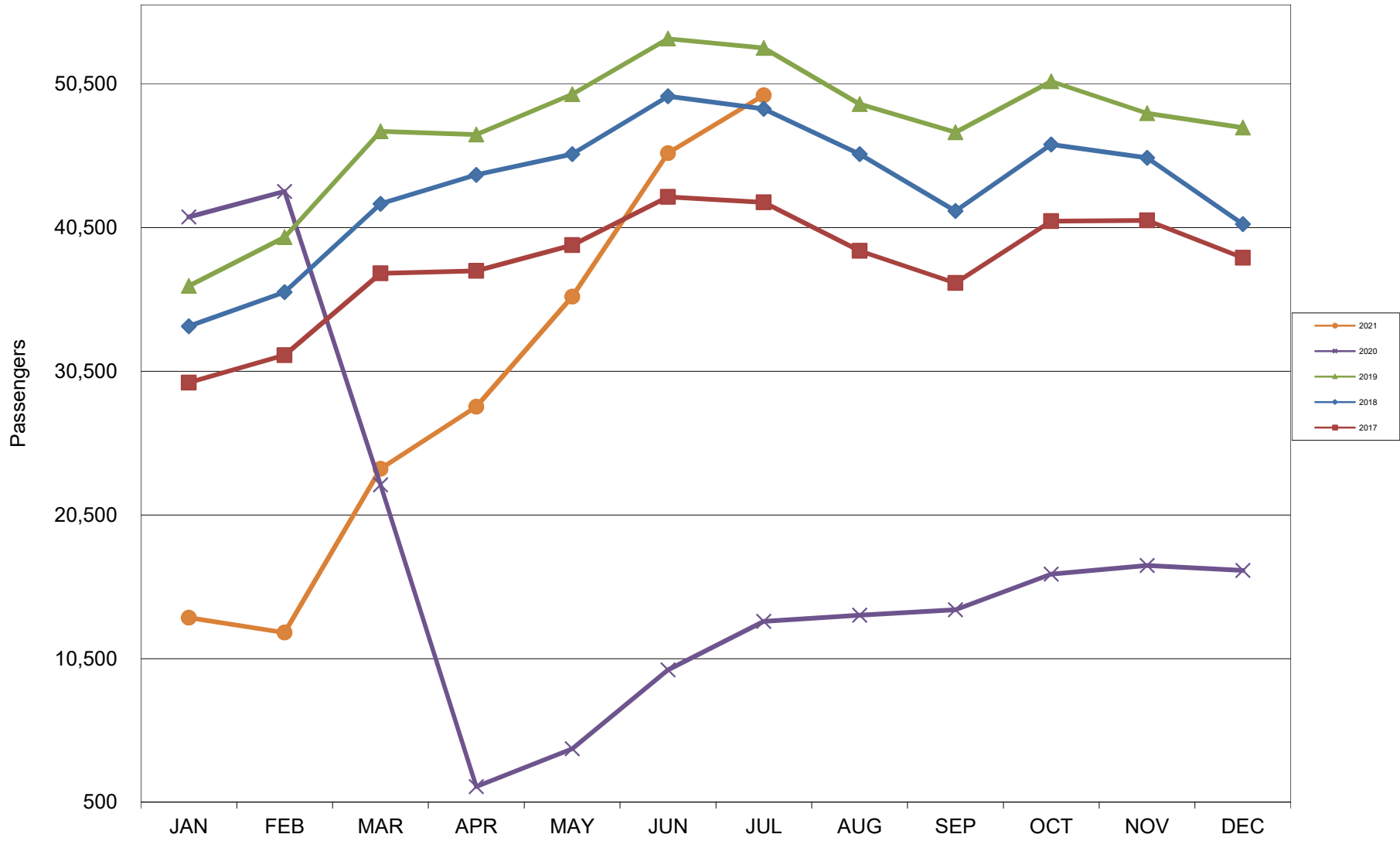
AUSTIN PASSENGER TRAFFIC 5 Year Trend



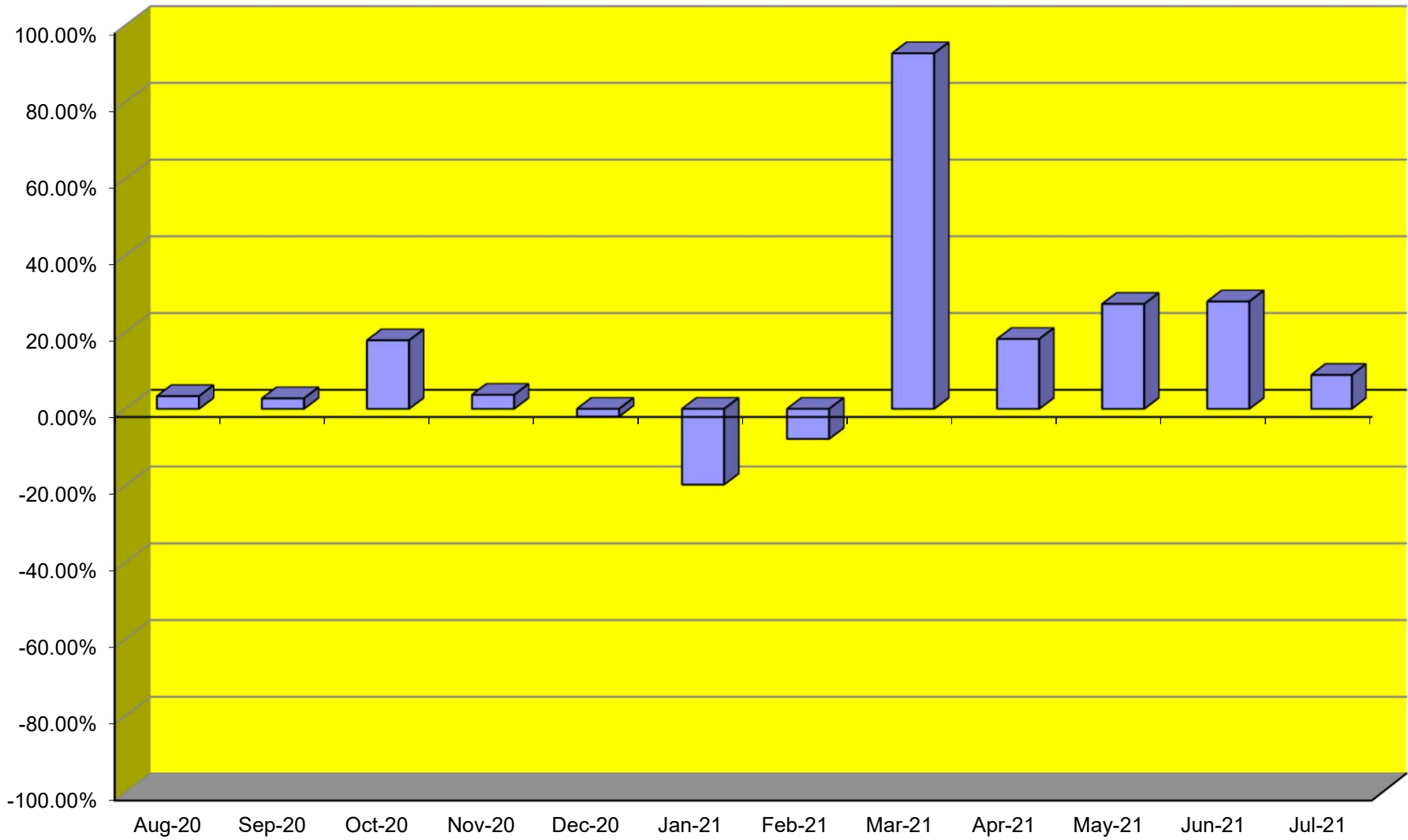
TOTAL CARGO POUNDAGE - AUSTIN, TEXAS



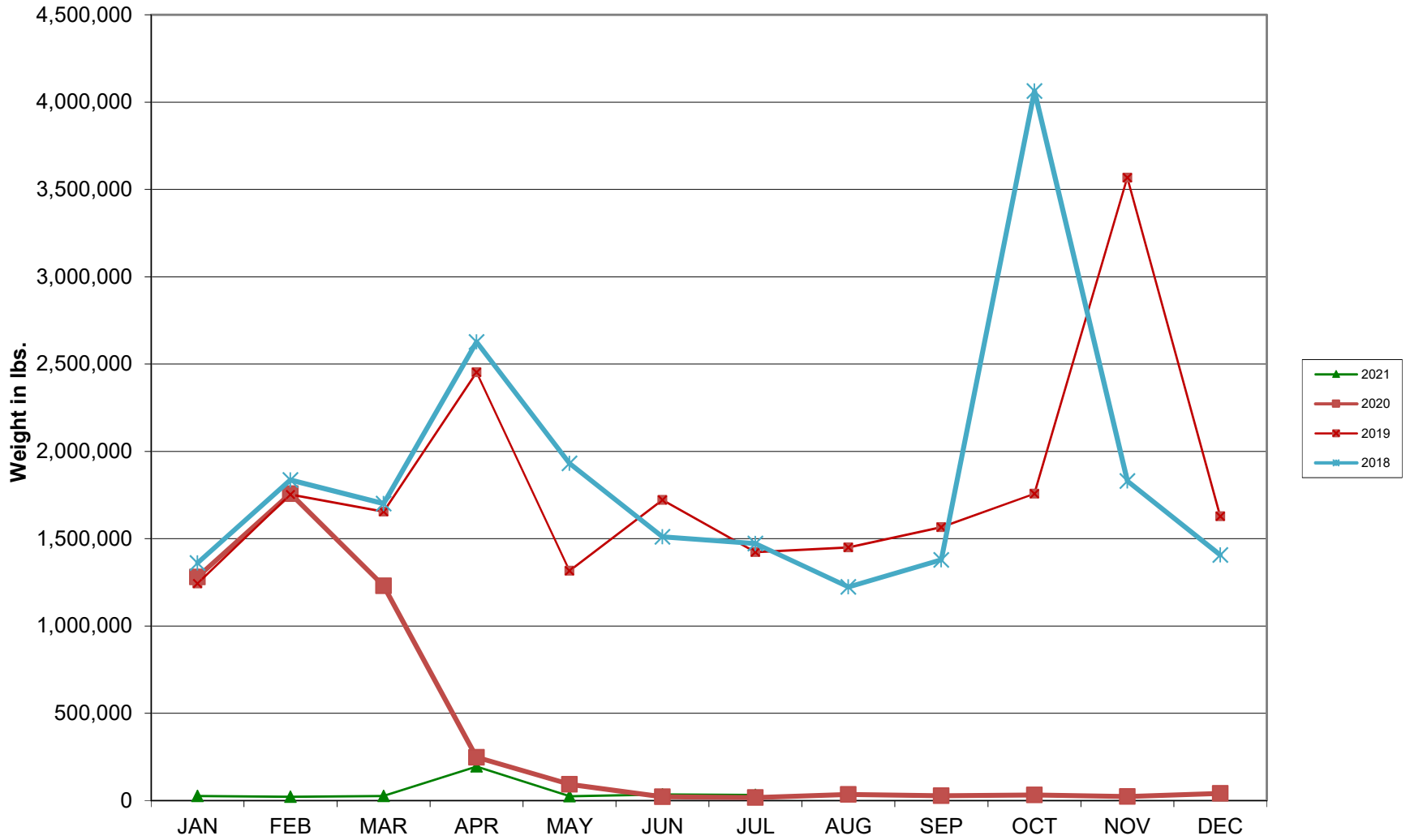
Average Daily Passengers



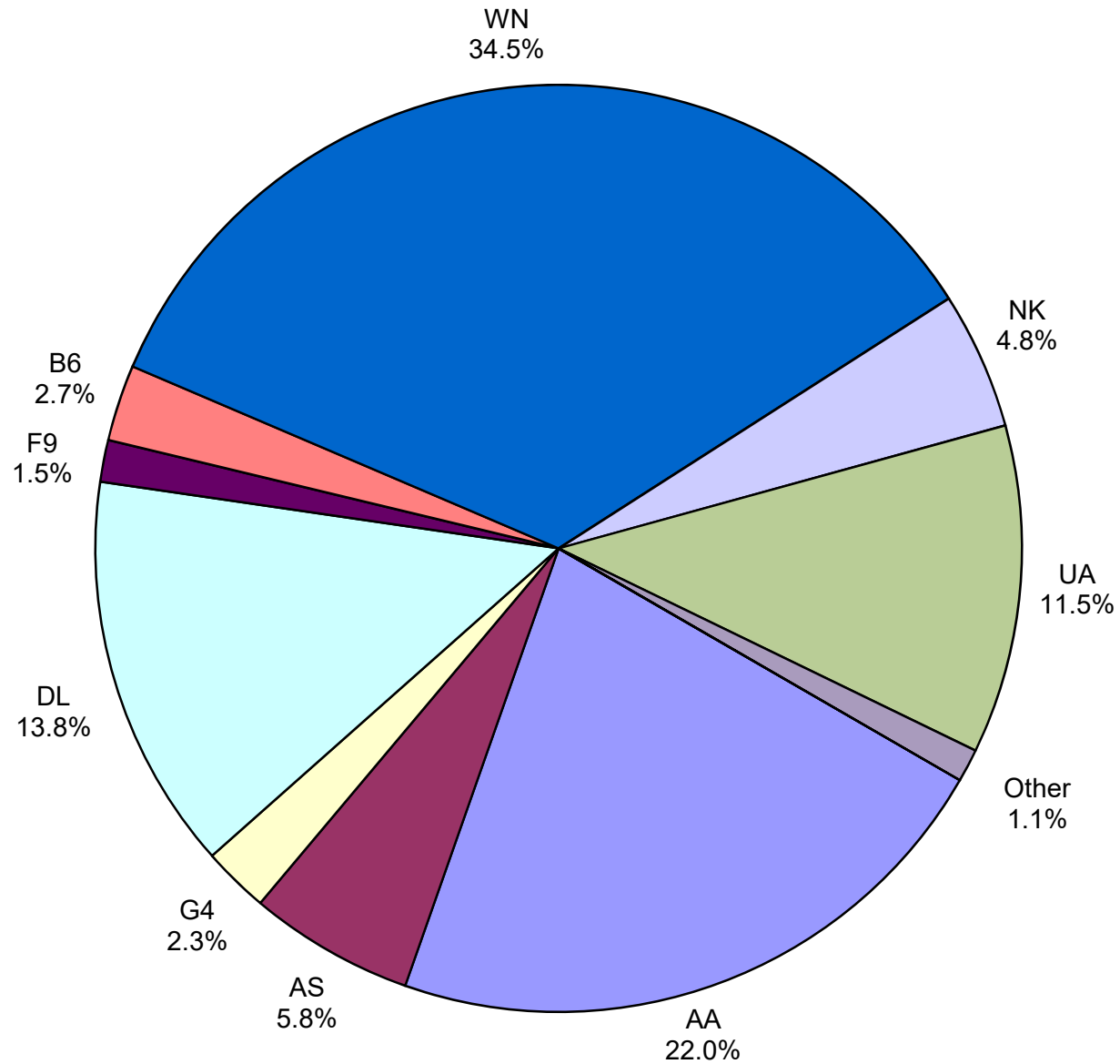
Monthly % Change in Average Daily Passengers



HISTORY OF INTERNATIONAL AIR CARGO



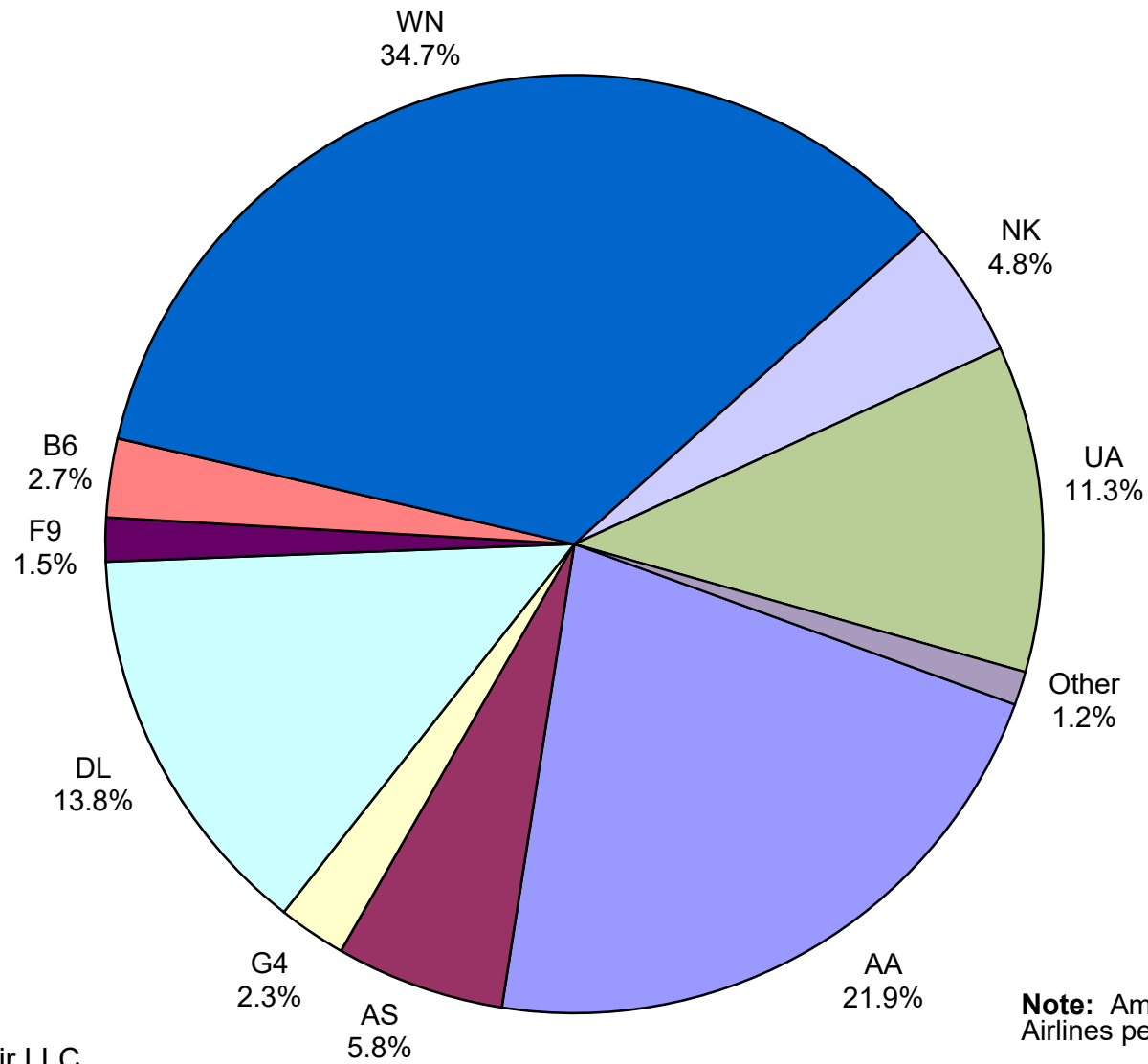
Total Passengers July 2021



Other: Aeromexico, Hawaiian Airlines, Inc., Sun Country and Swift Air LLC

Note: American, Delta and United Airlines percentages include Affiliates.

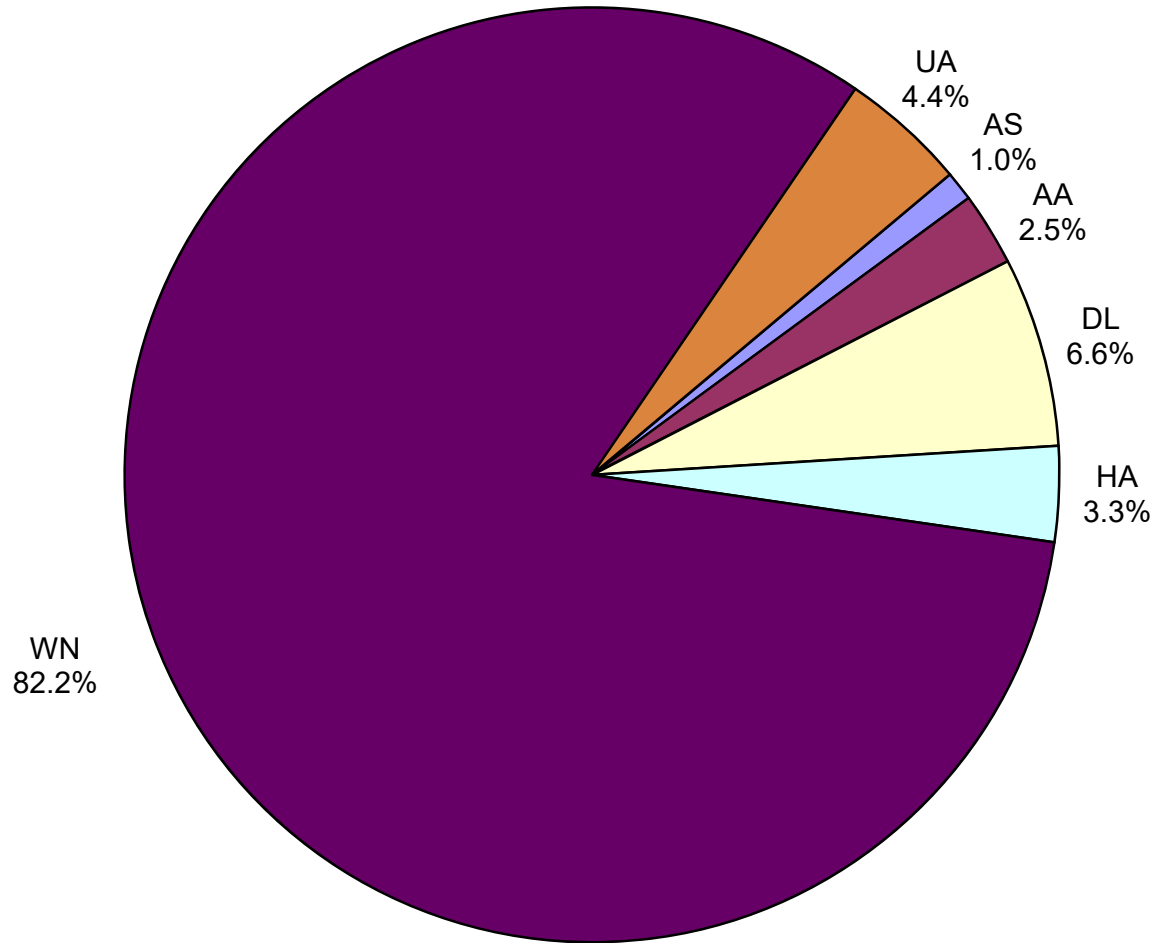
**All Passenger Carriers
Enplaned Revenue Passengers
July 2021**



Other: Aeromexico,
Hawaiian Airlines, Inc.,
Sun Country and Swift Air LLC

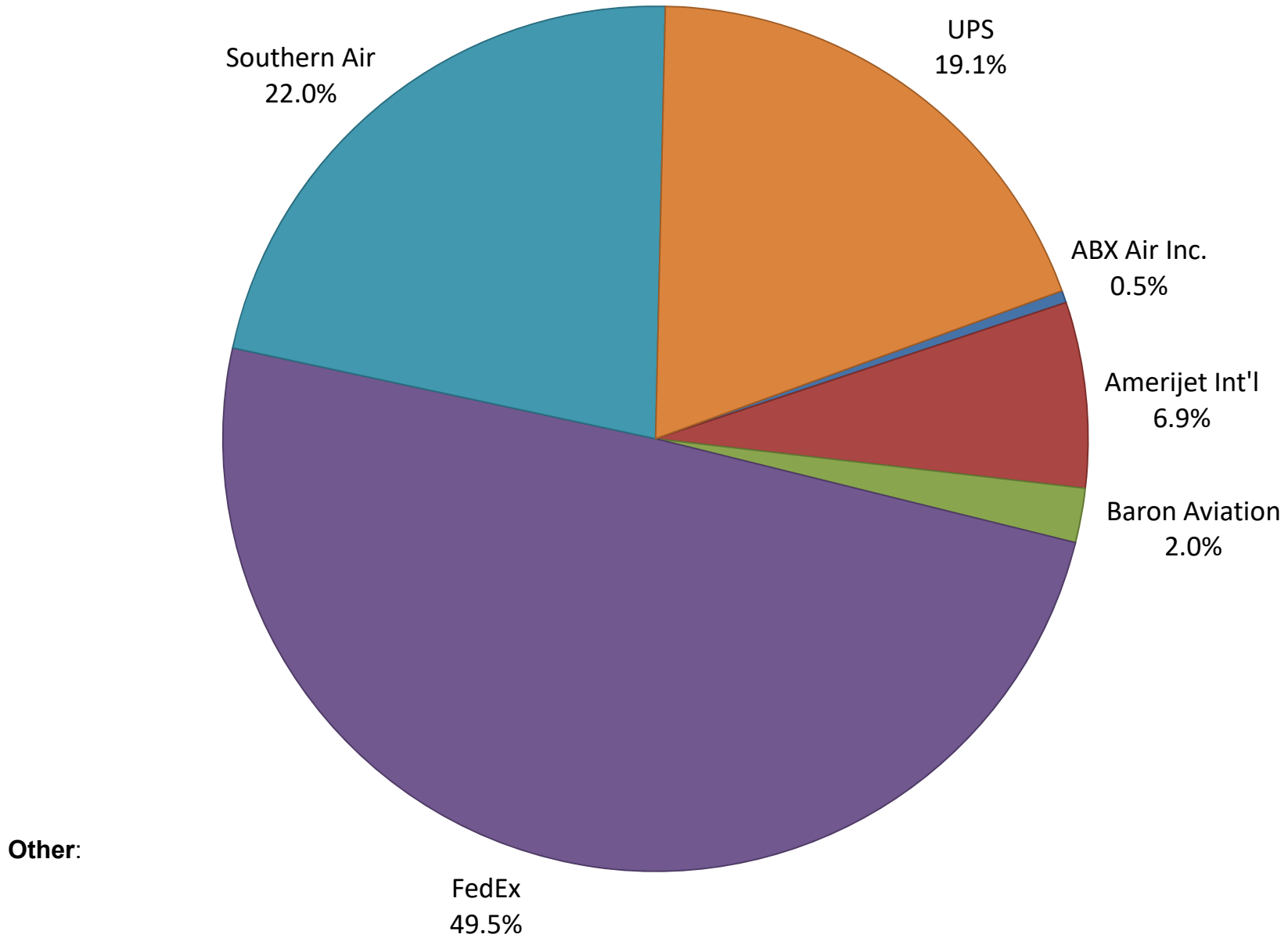
Note: American, Delta and United
Airlines percentages include Affiliates.

**AUS Belly Freight Market Shares
July 2021**

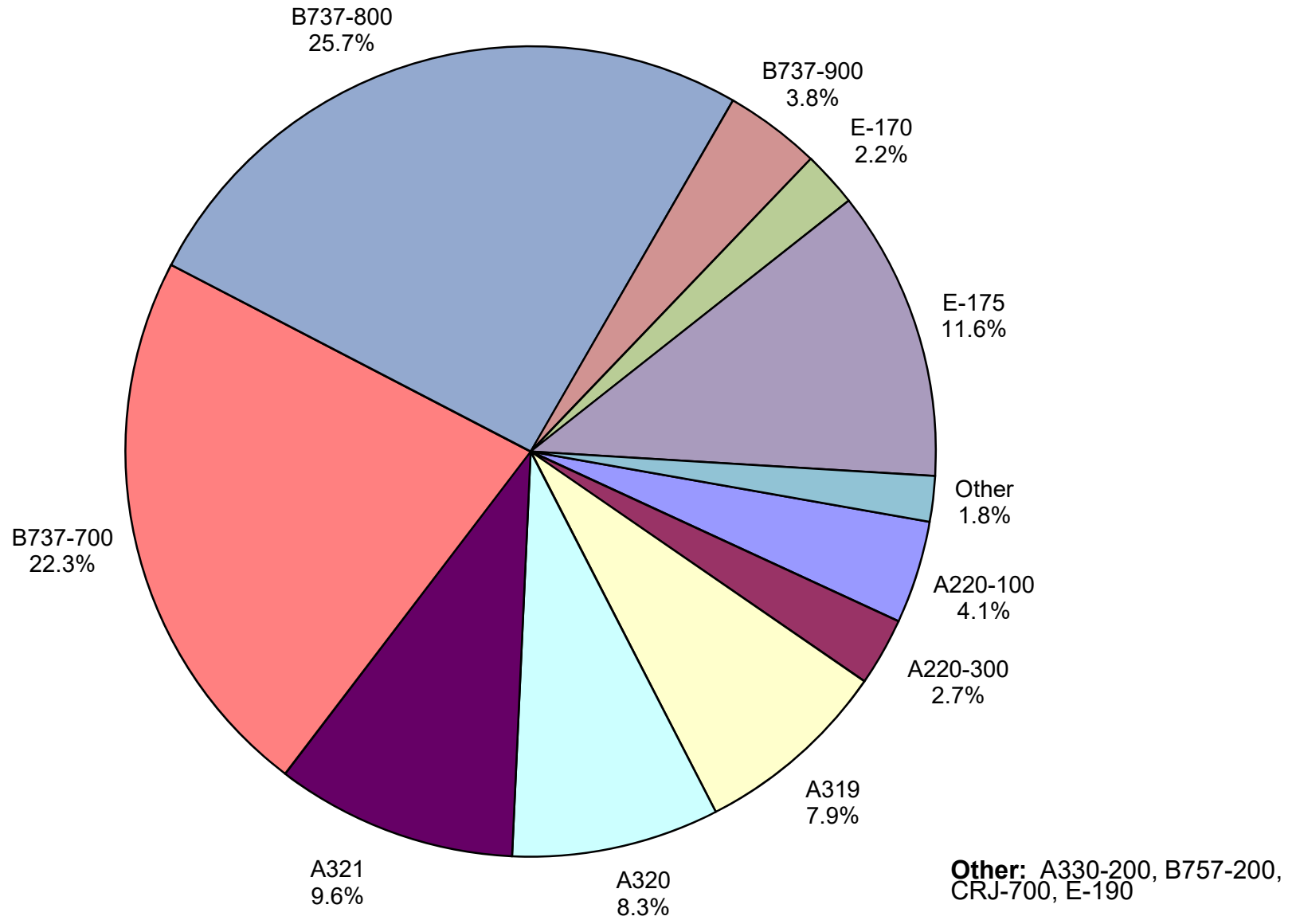


Other =

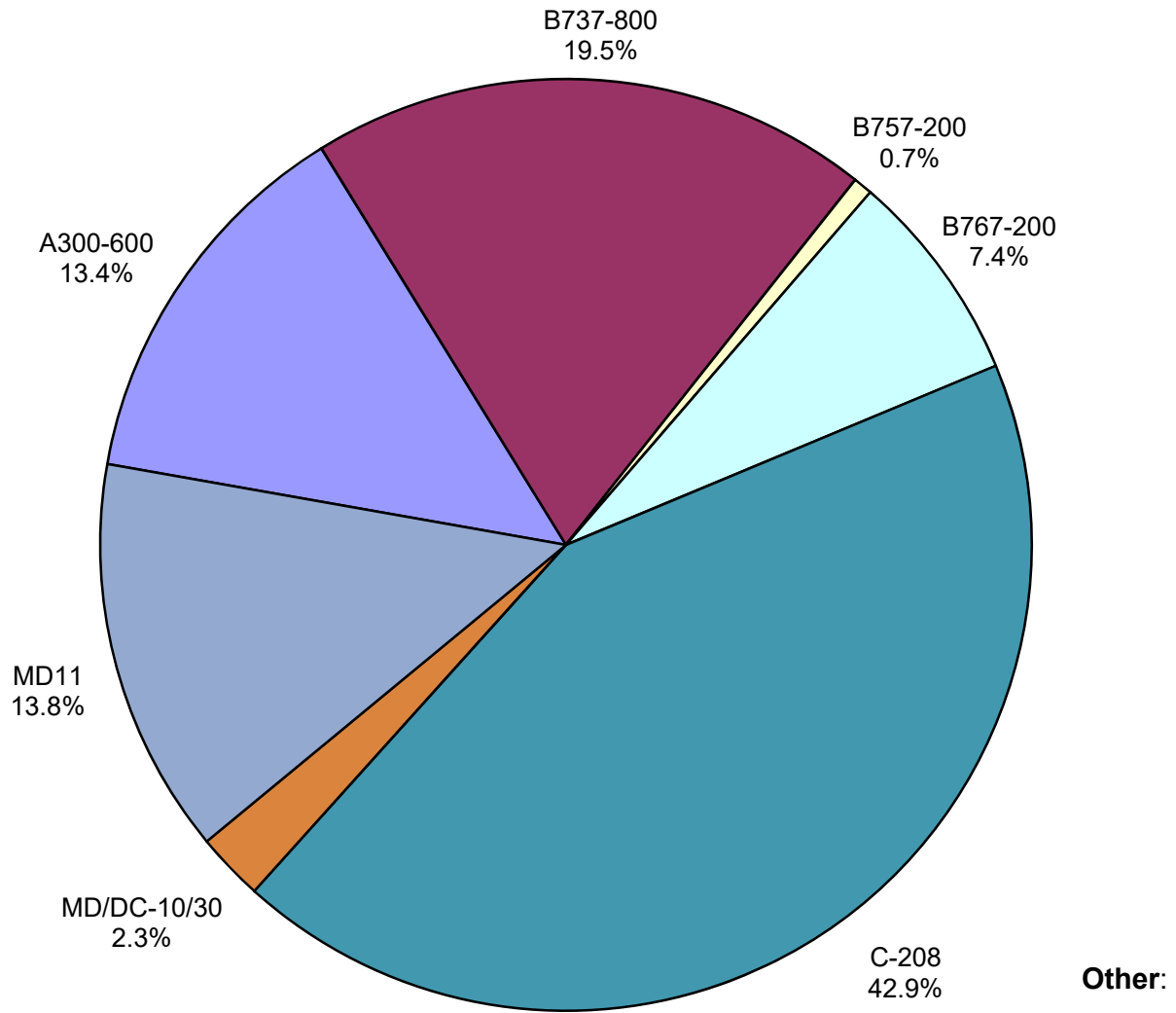
Air Cargo Market Share July 2021



AUS Scheduled Passenger Aircraft Fleet Mix July 2021



**AUS Scheduled Cargo Aircraft Fleet Mix
July 2021**



Austin-Bergstrom International Airport

Pax Detail Report - July, 2021

Company	Period				YTD				2021 Share	2020 Share	Share Diff
	7/2021	7/2020	Difference	Change	YTD 2021	YTD 2020	Difference	Change			
Aeroenlaces Nacionales, SA DE CV	0	0	0	0.0	0	197	-197	-100.0			
Aerovias de Mexico S.A. de C.V.	5,133	378	4,755	1,257.9	5,133	378	4,755	1,257.9	0.1	0.0	0.1
Aerovias de Mexico S.A. de C.V. Pre	0	0	0	0.0	0	9,915	-9,915	-100.0	0.0	0.2	-0.2
Air Canada	0	0	0	0.0	0	10,317	-10,317	-100.0	0.0	0.3	-0.3
Alaska Airlines INC	88,819	20,848	67,971	326.0	333,372	161,173	172,199	106.8	5.2	3.9	1.3
Allegiant Air LLC	35,778	13,918	21,860	157.1	110,990	53,983	57,007	105.6	1.7	1.3	0.4
American Airlines INC	339,708	88,116	251,592	285.5	1,415,213	825,062	590,151	71.5	22.3	20.1	2.2
British Airways PLC	0	0	0	0.0	0	29,217	-29,217	-100.0	0.0	0.7	-0.7
Delta Air Lines	213,388	27,608	185,780	672.9	888,499	530,476	358,023	67.5	14.0	12.9	1.1
Deutsche Lufthansa AG	0	0	0	0.0	0	15,883	-15,883	-100.0	0.0	0.4	-0.4
Frontier Airlines INC	22,475	11,921	10,554	88.5	122,961	144,703	-21,742	-15.0	1.9	3.5	-1.6
Hawaiian Airlines Inc	7,156	0	7,156	0.0	18,393	0	18,393	0.0	0.3	0.0	0.3
JetBlue Airways Corporation	40,997	4,839	36,158	747.2	244,150	131,925	112,225	85.1	3.8	3.2	0.6
Miami Air International INC Pre Bankruptcy	0	0	0	0.0	0	121	-121	-100.0	0.0	0.0	0.0
Norwegian Air UK LTD	0	0	0	0.0	0	3,474	-3,474	-100.0	0.0	0.1	-0.1
Southwest Airlines	532,013	140,931	391,082	277.5	2,153,496	1,373,326	780,170	56.8	33.9	33.5	0.4
Spirit Airlines Inc	73,816	65,797	8,019	12.2	308,365	278,743	29,622	10.6	4.9	6.8	-1.9
Sun Country Airlines/MN Airlines LLC	5,312	3,119	2,193	70.3	10,542	4,399	6,143	139.6	0.2	0.1	0.1
Swift Air LLC	83	0	83	0.0	1,226	928	298	32.1	0.0	0.0	0.0
United Airlines INC	176,627	28,590	148,037	517.8	741,552	528,627	212,925	40.3	11.7	12.9	-1.2
Report Totals	1,541,305	406,065	1,135,240	279.6%	6,353,892	4,102,847	2,251,045	54.9%	100.0%	99.9%	

Statistics Included in Report

Domestic Passengers: Enplaned Revenue, Deplaned Revenue, Enplaned Non-Revenue, Deplaned Non-Revenue

International Passengers: Enplaned Revenue, Deplaned Revenue, Enplaned Non-Revenue, Deplaned Non-Revenue

International Pre-Cleared Passengers: Enplaned Revenue, Deplaned Revenue, Enplaned Non-Revenue, Deplaned Non-Revenue

South Terminal Domestic Passengers: Enplaned Revenue, Deplaned Revenue, Enplaned Non-Revenue, Deplaned Non-Revenue

Austin-Bergstrom International Airport

Summary Landings Report

Landing Type: Total

Month	2021		2020		2019		% Change 2021- 2020		% Change 2020- 2019	
	Count	Weight	Count	Weight	Count	Weight	Count	Weight	Count	Weight
January	2,839	399,216,719	5,762	812,175,948	5,348	733,746,679	-50.73%	-50.85%	7.74%	10.69%
February	2,194	303,710,832	5,382	764,833,023	5,040	692,708,930	-59.23%	-60.29%	6.79%	10.41%
March	4,076	547,982,160	5,278	742,099,772	5,964	825,483,911	-22.77%	-26.16%	-11.50%	-10.10%
April	4,345	589,843,731	1,884	264,508,162	5,899	815,621,798	130.63%	123.00%	-68.06%	-67.57%
May	5,035	685,565,245	1,608	223,266,578	6,294	881,747,150	213.12%	207.06%	-74.45%	-74.68%
June	5,854	791,280,681	2,119	293,669,395	6,322	890,410,020	176.26%	169.45%	-66.48%	-67.02%
July	6,479	867,075,858	3,401	458,639,882	6,551	915,103,306	90.50%	89.05%	-48.08%	-49.88%
August	0	0	3,390	473,872,571	6,447	906,499,773	-100.00%	-100.00%	-47.42%	-47.73%
September	0	0	2,791	378,925,681	6,020	848,899,951	-100.00%	-100.00%	-53.64%	-55.36%
October	0	0	2,972	409,225,230	6,459	916,700,076	-100.00%	-100.00%	-53.99%	-55.36%
November	0	0	3,157	438,563,290	5,924	836,527,780	-100.00%	-100.00%	-46.71%	-47.57%
December	0	0	3,126	431,926,302	6,078	848,973,148	-100.00%	-100.00%	-48.57%	-49.12%
Totals For Selected Period	30,822	4,184,675,226	25,434	3,559,192,760	41,418	5,754,821,794	21.18%	17.57%	-38.59%	-38.15%
Yearly Totals	30,822	4,184,675,226	40,870	5,691,705,834	72,346	10,112,422,522	-24.59%	-26.48%	-43.51%	-43.72%