

Riparian Restoration Features

Restore healthy soil conditions and vibrant native plant communities within the Shoal Creek riparian zone.

Objectives

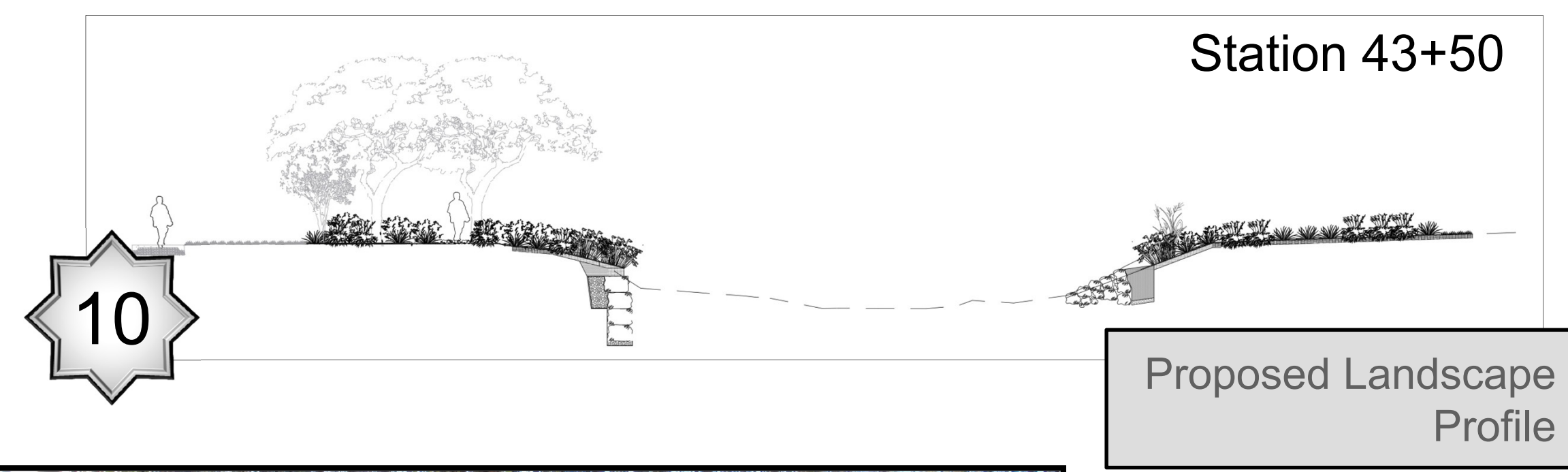
- Reduce runoff velocities; increase runoff storage and infiltration
- Extend Shoal Creek base flow
- Foster a human connection with vital riparian habitat
- Provide habitat
- Protect heritage tree root zones



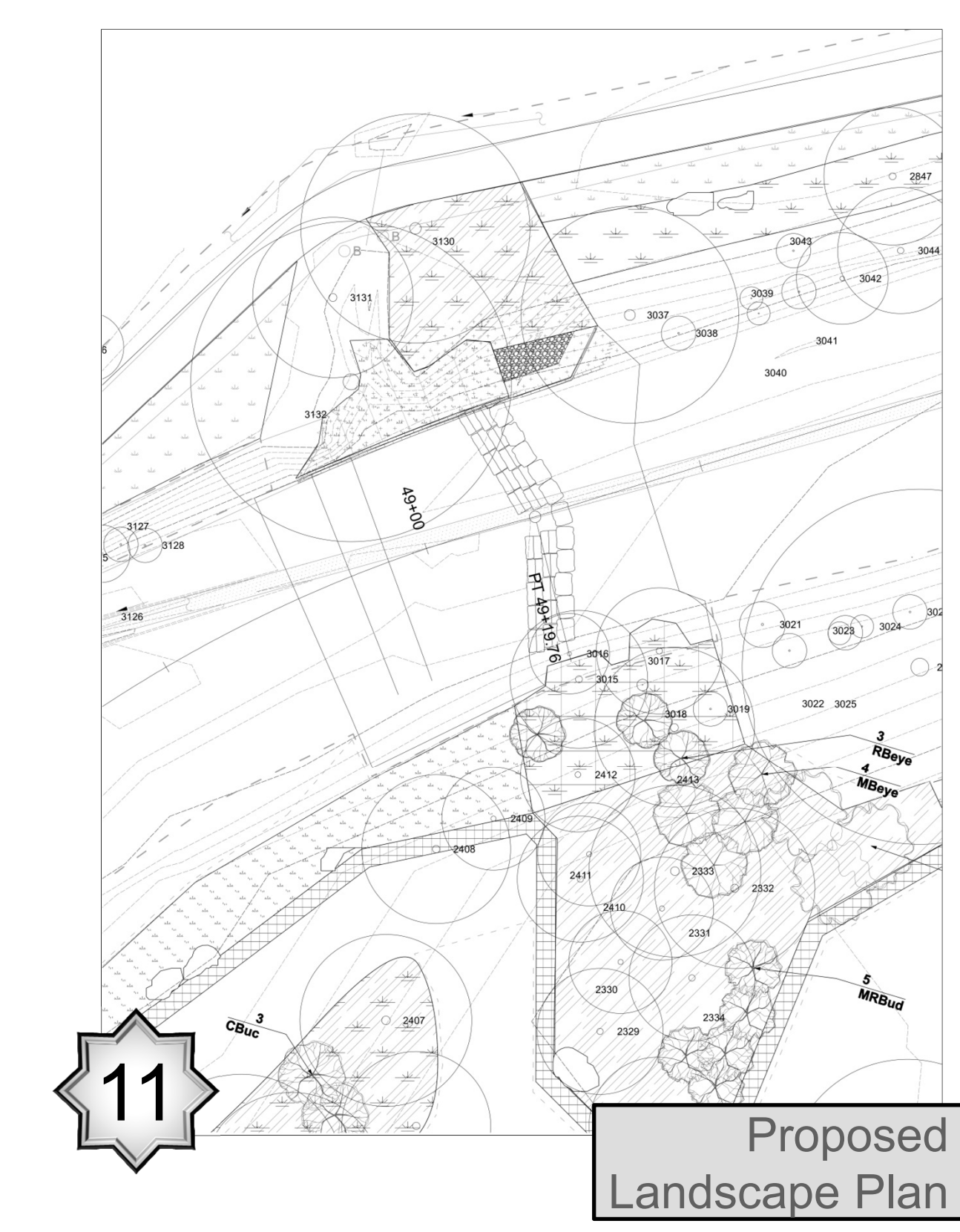
Intensive restoration area: restore soil, protect tree root zones, accommodate park users between creek and grove, establish un-mowed strip of native grass at top of bank



Restore soil, plant with seed, establish no mow zone



Repair and control erosion, restore soil, establish shade-loving plants, establish no mow zone



shoal creek restoration
15th to 28th streets

Riparian Restoration:
24th Street to Gaston Blvd.

