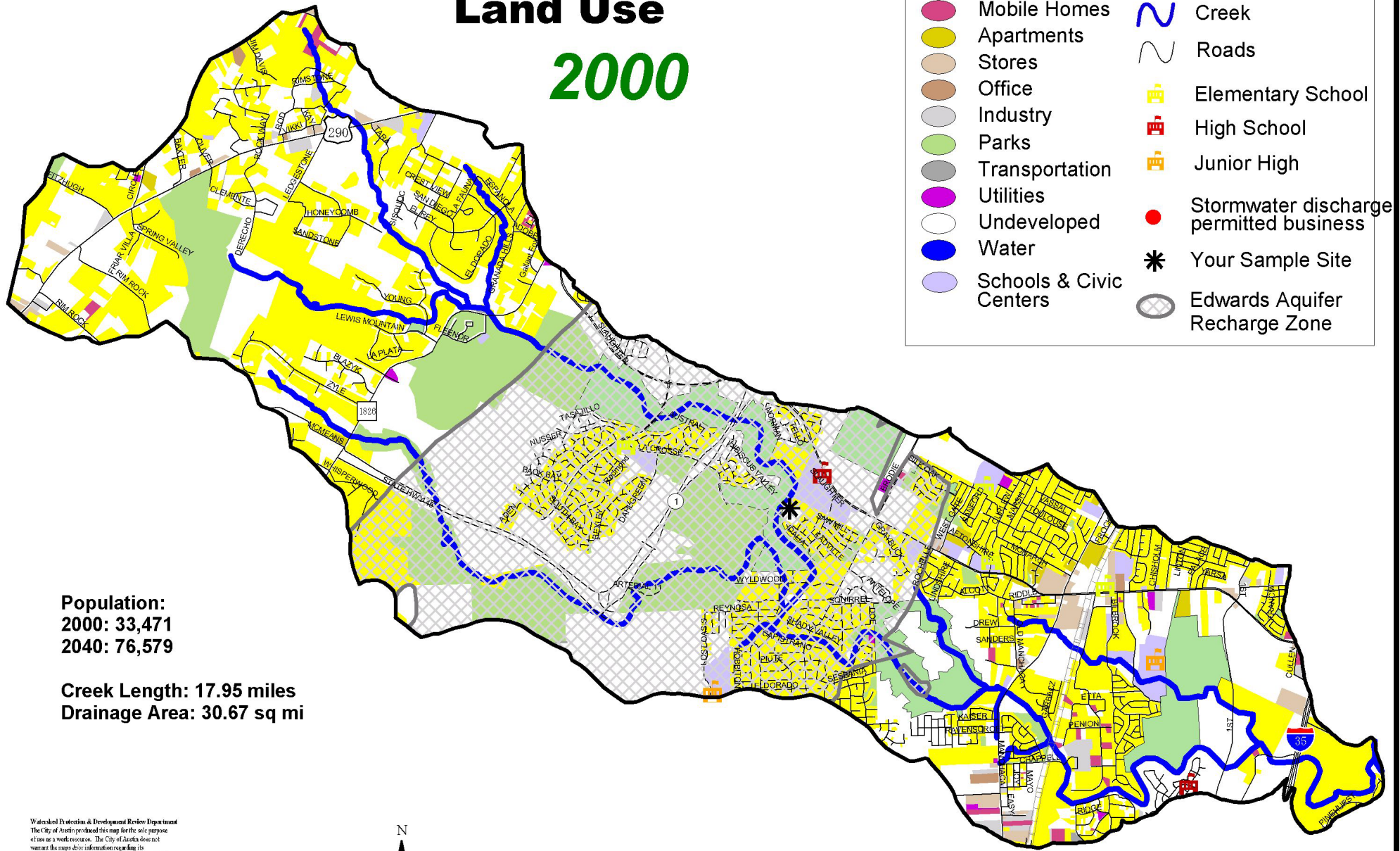


# Slaughter Creek Watershed

## Land Use

### 2000



- |  |                         |  |   |
|--|-------------------------|--|---|
|  | Houses                  |  | Railroads                               |
|  | Mobile Homes            |  | Creek                                   |
|  | Apartments              |  | Roads                                   |
|  | Stores                  |  | Elementary School                       |
|  | Office                  |  | High School                             |
|  | Industry                |  | Junior High                             |
|  | Parks                   |  | Stormwater discharge permitted business |
|  | Transportation          |  | Your Sample Site                        |
|  | Utilities               |  | Edwards Aquifer Recharge Zone           |
|  | Undeveloped             |  |   |
|  | Water                   |  |   |
|  | Schools & Civic Centers |  |   |

**Population:**  
**2000: 33,471**  
**2040: 76,579**

**Creek Length: 17.95 miles**  
**Drainage Area: 30.67 sq mi**

Watershed Protection & Development Review Department  
 The City of Austin produced this map for the sole purpose  
 of use as a work reference. The City of Austin does not  
 warrant the maps or information regarding its  
 accuracy or completeness. Reproduction is not permitted  
 without permission from the City of Austin.  
 Watershed Protection & Development Review Department



0 2000 Feet