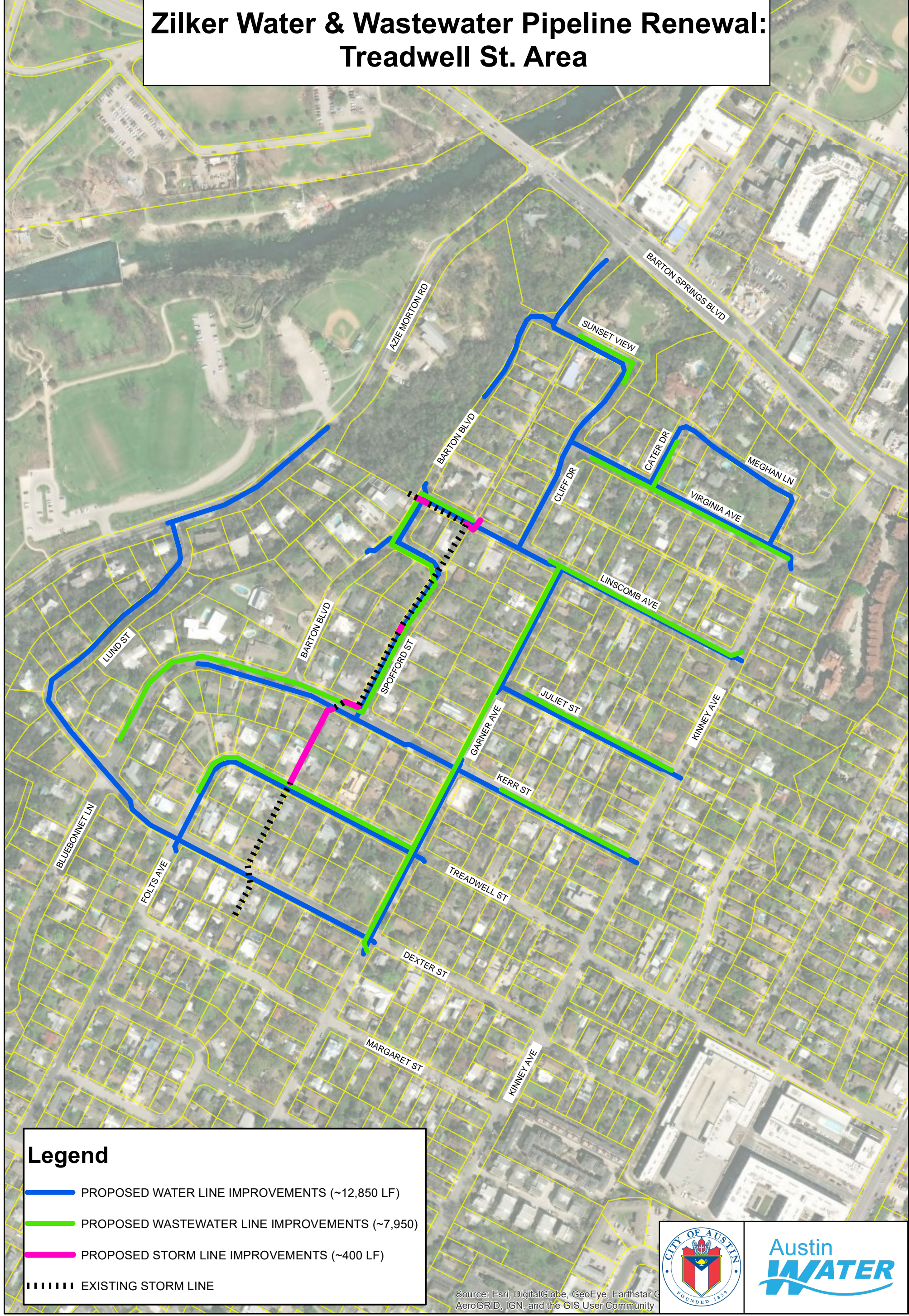


Zilker Water & Wastewater Pipeline Renewal: Treadwell St. Area



Legend

- PROPOSED WATER LINE IMPROVEMENTS (~12,850 LF)
- PROPOSED WASTEWATER LINE IMPROVEMENTS (~7,950)
- PROPOSED STORM LINE IMPROVEMENTS (~400 LF)
- EXISTING STORM LINE

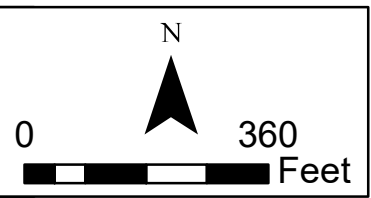


Source: Esri, DigitalGlobe, GeoEye, Earthstar, GeoEye, AeroGRID, IGN, and the GIS User Community

Updated
OCTOBER 16, 2019

Lockwood, Andrews & Newnam, Inc.
A LEO A DALY COMPANY

Project Location Map



Lockwood, Andrews & Newnam, Inc. makes no representations or warranties regarding accuracy or completeness of the information depicted on this map or the data from which it was produced. This map is NOT suitable for survey purposes and does not purport to depict or establish boundaries between land owners or locations of utility infrastructure where survey data is available.