

WELCOME

Beverly S. Sheffield Northwest District Park Vision Plan
Community Meeting #3 – Draft Final Vision Plan
August 3, 2021



Pause to set up Poll Everywhere

PollEv.com/austinparks512, or

Text AUSTINPARKS512 to 22333

When Questions are activated, respond at **PollEv.com/austinparks512**, or
Text **AUSTINPARKS512** to **22333** once to join

Poll Everywhere





This session is being recorded and will be posted on the project website.



We ask all participants to please keep your mics muted during the presentation.



We want to hear from you! Go to pollev.com/AustinParks512 to answer our questions during the presentation.



Should you have questions/comments, please use the chat feature to share.



The meeting facilitator will provide an opportunity for you to share your questions & comments.

Zoom Housekeeping



- Project Team
- Park Vision Plan
- Pool Update
- Dam Update
- Survey #3 -What We Heard
- Proposed Final Draft Vision Plan
- Poll Everywhere
- Next Steps
- Comments & Questions
- How to Stay Involved



Meeting Agenda



In Today's Meeting:

Darcy Nuffer

Landscape Architect / Project Contact
City of Austin Parks and Recreation Department

Drew Carman

Director of Park Planning and Design/ Project Manager
RVI Planning and Landscape Architecture

Nhasala Manandhar

Designer
RVI Planning and Landscape Architecture

Other Team Members:

Rifeline - Public Involvement Consultant

Hicks & Company - Environmental Consultants

Jose I. Guerra, Inc. - Civil Engineering Consultants

Cotera + Reed Architects - Architectural Consultants

Altura Solutions - Accessibility Consultant

Vision Plan Team



The Austin Parks and Recreation Department is working with the community to create a new vision for Beverly S. Sheffield Northwest District Park

The purpose of the Vision Plan for this 31 Acre park is to:

- Engage the community in creating a vision of the park's future.
- Create a plan to guide phased implementation of the vision.



Project Introduction



- Limitations on certain types of improvements within floodplain
- Access points and circulation
- Limited sense of arrival
- Fragmented park areas
- Accessibility
- Pond water quality
- Trail network connectivity



Site Constraints

Pool Recommendations

- Upgrade the pool to serve as a Regional 50- Meter Aquatic Center
- Replace the main pool tank, but maintain its general configuration
- Add a slide, climbing wall, or other fun activities
- Replace the pool deck and filtration system

Site Recommendations

- Provide new utility connections
- Provide storm water improvements

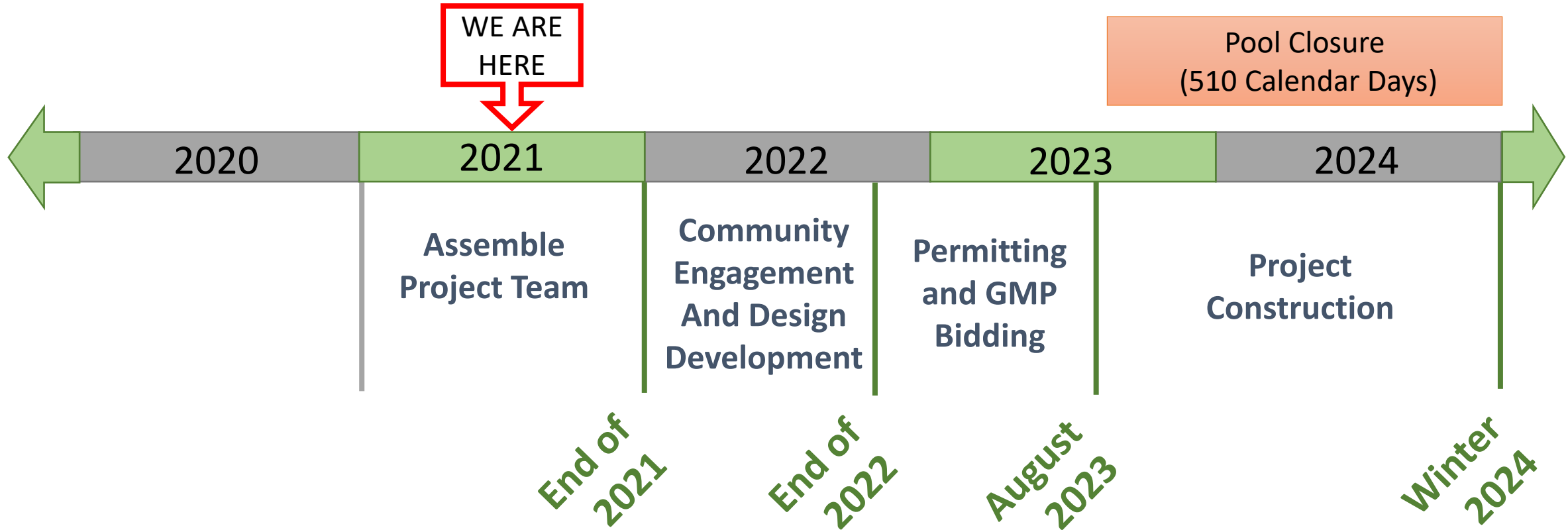


Building Recommendations

- Major renovation of existing facility
- Total renovation of Men's and Women's restroom
- Construction new building for concessions, office and family restrooms

Northwest Pool Recommendations

Northwest Pool Timeline: Timeline*



Northwest Pool Timeline

* This is an estimated timeline that is based on the current phase.

Patrick Beyer, PLA
Parks and Recreation Department
Project Manager
Patrick.beyer@austintexas.gov
512-974-9476



Pool Project Contact





— Shoal Creek - - - Top of Dam → Inflow Spillway ← Outfall Pipe □ Auxiliary Spillway

The Dam and Regional Detention Facility: How it works

Dam Safety

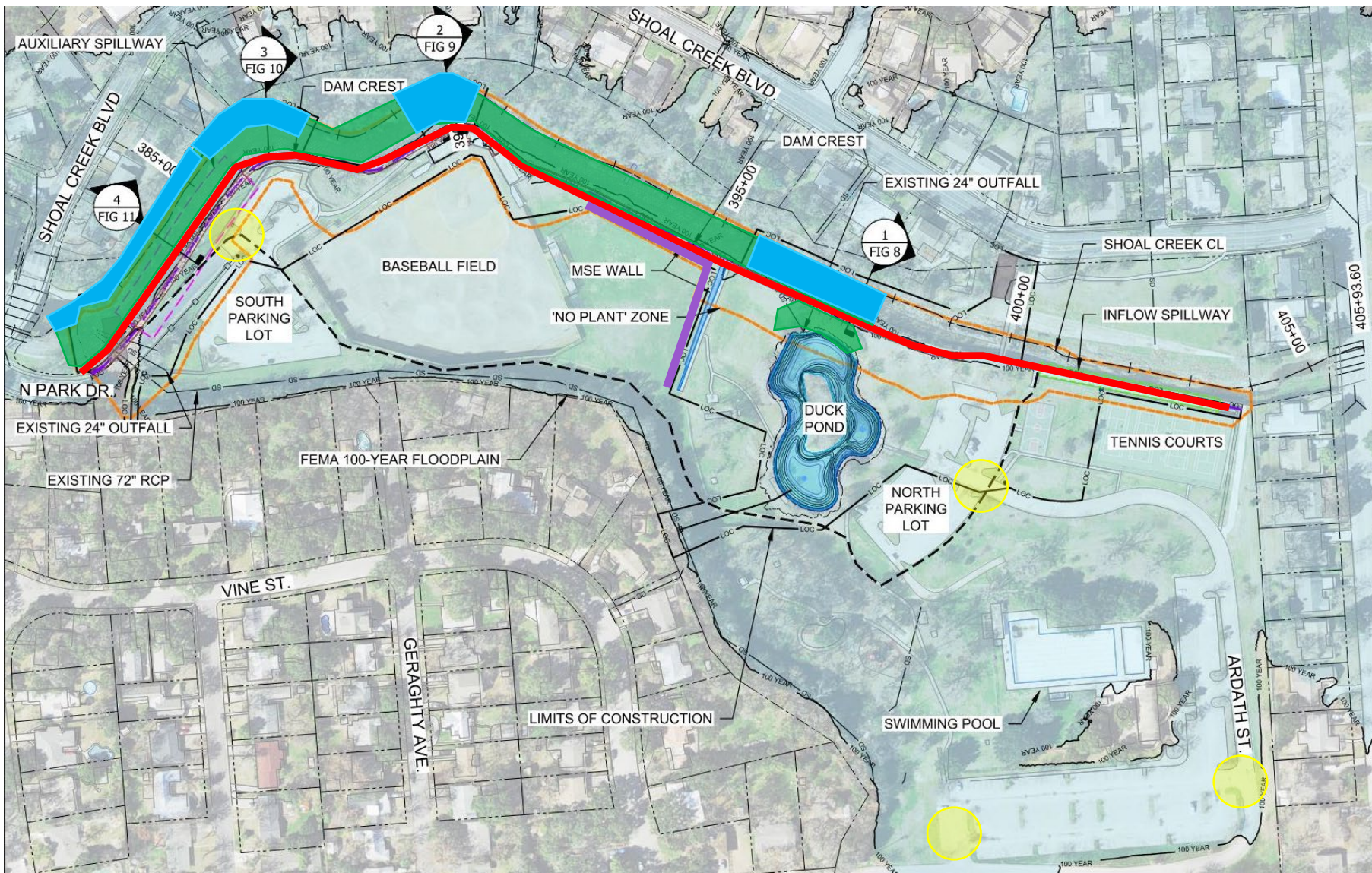
- Regulated requirements for structural stability
 - Texas Commission on Environmental Quality
 - City of Austin Drainage Criteria Manual

Dam Maintenance

- Items that don't currently impact the stability of the dam

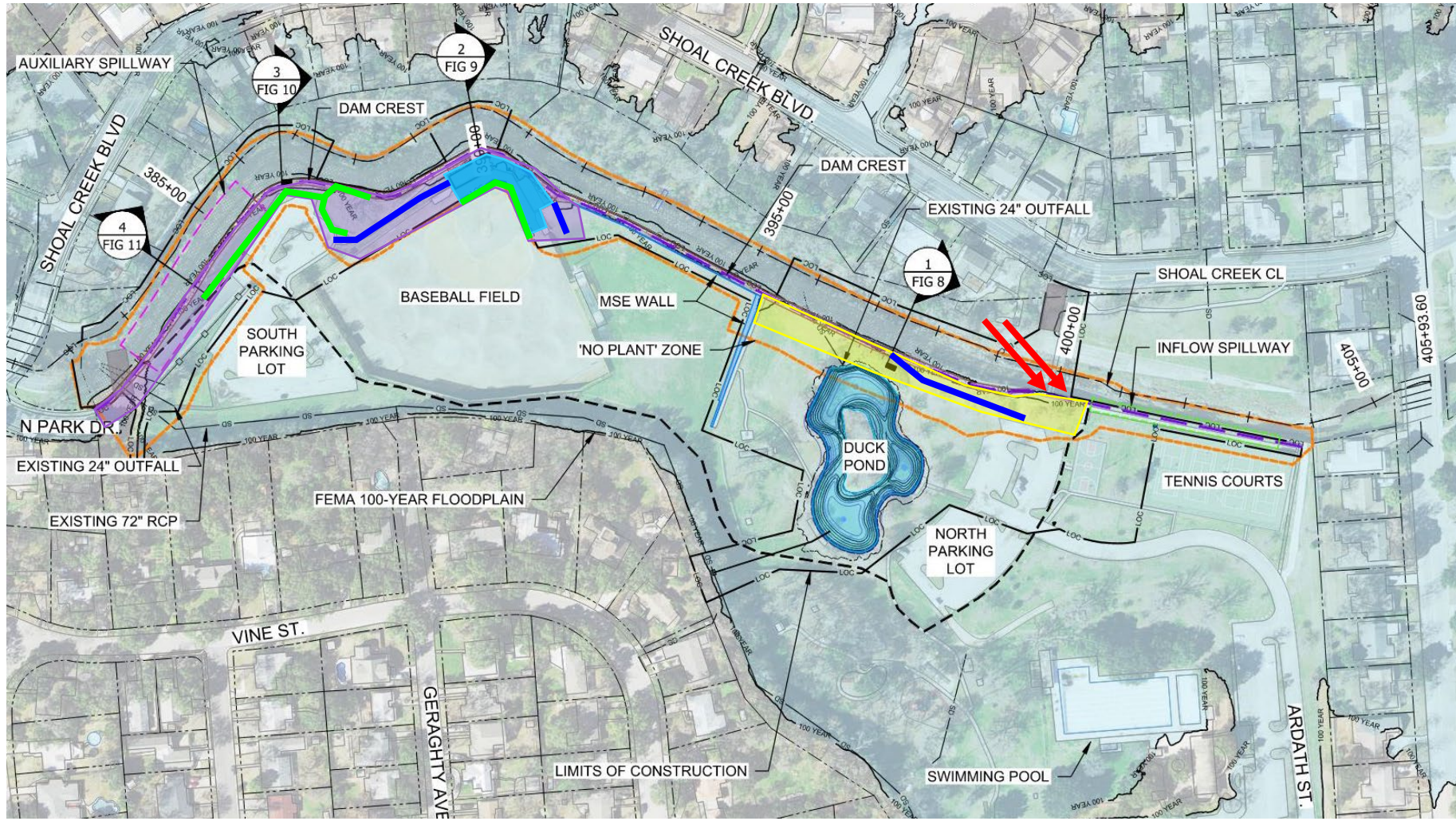
Park Drainage and Water Quality

- Coordinated with PARD Vision Plan
- Has no impact on the structural stability of the dam



- **OVERTOPPING PROTECTION**
 - **WARNING SIGNS****
 - **REMOVAL OF WOODY VEGETATION AND ESTABLISHING RIPARIAN VEGETATION**
 - **CREEKSIDE REHABILITATION OF THE EMBANKMENT**
 - **EVALUATE THE VERTICAL MSE WALLS****
- ** Items Correlated with PARD's Vision Plan

The Dam Project: Dam Safety Improvements



- PEDESTRIAN BRIDGE EXPANSION PLATES
 - REMOVING IRRIGATION SYSTEM IN EMBANKMENT
 - POST-INSTALL DRAINAGE AND SEALING CRACKS/JOINTS FOR RETAINING WALLS
 - STABILIZE BASEBALL STRUCTURES**
 - EROSIIVE FOOT TRAFFIC WALKWAYS**
 - LOCAL EROSION REPAIR**
- ** Items Correlated with PARD's Vision Plan

The Dam Project: Dam Maintenance Improvements



Online Survey #3 Results



Enhance and preserve park natural amenities

- Preserve and enhance shade within the park
- Improve and maintain the duck pond
- Add more native habitat areas (trees and grasses/wildflowers)
- Remove impervious cover

A

Enhance and increase recreational amenities (active and passive)

- Support walkers and bikers with adequate trail networks
- Add seating for passive recreational opportunities
- Incorporate more environmental/nature active uses of the park
- Support existing active recreation uses (baseball, tennis, pickleball, pool)
- Provide dedicated spaces for gatherings, pedestrians, cyclists and dogs
- Develop unutilized areas of park
- Improve lighting
- Improve playground and restroom facilities

B

Increase park connectivity and park identity

- Better connect the park to the neighborhood and nearby recreational amenities
- Enhance signage and wayfinding
- Create opportunities to learn about the park and its history
- Update existing footbridge to park
- Build a new footbridge to park

C

Balance park amenities with other City infrastructure needs

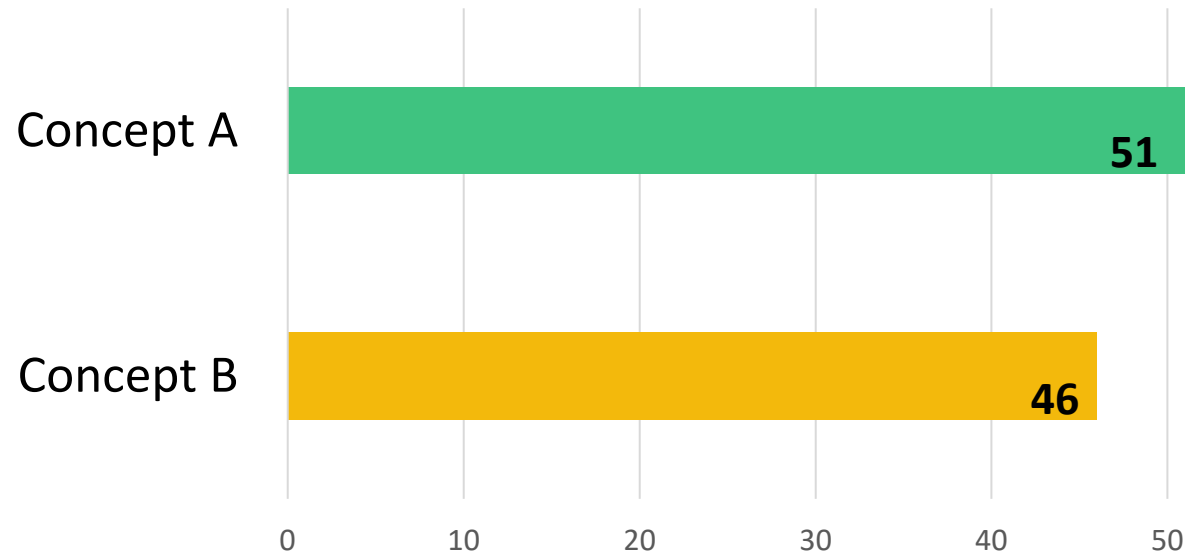
- Coordinate dam rehabilitation requirements with community needs
- Provide space within the vision plan for pool modernization
- Plan for sewer line replacement project

D

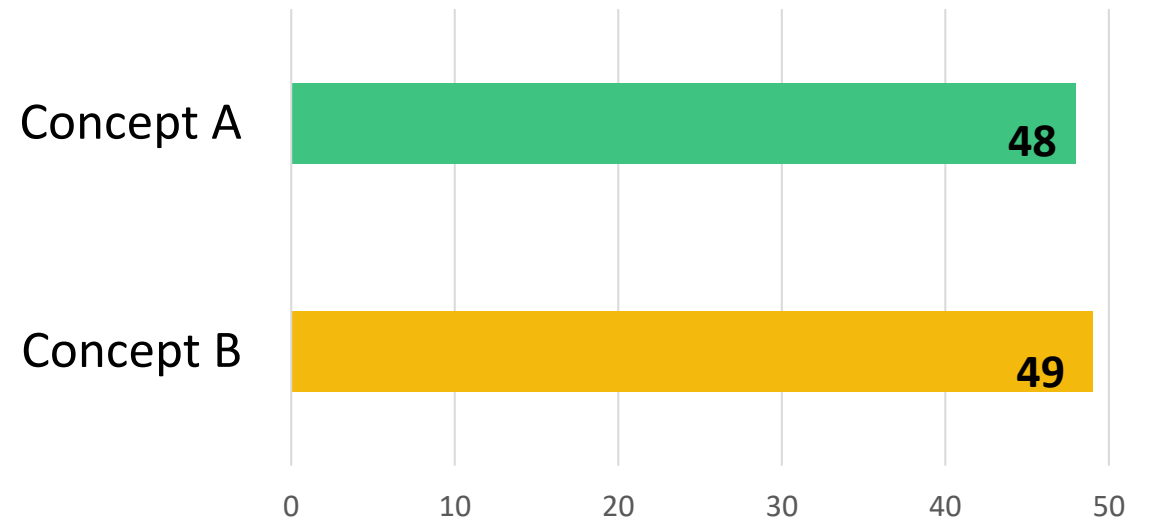
Final Planning Values to Guide the Vision Plan



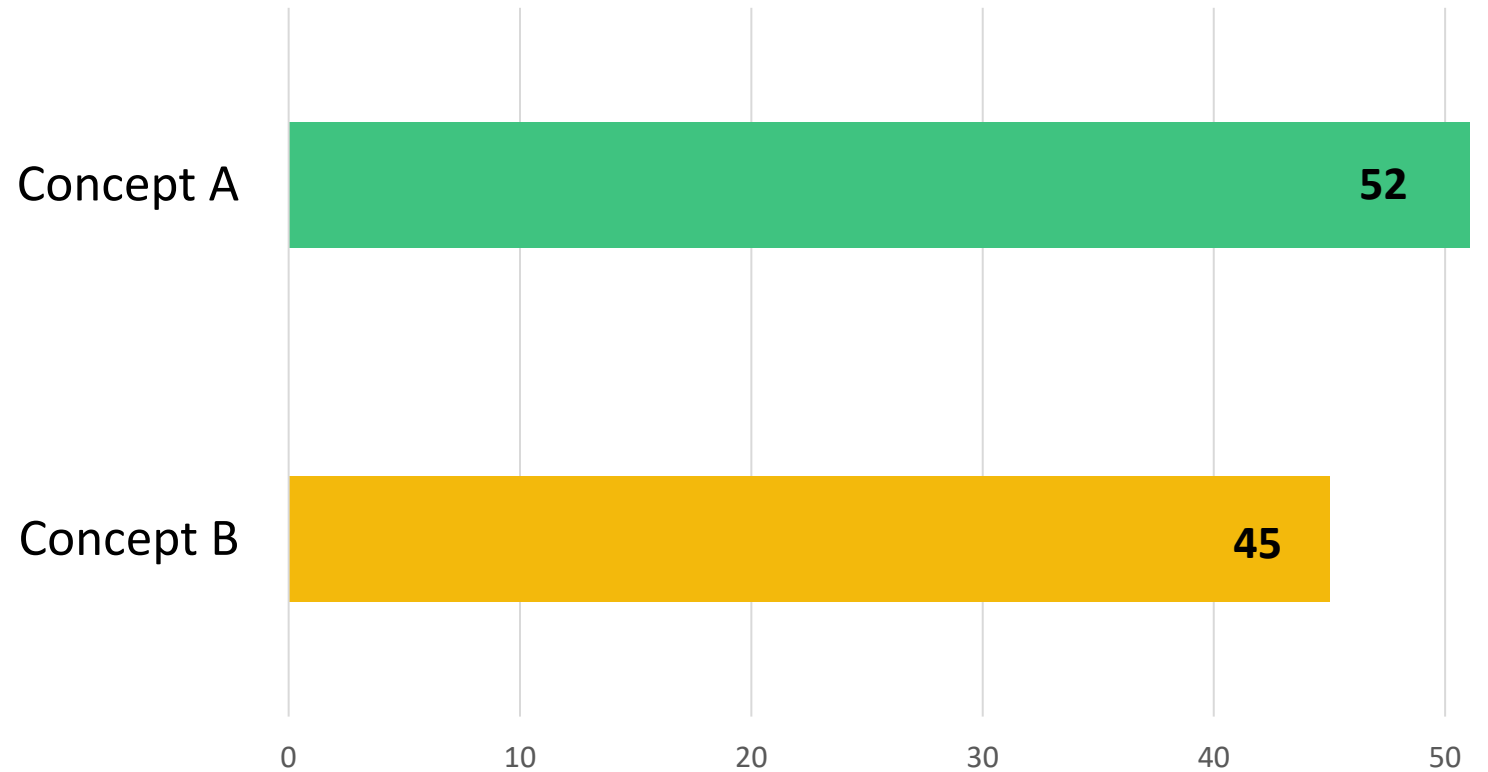
Which overall concept better enhances and preserves park natural amenities?



Which overall concept better enhances and increases recreational amenities (active and passive)?



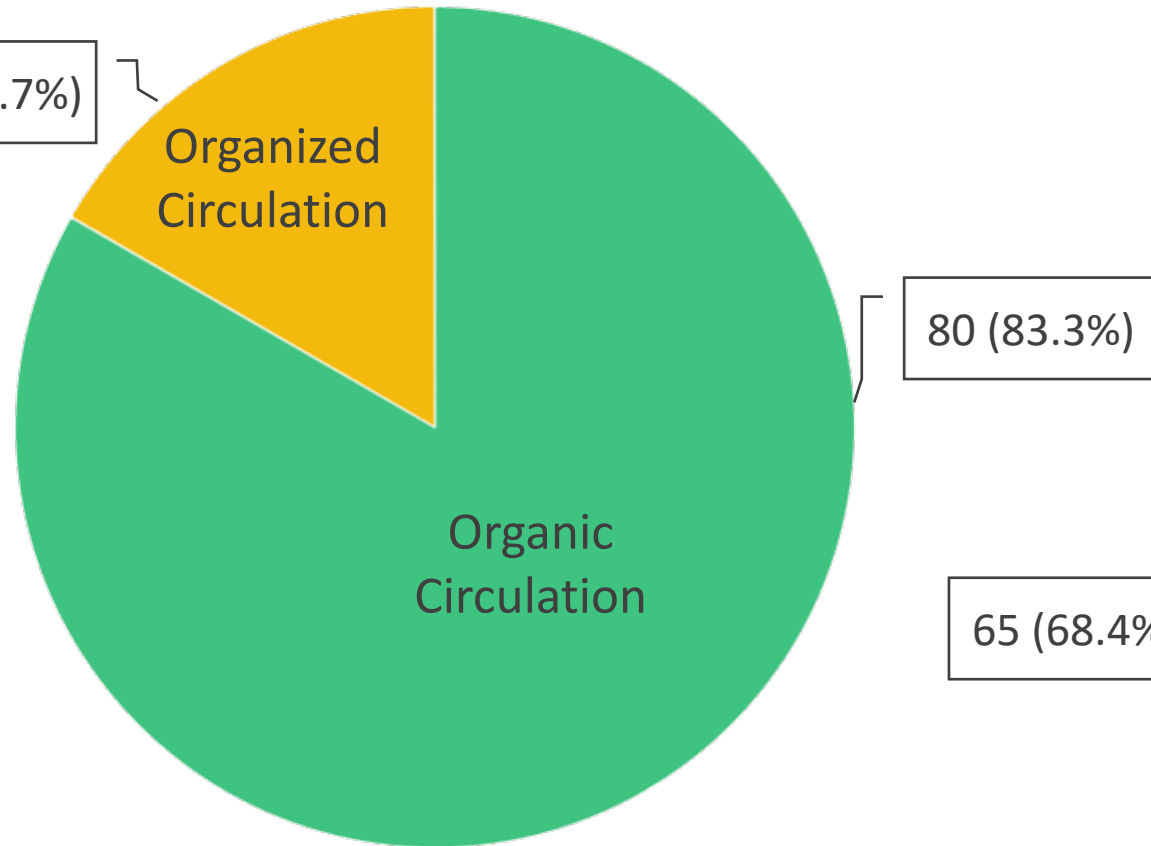
Which overall concept better increases park connectivity and park identity?



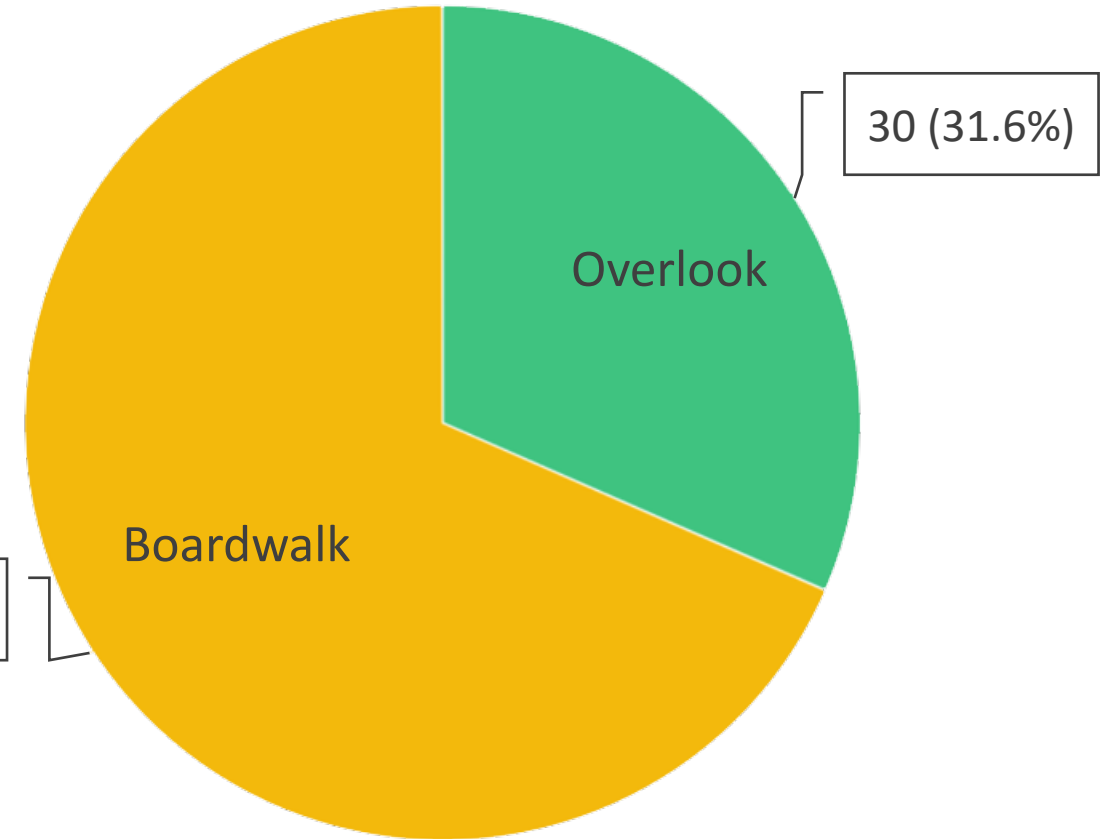
Online Survey #3 Results – Preferences according to Planning Values



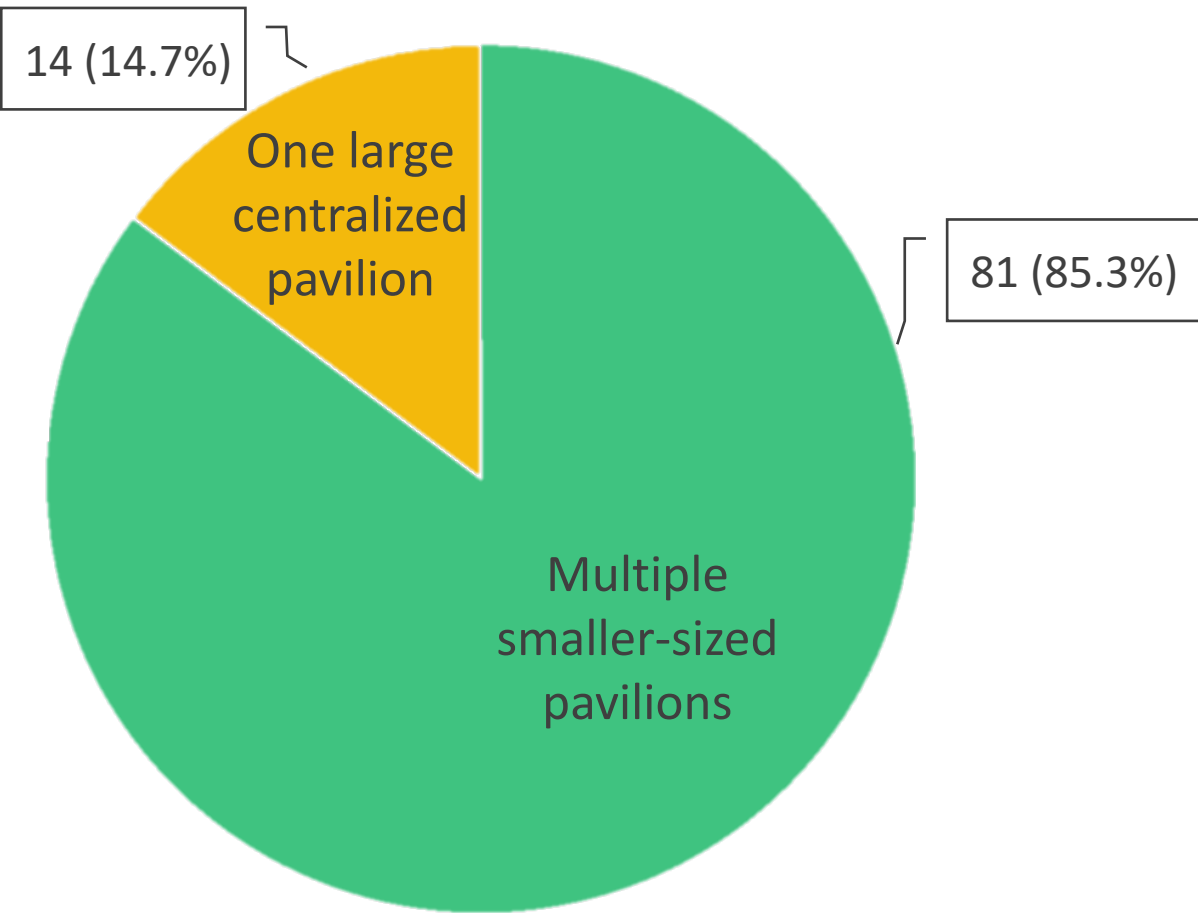
What is your path circulation within the park preference?



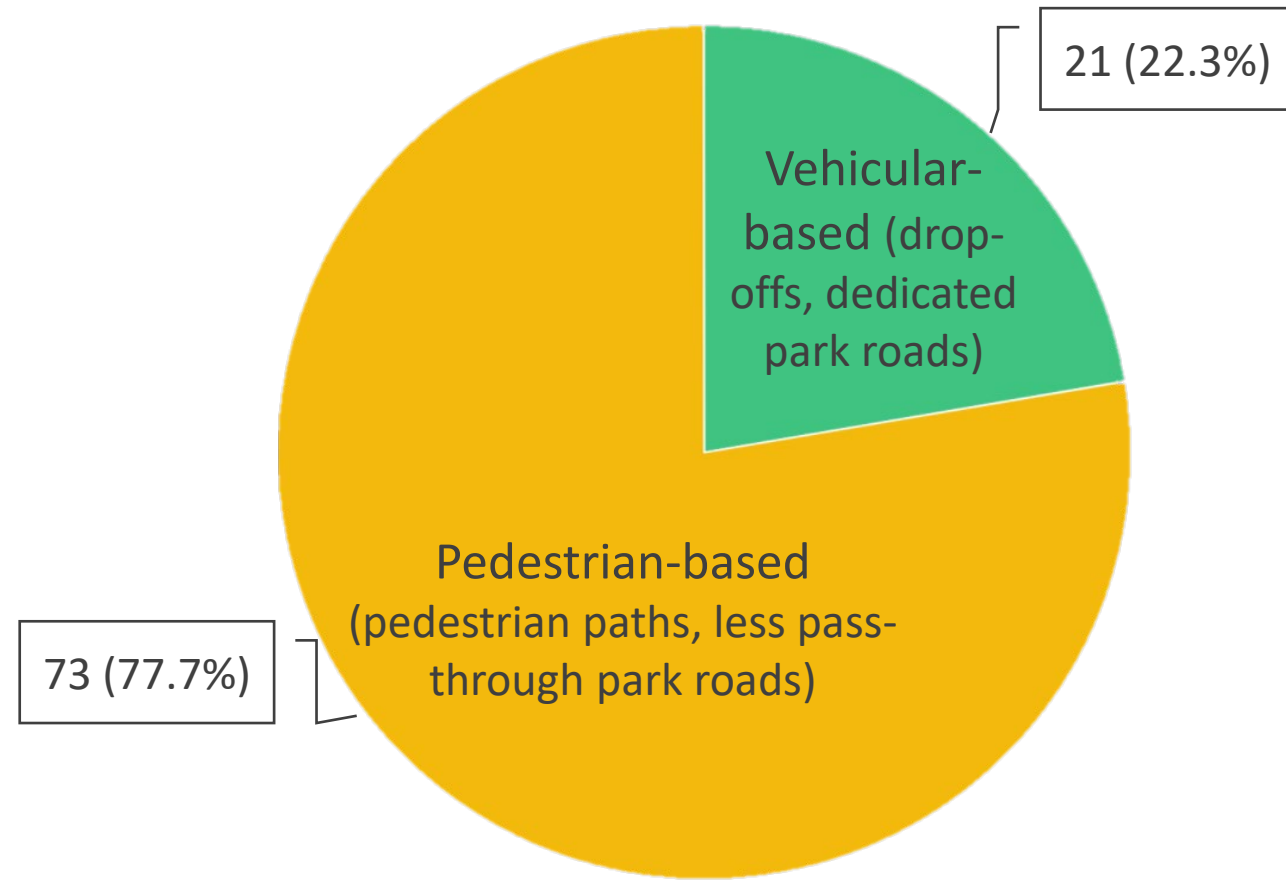
How would you prefer to engage with the pond?



How would you prefer the pavilion layout?



Which style perimeter park circulation do you prefer?



Is there a planned amenity at the park that we are missing in the matrix?



Online Survey #3 Results – Missing Park Amenities



What other comments or questions do you have for the project team?



Suggestions:

- Eliminate some parking
- Include markers throughout the park
- Add designated pickleball courts
- Add more toddler swings
- Repair tennis courts
- Add more playground options
- Ensure ADA-compliance throughout
- Use more granite sand on trails
- Provide separate bathrooms away from pond
- Use hooded lights to stray from light pollution
- Make bridge(s) wide enough for two-way traffic
- Provide connections to Shoal Creek bikeway
- Improve pavement

What other comments or questions do you have for the project team?



Support expressed for potential proposed updates

Concerns expressed:

- Proximity of bike playground so close to the creek could be unsafe (consider location at NW corner of park)
- Including a food truck area on site
- Disturbing wildlife/birds with pond improvements

Questions:

- Who will maintain the community orchard or garden?
- How will different areas of the park be maintained?



LEGEND

1. ENTRY MONUMENT
2. OVERLOOK
3. OPEN MULTIUSE LAWN
4. RETAINING WALL
5. WET POND AND HABITAT EXPANSION
6. RESTROOM
7. PLAYScape AREA
8. BASKETBALL COURT
9. BOARDWALK
10. PICKLEBALL COURTS
11. VEGETATIVE FILTER STRIP OR OTHER BMP
12. STAIRS
13. PICNIC AREA WITH SMALL SHADE STRUCTURES
14. SHADE CANOPY
15. ACCESSIBLE ROUTE
16. BRIDGE
17. BIKE PLAYGROUND
18. LIMESTONE BLOCK RETAINING WALL
19. BIKE LANE
20. NO NEW TREE ZONE

POND SURFACE AREA (INCLUDING THE ISLAND):
 EXISTING: (.75 ac)
 PROPOSED: APPROX. 46,750 Square feet (1.07ac)

PARKING

POOL PARKING	
EXISTING	- 182
PROPOSED	- 156
PARK/ TENNIS/ BASEKETBALL AREA	
EXISTING	- 71
PROPOSED	- 39
BASEBALL	
NO CHANGE	
TOTAL	
EXISTING	- 328
PROPOSED	- 195
133 TOTAL REMOVED	

Draft Final Vision Plan





Concept Illustrations



Needs Assessment Matrix

Amenity (Alphabetical Order)	Planning Value
Baseball Facility/Bldg Improvements	B,C
Entry Sequence, Signage or Features	C
Improved/Expanded Trails	B,C
Kids 'Bike Playground' (Pump Track)	B
MSE Wall Removal	A,B,C,D
Native Habitat - Riparian & Ephemeral Channels	A,B,C,D
Native Habitat - Native Grass & Wildflower	A,B,C
Native Habitat - Woodlands	A,B,C
Native Tree Plantings - Design Based	A, B
Open Lawn	B,C
Park Signage (Directional)	C
Park Signage (Interpretive)	B,C
Parking Removal and Circulation Modifications	B,D
Pedestrian Bridge Improvements	B,C
Pickleball Courts	B
Picnic Opportunities	B
Playscape (Ages 2-5)	B,C
Playscape (Ages 5-12)	B,C
Playscape Swingset	B
Pond Improvements, Functional & Habitat	A, B,C, D
Public Art	B,C
Restroom (Servicing Greater Park Area)	B,D
Shade Structures	B

Planning Values

Collection A

Enhance and preserve park natural amenities

- Preserve and enhance shade within the park
- Improve and maintain the duck pond
- Add more native habitat areas (trees and grasses/wildflowers)
- Remove impervious cover

Collection B

Enhance and increase recreational amenities (active and passive)

- Support walkers and bikers with adequate trail networks
- Add seating for passive recreational opportunities
- Incorporate more environmental/nature active uses of the park
- Support existing active recreation uses (baseball, tennis, pickleball, pool)
- Provide dedicated spaces for gatherings, pedestrians, cyclists and dogs
- Develop unutilized areas of park
- Improve lighting
- Improve playground and restroom facilities

Collection C

Increase park connectivity and park identity

- Better connect the park to the neighborhood and nearby recreational amenities
- Enhance signage and wayfinding
- Create opportunities to learn about the park and its history
- Update existing footbridge to park
- Build a new footbridge to park

Collection D

Balance park amenities with other City infrastructure needs

- Coordinate dam rehabilitation requirements with community needs
- Provide space within the vision plan for pool modernization
- Plan for sewer line replacement project

Needs Assessment Matrix



Pause to set up Poll Everywhere

PollEv.com/austinparks512, or

Text AUSTINPARKS512 to 22333

When Questions are activated, respond at **PollEv.com/austinparks512**, or
Text **AUSTINPARKS512** to **22333** once to join

Poll Everywhere



What do you like most about the draft final vision plan?



[PollEv.com/austinparks512](https://www.poll-ev.com/austinparks512), or
 Text AUSTINPARKS512 to 22333



What do you dislike about the draft final vision plan?



[PollEv.com/austinparks512](https://www.pollEv.com/austinparks512), or
 Text AUSTINPARKS512 to 22333



Which of these playscape themes do you prefer?



a. Nature-based playscape

b. Themed playscape of plants & animals found in the park and pond

c. Colorful component-based playscape

d. None of the above

[PollEv.com/austinparks512](https://www.poll-ev.com/austinparks512), or
Text AUSTINPARKS512 to 22333



Do you prefer the park's open spaces to be primarily:



a. Maintained turfgrass



b. Native grasses & wildflowers,
i.e.: "grow zones"



c. Mixture of both

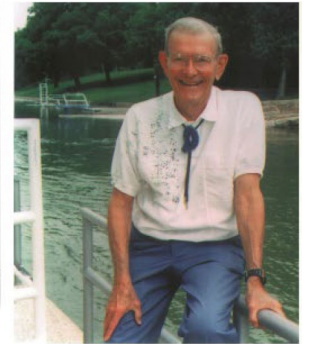
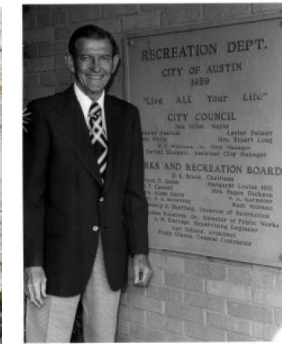
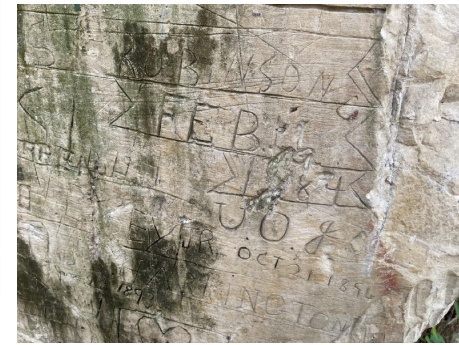
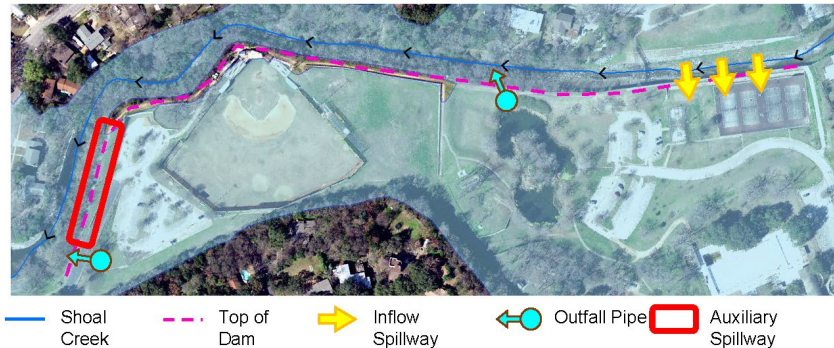
[PollEv.com/austinparks512](https://www.poll-ev.com/austinparks512), or
Text **AUSTINPARKS512** to **22333**



These are a few topics for interpretative opportunities we are considering for Beverly S. Sheffield Northwest District Park :

- How water, floods and drainage work in and around the park
- Who was Beverly S. Sheffield?
- Important historical and cultural resources of the park
- Habitat and inhabitants of the park (local flora and fauna)

What other stories would you like to see told about the park?



[PollEv.com/austinparks512](https://www.pollevo.com/austinparks512), or

Text AUSTINPARKS512 to 22333



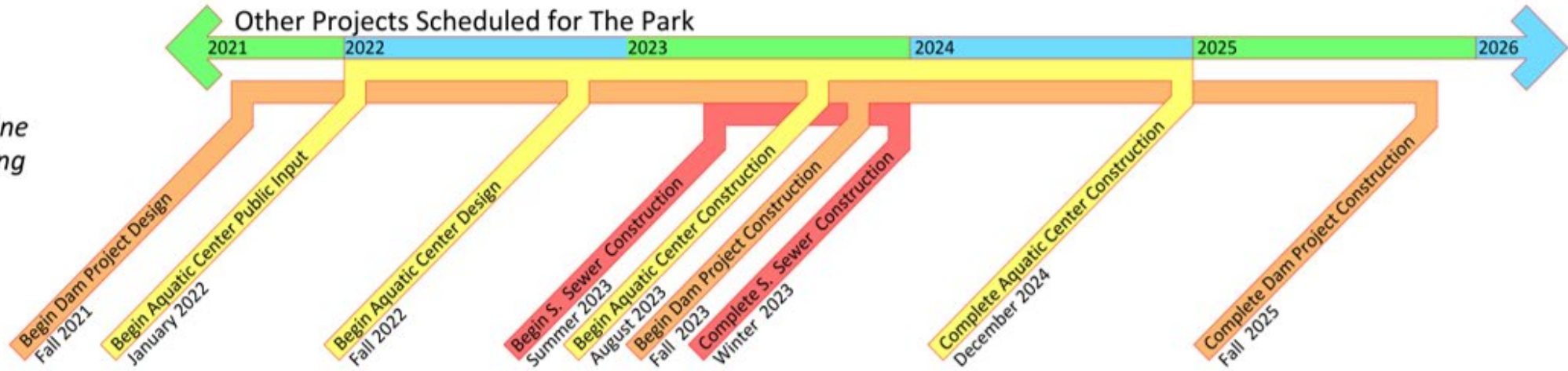


Phase the Work & Fund the Projects

Next Steps



*Note:
This is an estimated timeline
based on current scheduling
and is subject to change.*



Other Projects Scheduled for the Park





Comments & Questions - Use the chat or raise your hand feature to ask questions and provide comments.



Visit the Project Website

- <https://www.austintexas.gov/sheffieldNWpark>

Speak Up Austin!

- Share your stories about the Park online:
<https://www.speakupaustin.org/sheffieldnwpark>

Contact the City

- Park Vision Plan – **Darcy Nuffer** - darcy.nuffer@austintexas.gov
- Aquatic Center Renovation – **Patrick Beyer** - patrick.beyer@austintexas.gov
- Dam Renovation Project – **Annabell Ulary** - annabell.ulary@austintexas.gov

Thank You For Being Involved in Your Park – We Want to Hear From You!

