



**HOUSING &
PLANNING**

Results from the 2020 Census: Takeaways and Trends for Central Texas

Imagine Austin

April 13, 2022

Presentation to the Imagine Austin Speaker Series

by Dr. Lila Valencia

Content

- Why the Census Matters
- Population Growth
- Austin's Unique Diversity
- Areas of Growth & Change
- Evaluating Census Results
- Growth Gains & Growing Pains

Why the Census Matters



Census Matters

- Reapportionment of U.S. House of Representatives
- Redraw or redistrict congressional, legislative, and local boundaries to account for demographic shifts
 - City of Austin Council Districts
 - Travis County Commissioners Courts
- \$1.5 Trillion of federal funds are allocated to state and local communities based on Census data.



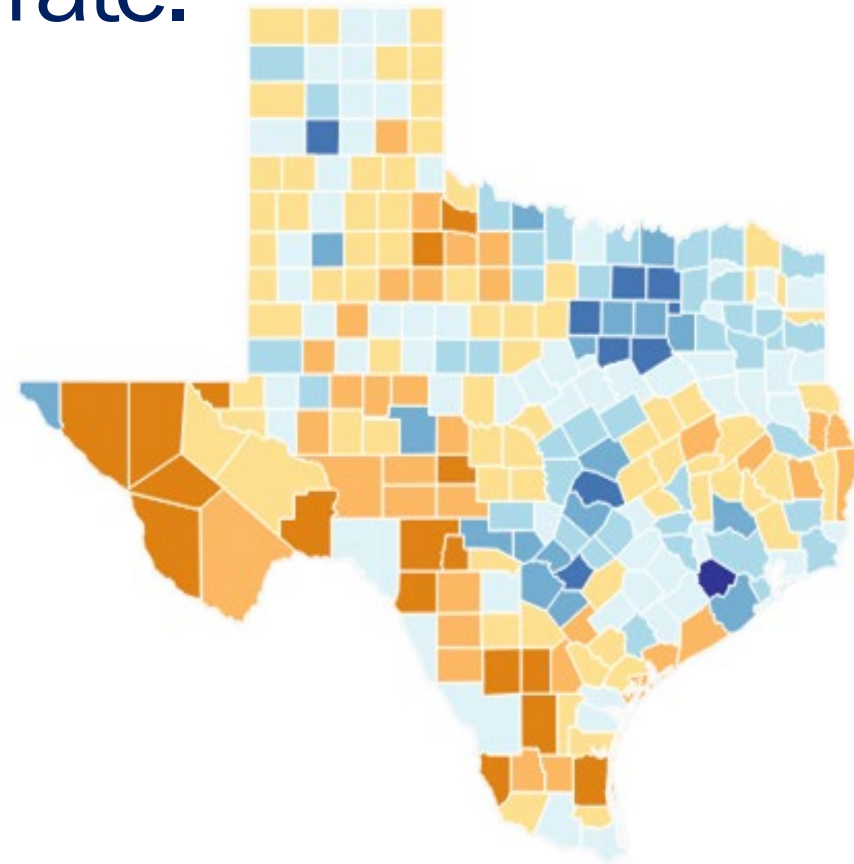
Complete Count Committee

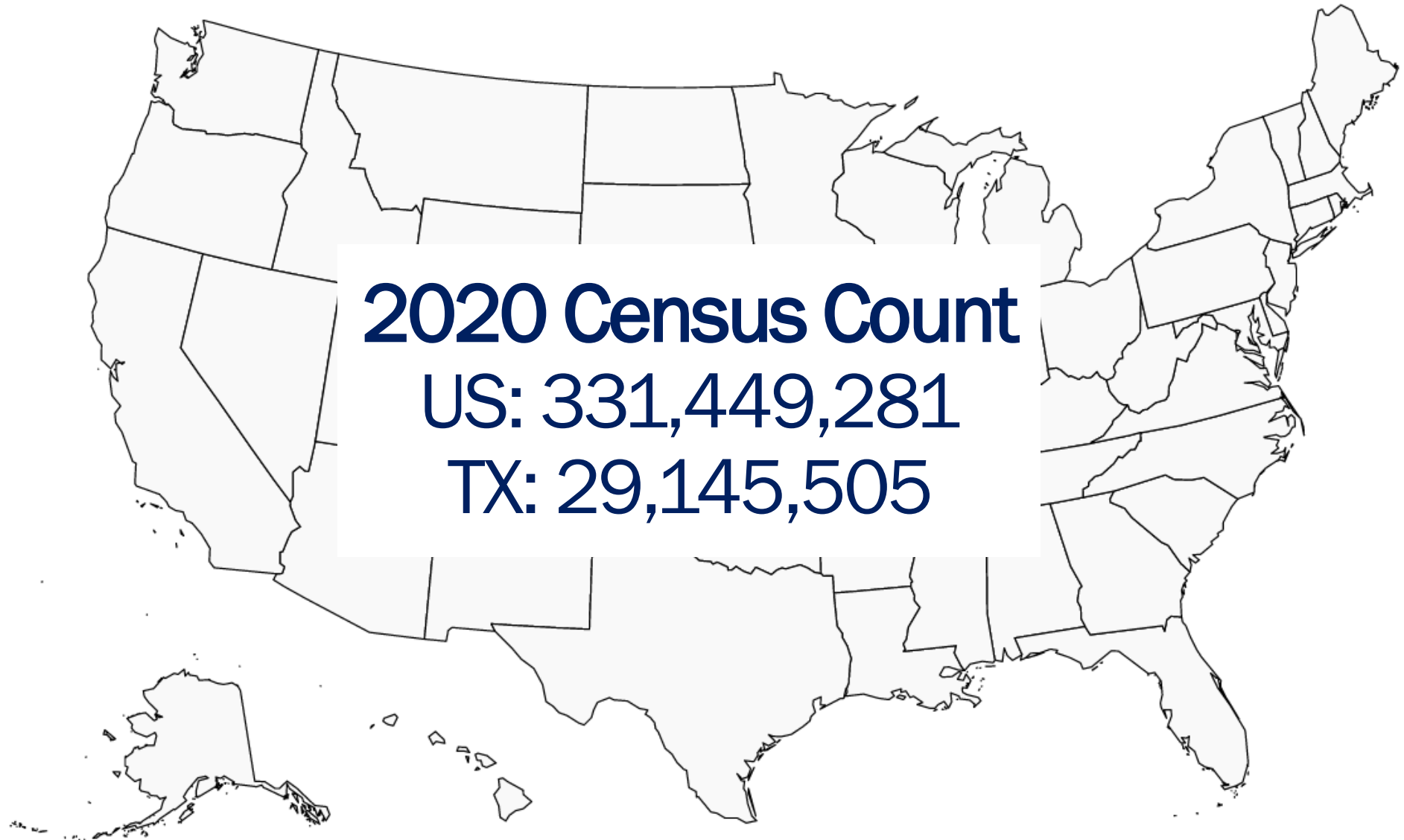
Ascension Health	City of Austin	Huston-Tillotson University	St. Edward's University
Austin American Statesman	City of Manor	Interfaith Action of Central Texas	Telemundo
Austin Asian Chamber	City of Pflugerville	Jolt Texas	The University of Texas at Austin
Austin Community College	David Chapel Missionary Baptist Church	La Prensa Austin	Texas Counts
Austin ISD	Deeds Not Words	Latino Healthcare Forum	Texas Demographic Center
Austin Tech Alliance	Del Valle ISD	League of Women Voters	Travis County
Capital Metro	Every Texan	Mobile Loaves and Fishes	United Way of Greater Austin
Catholic Diocese of Austin	Foundation Communities	One Voice	Univision
Central Health	Go Austin / Vamos Austin	St. David's Foundation	Workers Defense Project



Austin-Travis County only large TX city-county pair to surpass 2010 response rate.

Geography	2010	2020
U.S.	66.5%	67.0%
TX	64.4%	62.8%
Austin	66.7%	67.3%
Travis Co	66.2%	67.3%
Dallas	61.9%	59.7%
Dallas Co	64.6%	63.9%
San Antonio	67.2%	65.6%
Bexar Co	66.8%	67.2%
Houston	63.5%	58.9%
Harris Co	65.1%	62.9%
El Paso	72.6%	68.2%
El Paso Co	70.8%	66.8%
Fort Worth	65.8%	64.5%
Tarrant Co	66.8%	68.9%

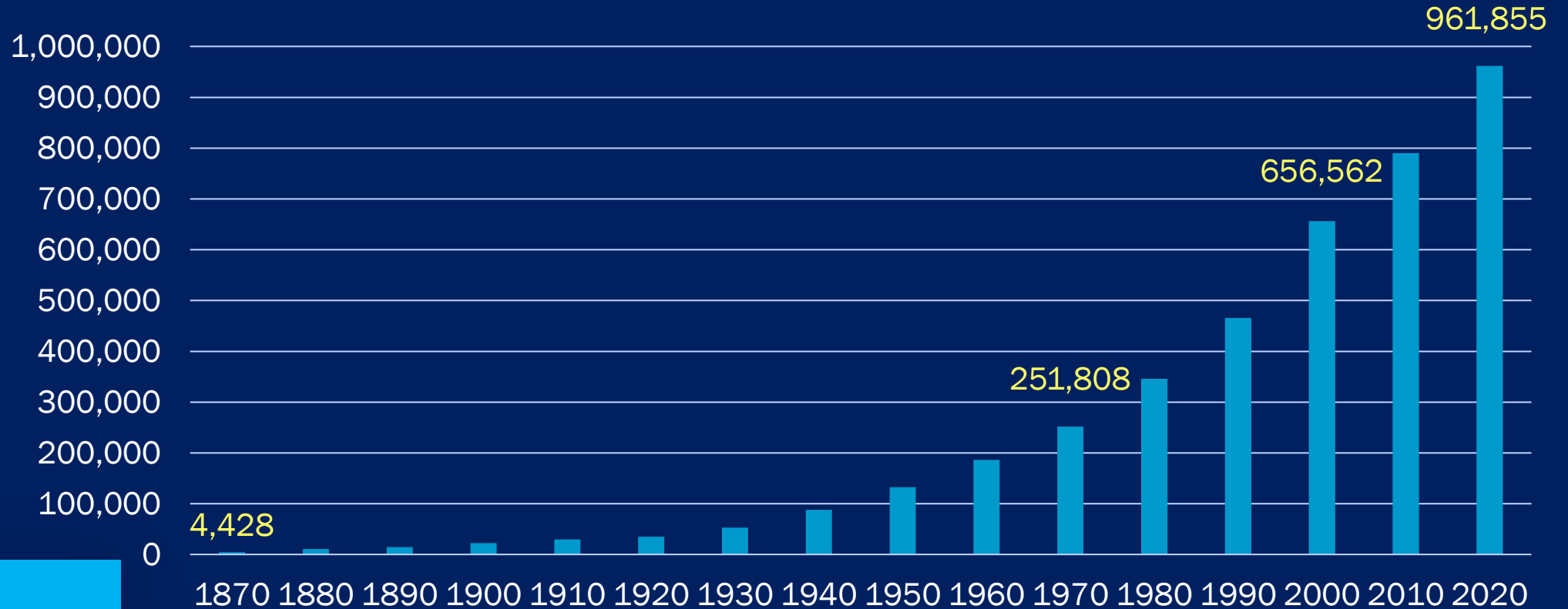




Population Growth



Austin Population Growth, 1870 to 2020



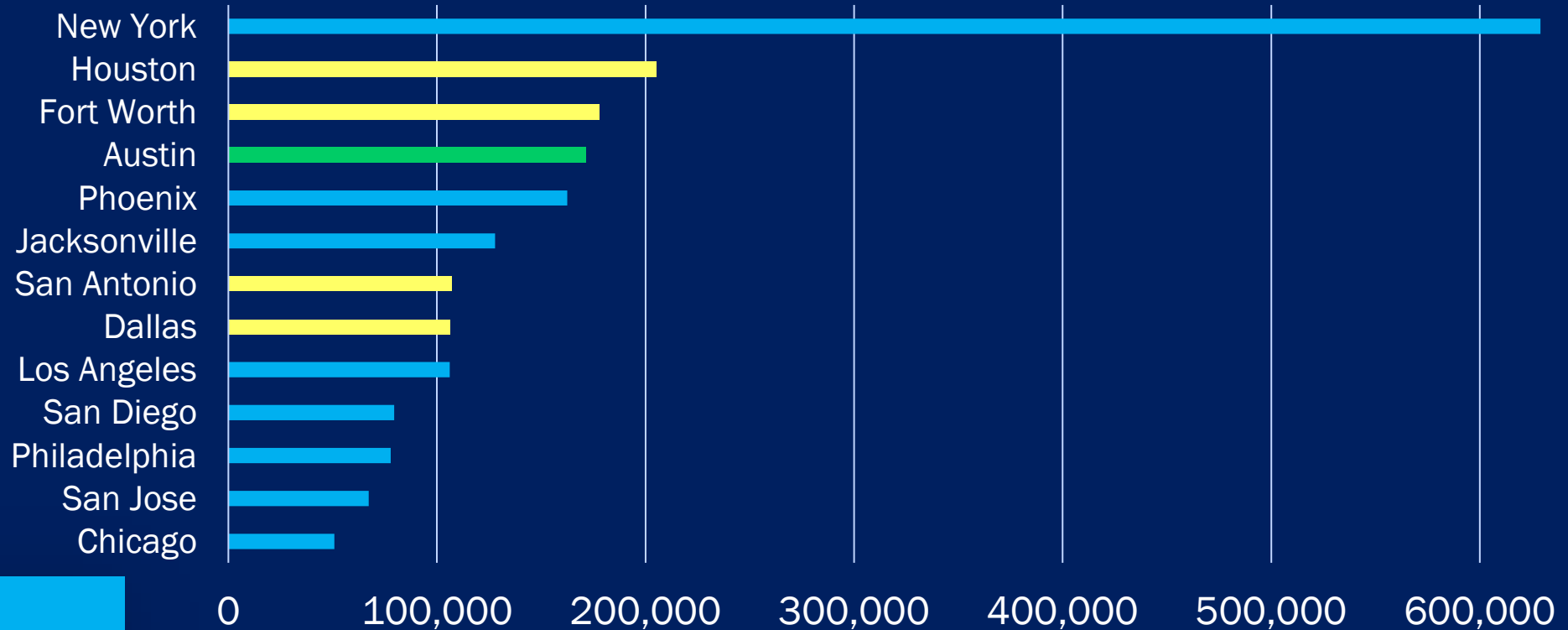
**.961
million**

Source: U.S. Census Bureau, Decennial Censuses 1870 - 2020.



Austin is the 11th largest city in the country but growth rivals that of the nation's largest cities.

Numeric Change among U.S. Largest Cities, 2010-2020



**171k in
10 yrs**

Source: U.S. Census Bureau, P.L. 94-171 Redistricting Data, 2010 and 2020.



Austin was the fastest-growing large metro in the country every year this decade.

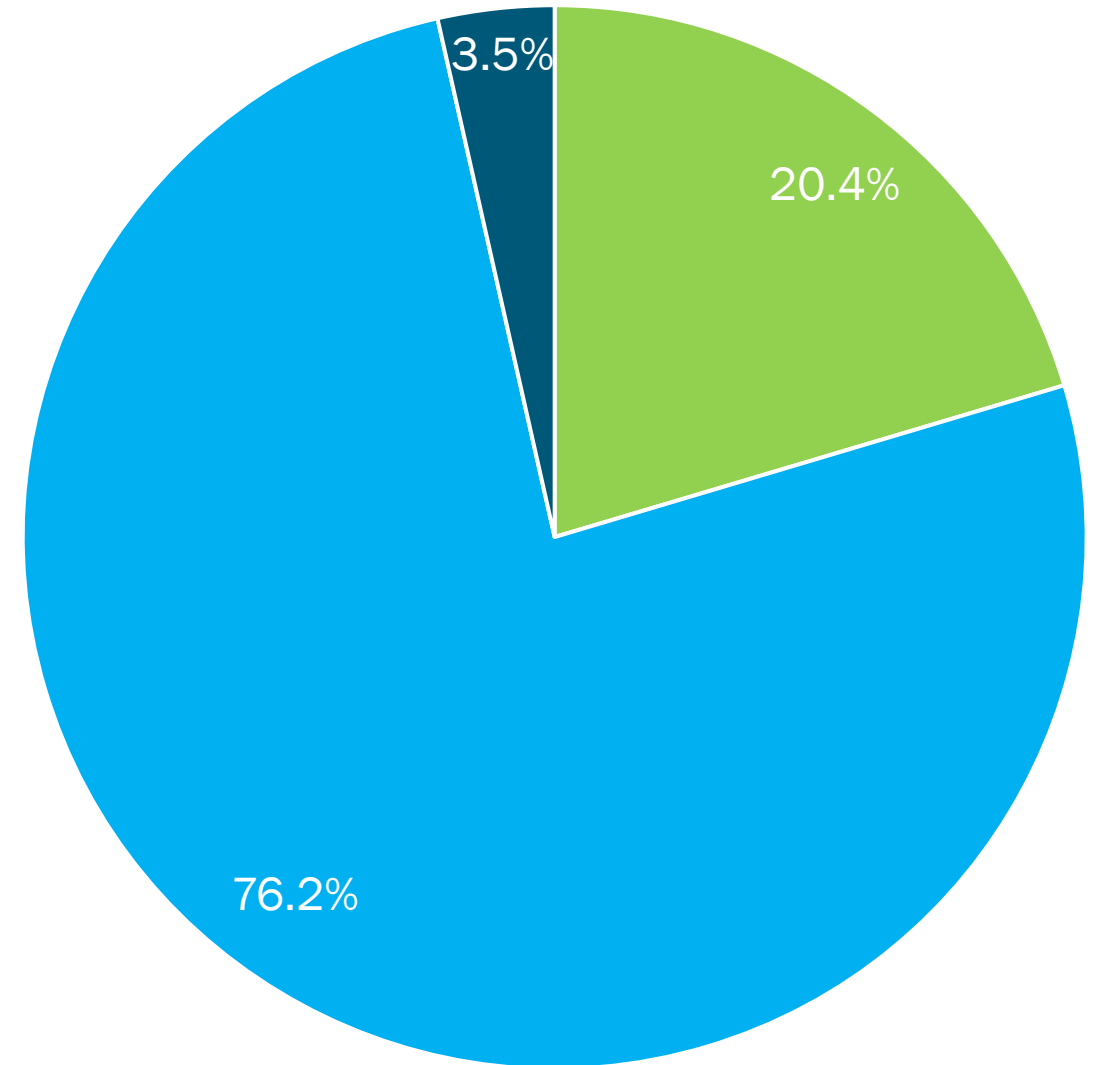
	2020 Population	Numeric Change, 2010-2020	Percent Change, 2010-2020
Austin-Round Rock-Georgetown, TX	2,283,371	567,082	33.0%
Orlando-Kissimmee-Sanford, FL	2,673,376	538,965	25.3%
Raleigh-Cary, NC	1,413,982	283,492	25.1%
Nashville-Davidson-Murfreesboro-Franklin, TN	1,989,519	343,319	20.9%
Houston-The Woodlands-Sugar Land, TX	7,122,240	1,201,824	20.3%
Dallas-Fort Worth-Arlington, TX	7,637,387	1,270,845	20.0%
San Antonio-New Braunfels, TX	2,558,143	415,635	19.4%
Jacksonville, FL	1,605,848	260,252	19.3%
Charlotte-Concord-Gastonia, NC-SC	2,660,329	416,369	18.6%
Seattle-Tacoma-Bellevue, WA	4,018,762	578,953	16.8%

Source: U.S. Census Bureau, 2020 Decennial Census, P.L. 94-171.



Drivers of Growth

- Migration from other parts of Texas and other states made up over 3/4 of the growth in the Austin metro area between April 1, 2020, and July 1, 2021.
- Increased share due to increase in newcomers paired with marked decreases in international migration and increases in deaths, both COVID-19 related.

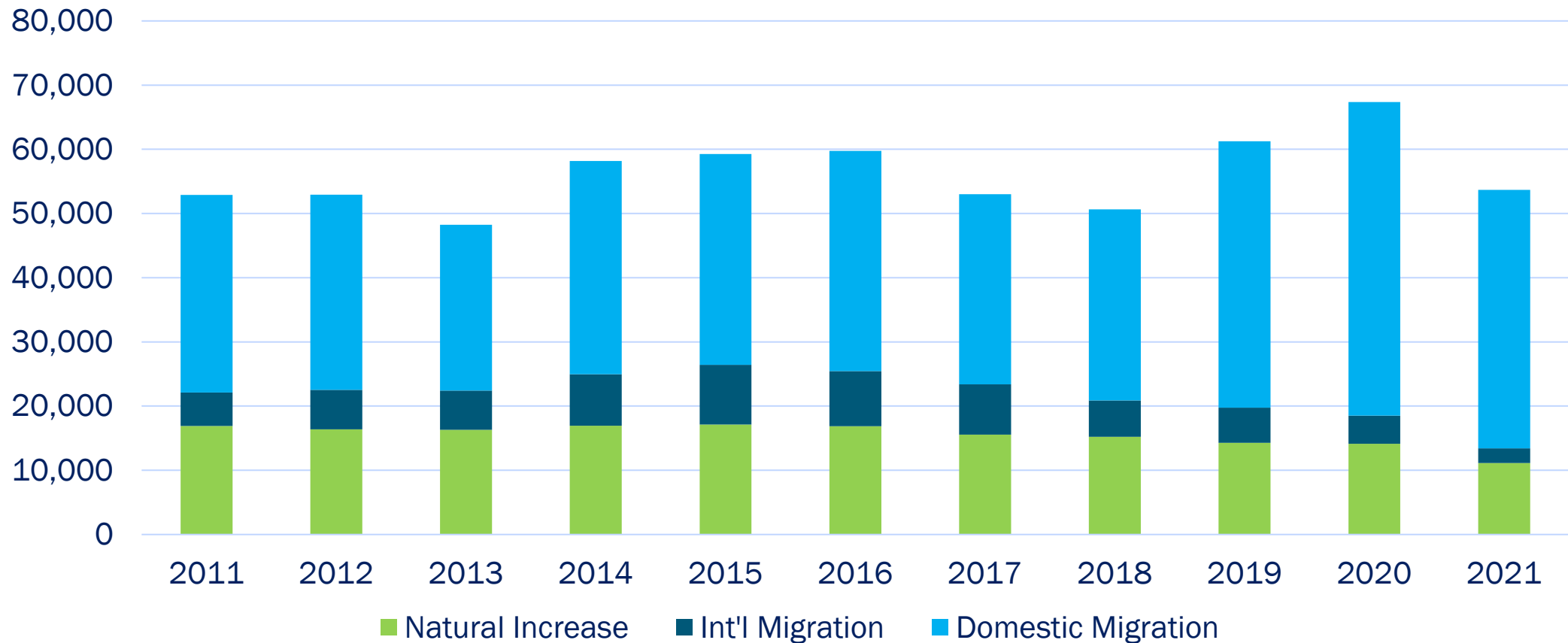


Source: U.S. Census Bureau, Population Estimates Vintage 2021.

■ Natural Increase ■ Domestic Migration ■ International Migration



Components of Population Change, Austin Metro Area



Source: U.S. Census Bureau, Population Estimates.

Austin's Unique Diversity



Race & Ethnicity Questions on the Census

- Separate questions for Ethnicity and Race
- Hispanics can identify as any race
- Write-in fields for race groups

NOTE: Please answer BOTH Question 6 about Hispanic origin and Question 7 about race. For this census, Hispanic origins are not races.

6. Are you of Hispanic, Latino, or Spanish origin?

- No, not of Hispanic, Latino, or Spanish origin
- Yes, Mexican, Mexican Am., Chicano
- Yes, Puerto Rican
- Yes, Cuban
- Yes, another Hispanic, Latino, or Spanish origin – *Print, for example, Salvadoran, Dominican, Colombian, Guatemalan, Spaniard, Ecuadorian, etc.* ↴

7. What is your race?

Mark one or more boxes **AND** print origins.

- White – *Print, for example, German, Irish, English, Italian, Lebanese, Egyptian, etc.* ↴

- Black or African Am. – *Print, for example, African American, Jamaican, Haitian, Nigerian, Ethiopian, Somali, etc.* ↴

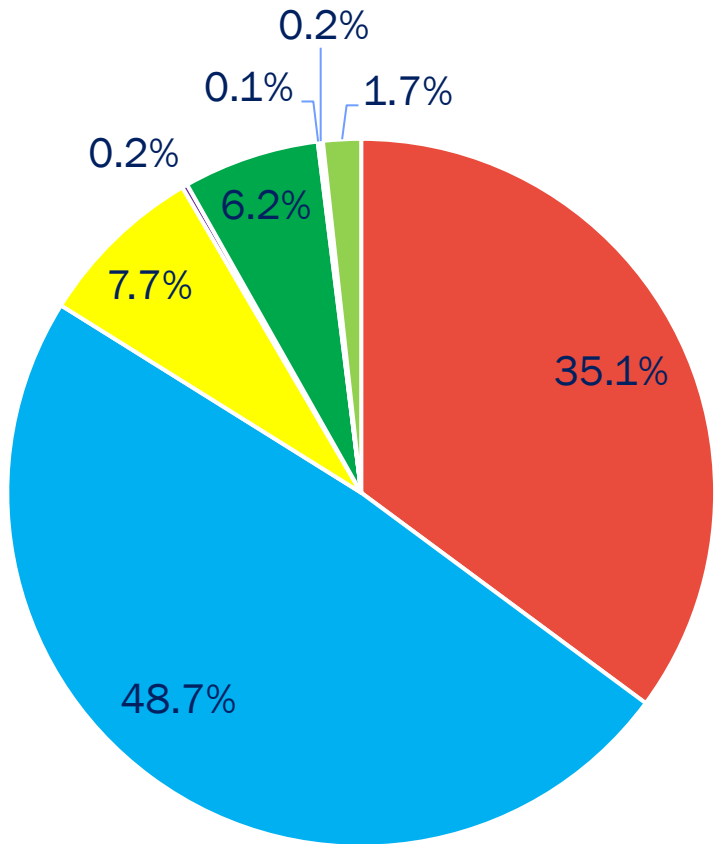
- American Indian or Alaska Native – *Print name of enrolled or principal tribe(s), for example, Navajo Nation, Blackfeet Tribe, Mayan, Aztec, Native Village of Barrow Inupiat Traditional Government, Nome Eskimo Community, etc.* ↴

- | | | |
|---|--|--|
| <input type="checkbox"/> Chinese | <input type="checkbox"/> Vietnamese | <input type="checkbox"/> Native Hawaiian |
| <input type="checkbox"/> Filipino | <input type="checkbox"/> Korean | <input type="checkbox"/> Samoan |
| <input type="checkbox"/> Asian Indian | <input type="checkbox"/> Japanese | <input type="checkbox"/> Chamorro |
| <input type="checkbox"/> Other Asian – <i>Print, for example, Pakistani, Cambodian, Hmong, etc.</i> ↴ | <input type="checkbox"/> Other Pacific Islander – <i>Print, for example, Tongan, Fijian, Marshallese, etc.</i> ↴ | |

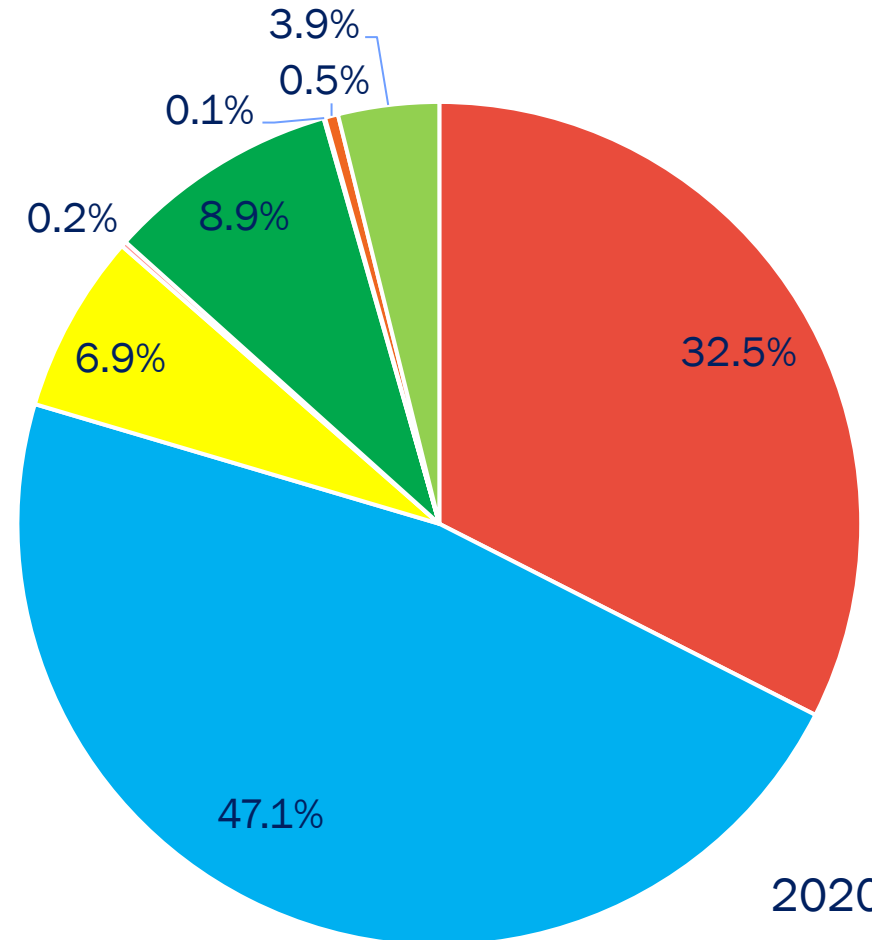
- Some other race – *Print race or origin.* ↴



Austin Race/Ethnicity Composition, 2010 & 2020



2010



2020



Change in Austin's Racial-Ethnic Composition, 2010 to 2020

40% Austin vs 5% TX, US

More than doubled

Over 1 in 5

50% of TX, US growth

<1% of TX growth

NH White population driving growth in Austin.

Fastest-growing race groups: **Of Another Race and Multiracial**

Asian population fastest-growing single race group

Hispanic population contributed 20% of total growth last decade

Black population also grew, but at slower rate



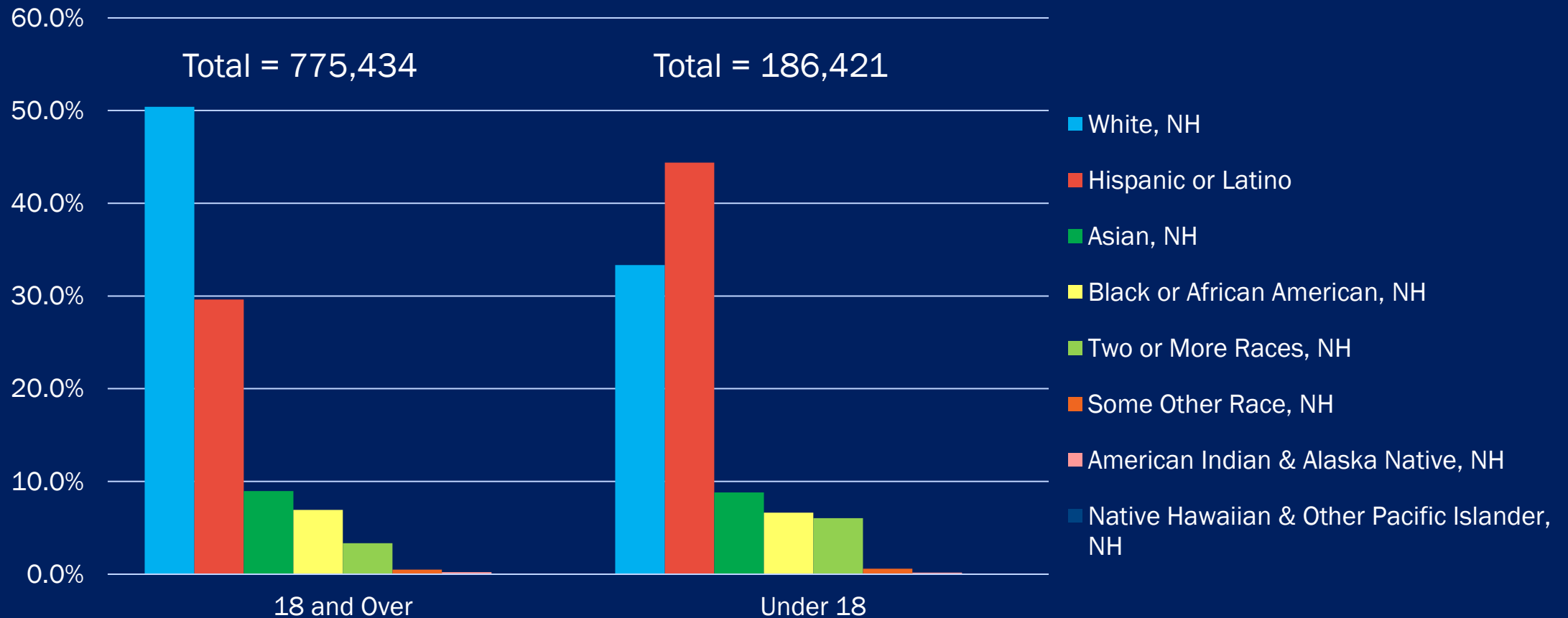
Change in Austin’s Racial-Ethnic Composition, 2010 to 2020

	2010	2020	Percent of Total, 2010	Percent of Total, 2020	Numeric Change	Percent Change	Percent of Total Change
Hispanic or Latino	277,707	312,448	35.1%	32.5%	34,741	12.5%	20.3%
American Indian & Alaska Native, NH	1,967	2,002	0.2%	0.2%	35	1.8%	0.0%
Asian, NH	49,159	85,853	6.2%	8.9%	36,694	74.6%	21.4%
Native Hawaiian & Other Pacific Islander, NH	401	528	0.1%	0.1%	127	31.7%	0.1%
Black or African American, NH	60,760	66,002	7.7%	6.9%	5,242	8.6%	3.1%
Some other race, NH	1,448	4,841	0.2%	0.5%	3,393	234.3%	2.0%
Two or more races, NH	13,677	37,187	1.7%	3.9%	23,510	171.9%	13.7%
White, NH	385,271	452,994	48.7%	47.1%	67,723	17.6%	39.5%
Total	790,390	961,855	100.0%	100.0%	171,465	21.7%	100.0%

Source: U.S. Census Bureau, Decennial Census 2010, 2020; Note: red text denotes decrease since 2010



Larger adult than child population, but the youngest Austinites are more diverse.

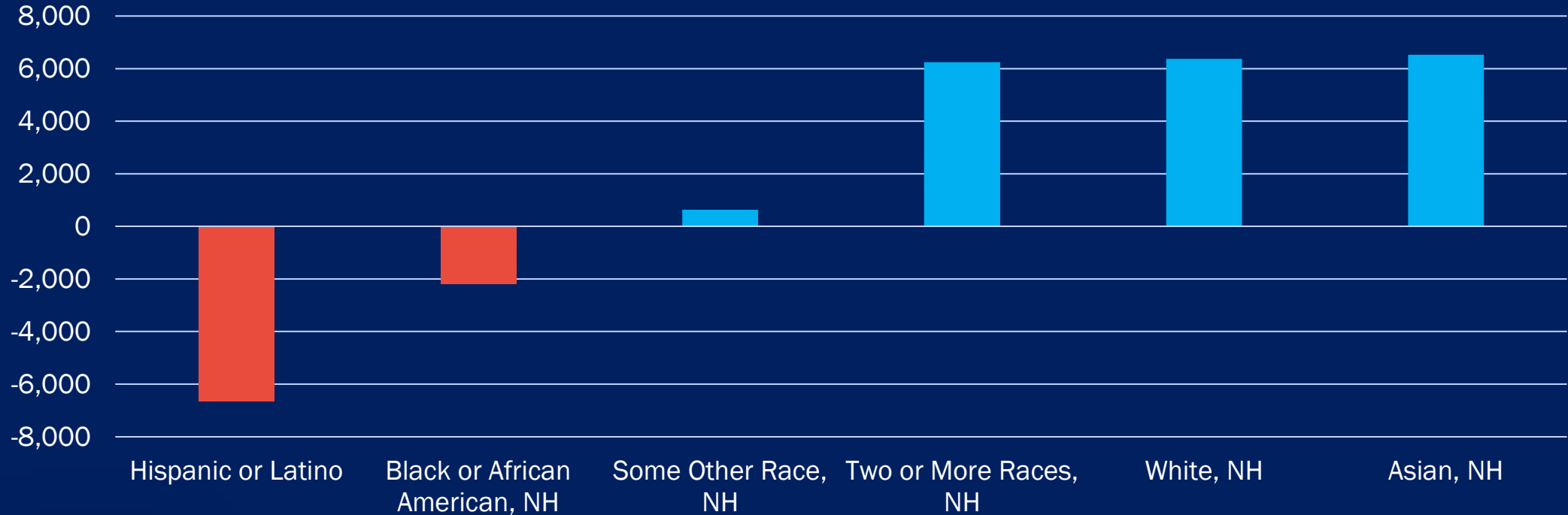


Source: U.S. Census Bureau, 2020 Decennial Census, P.L. 94-171 File



Despite growth in the child population, fewer Latino and Black children in Austin.

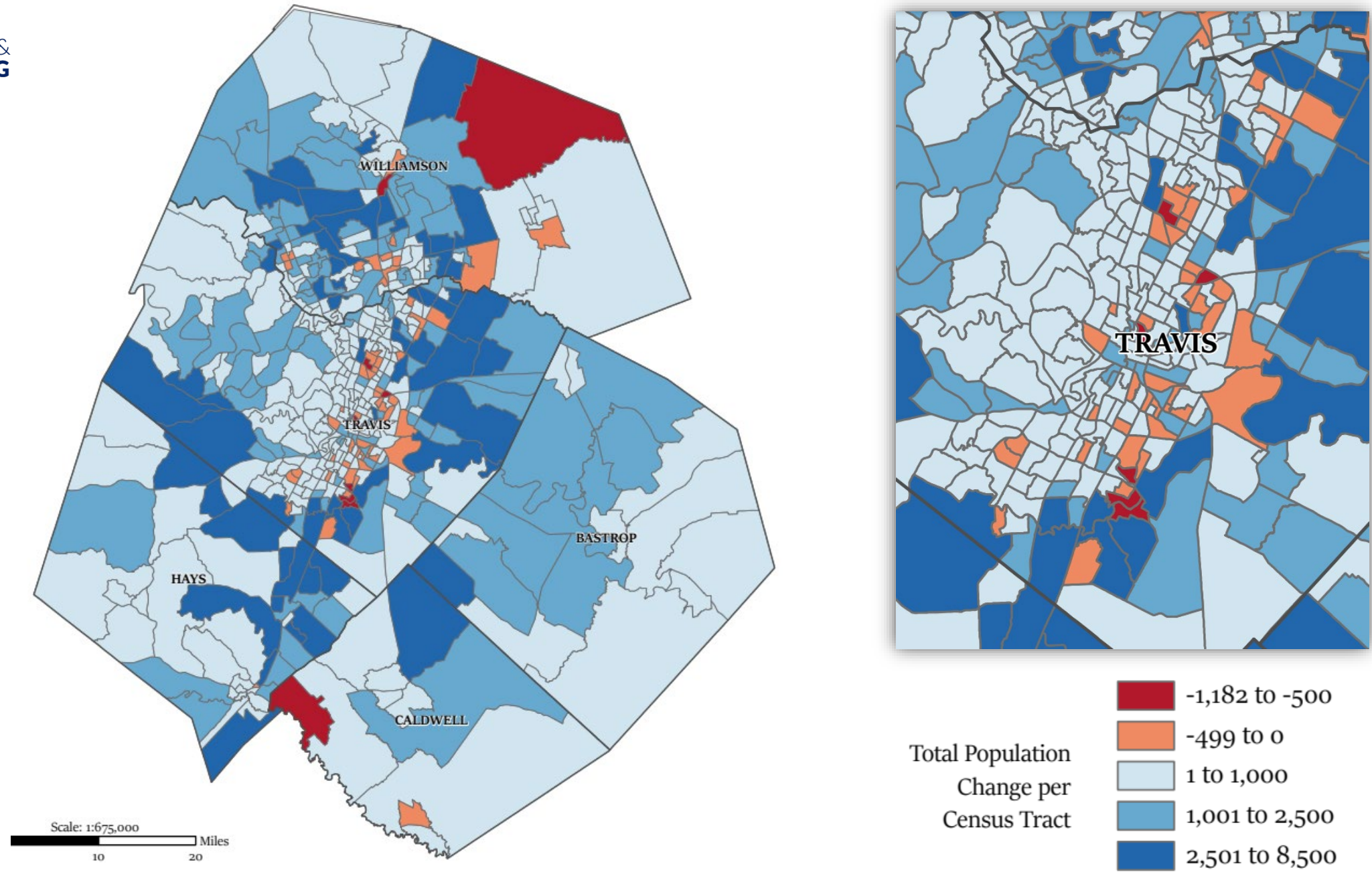
Numeric Change in the Child Population, 2010-2020



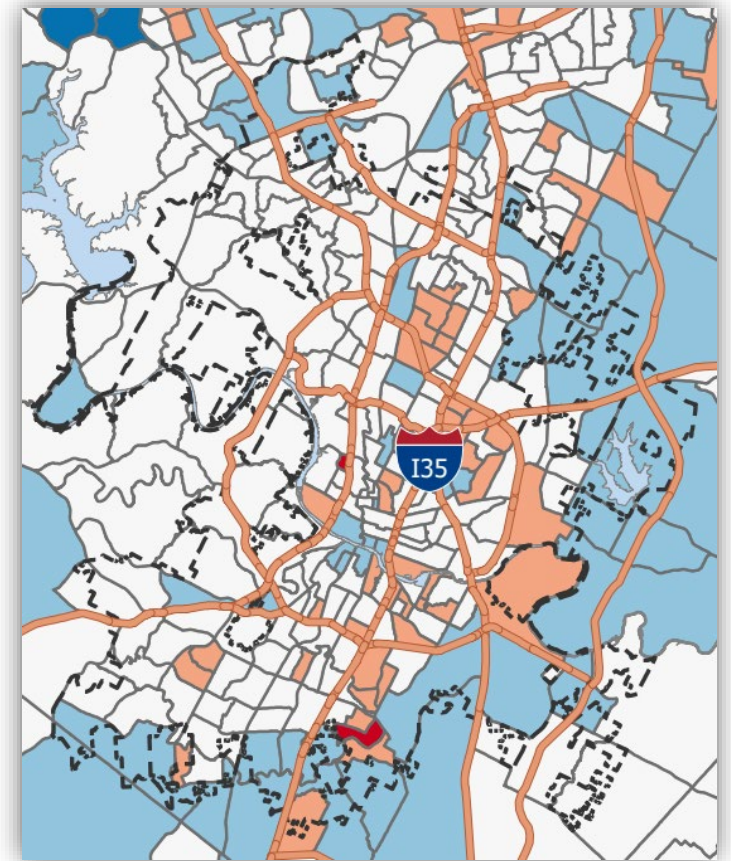
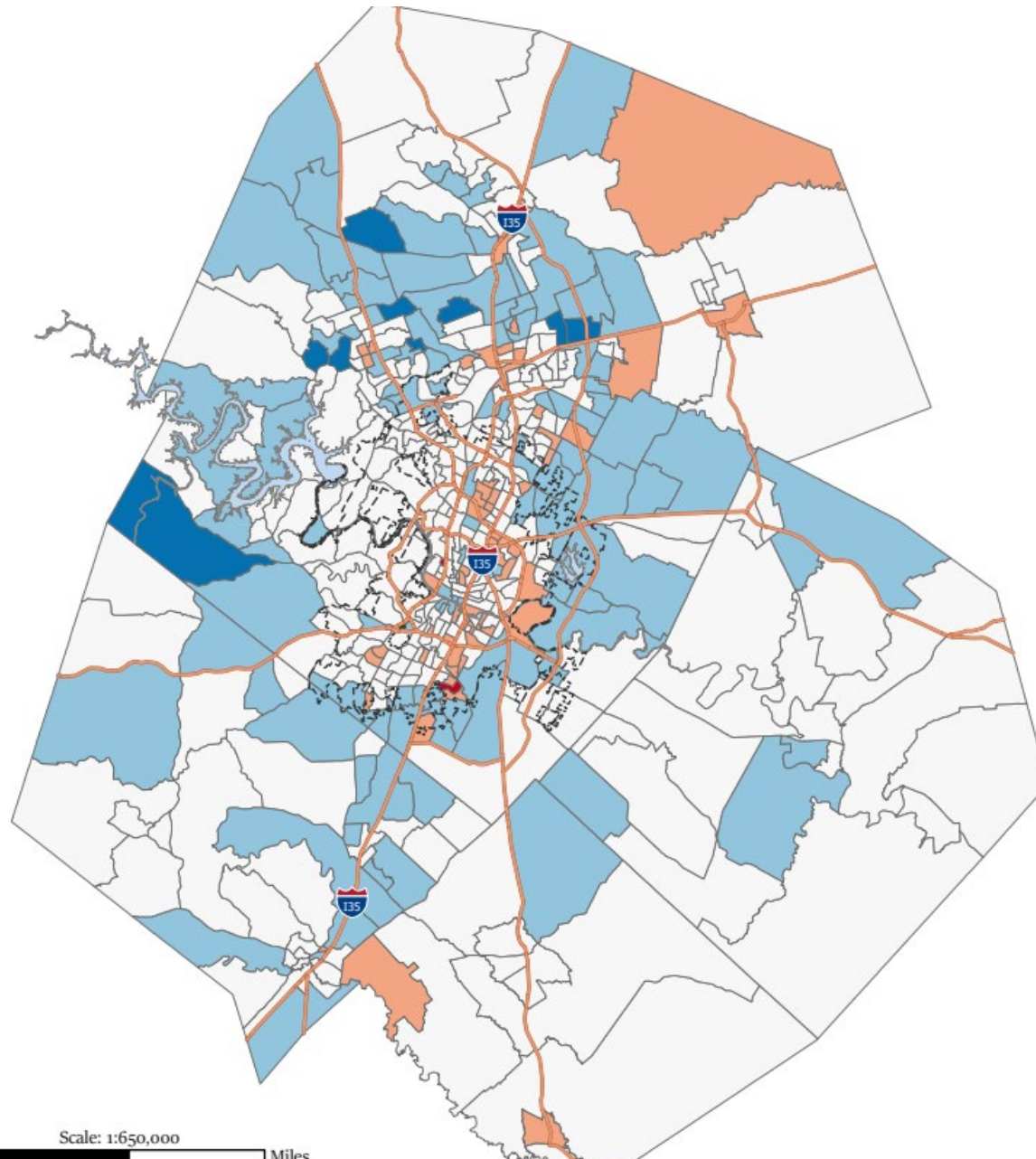
~11k in 10 yrs

Source: U.S. Census Bureau, P.L. 94-171 Redistricting Data, 2010 and 2020.





Areas of Growth & Change



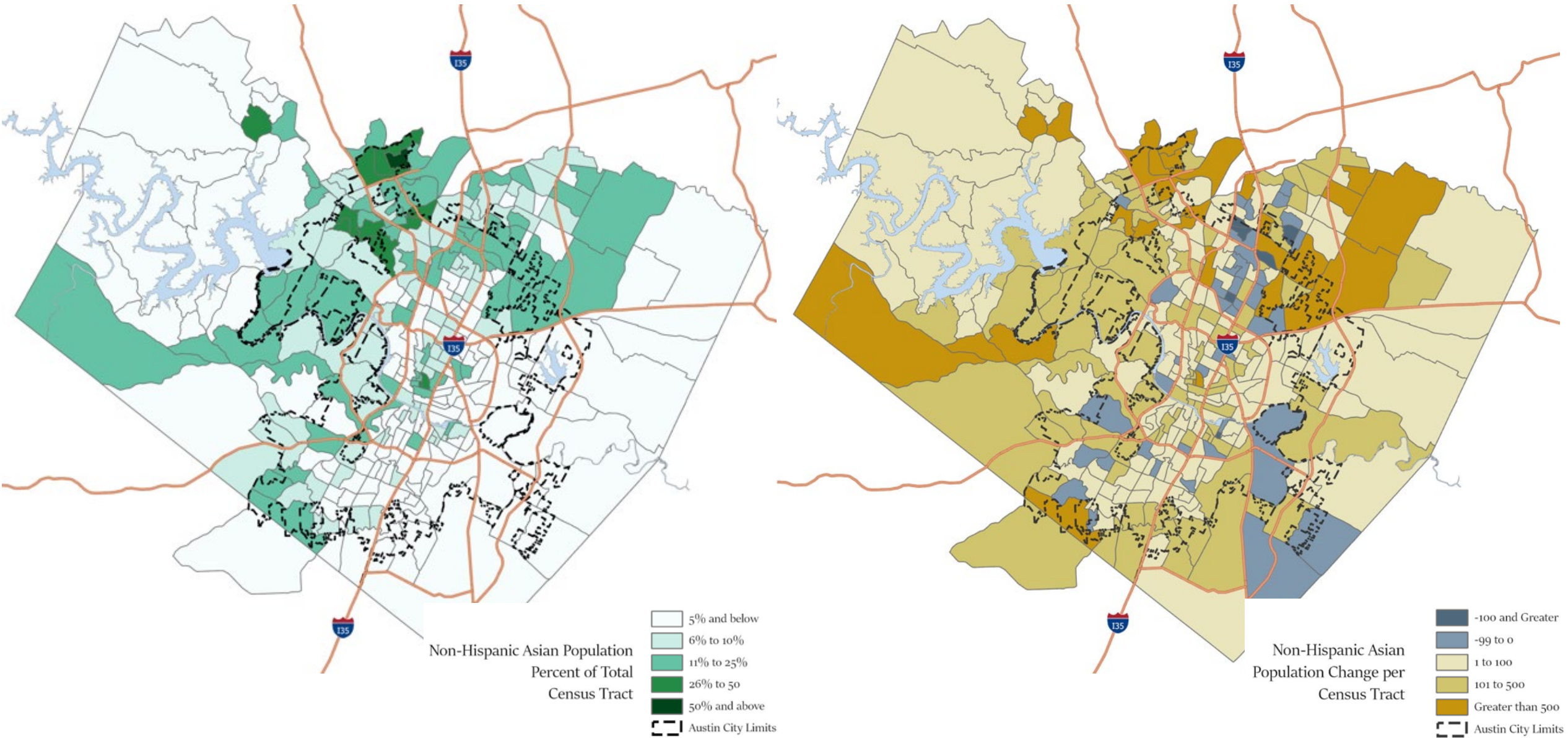
Source: U.S. Census Bureau, P.L. 94-171 Redistricting Data, 2020.

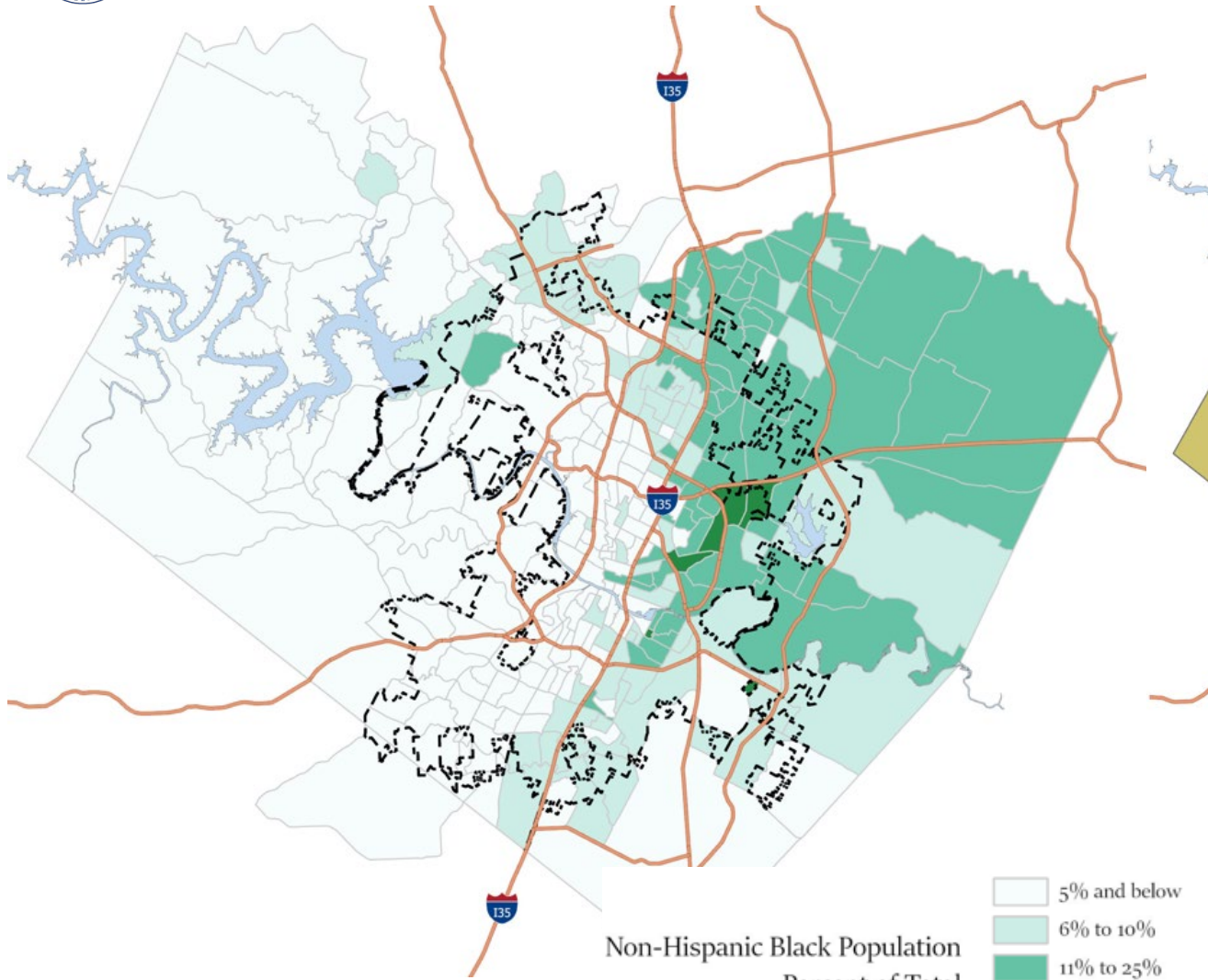


Total Percent
Population Change per
Census Tract

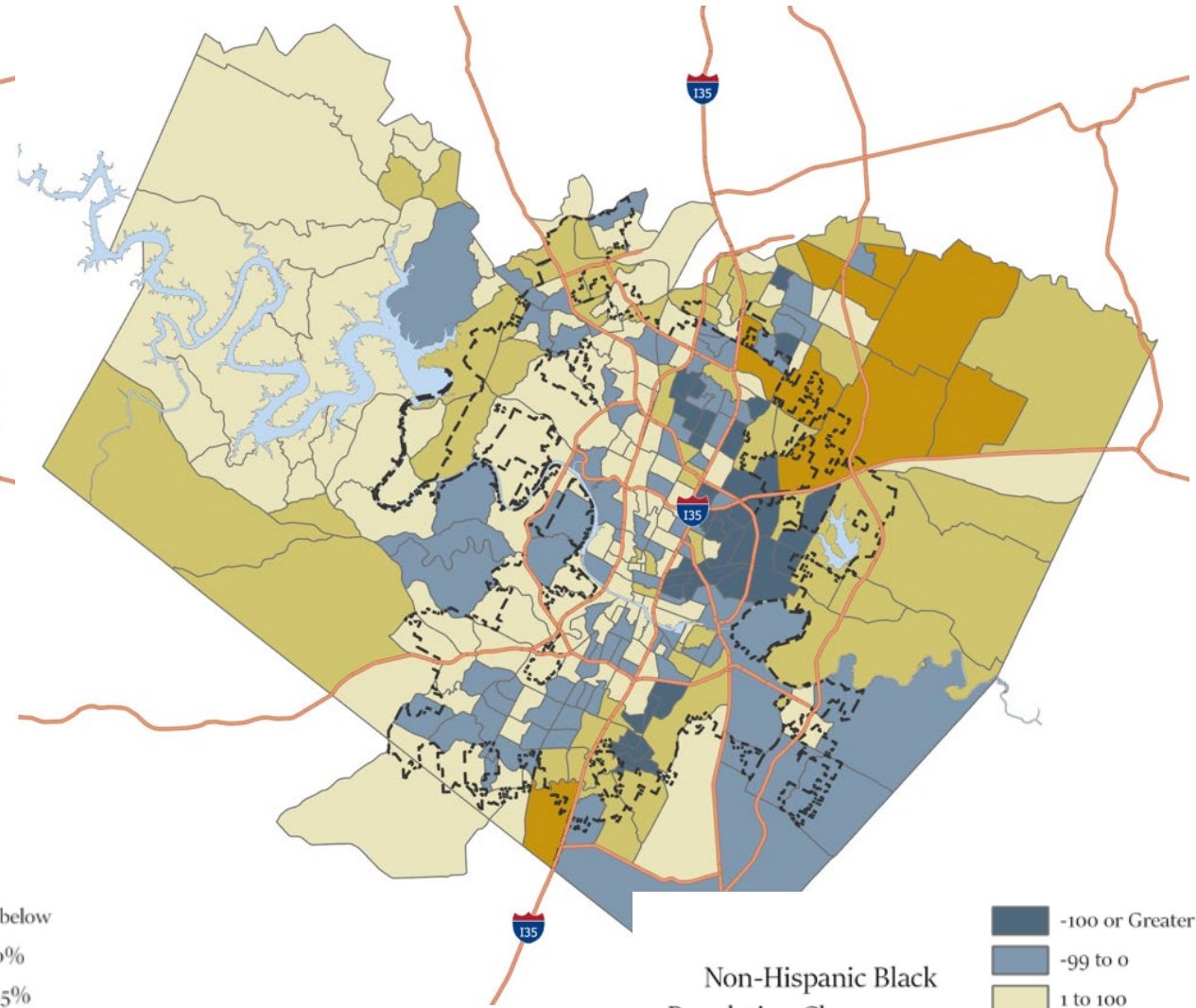
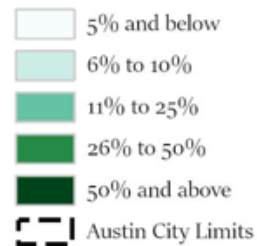
-  -25% and below
-  -24% to 0%
-  1% to 50%
-  51% to 500%
-  501% and above
-  Austin City Limits

Source: U.S. Census Bureau, P.L. 94-171 Redistricting Data, 2010, 2020.



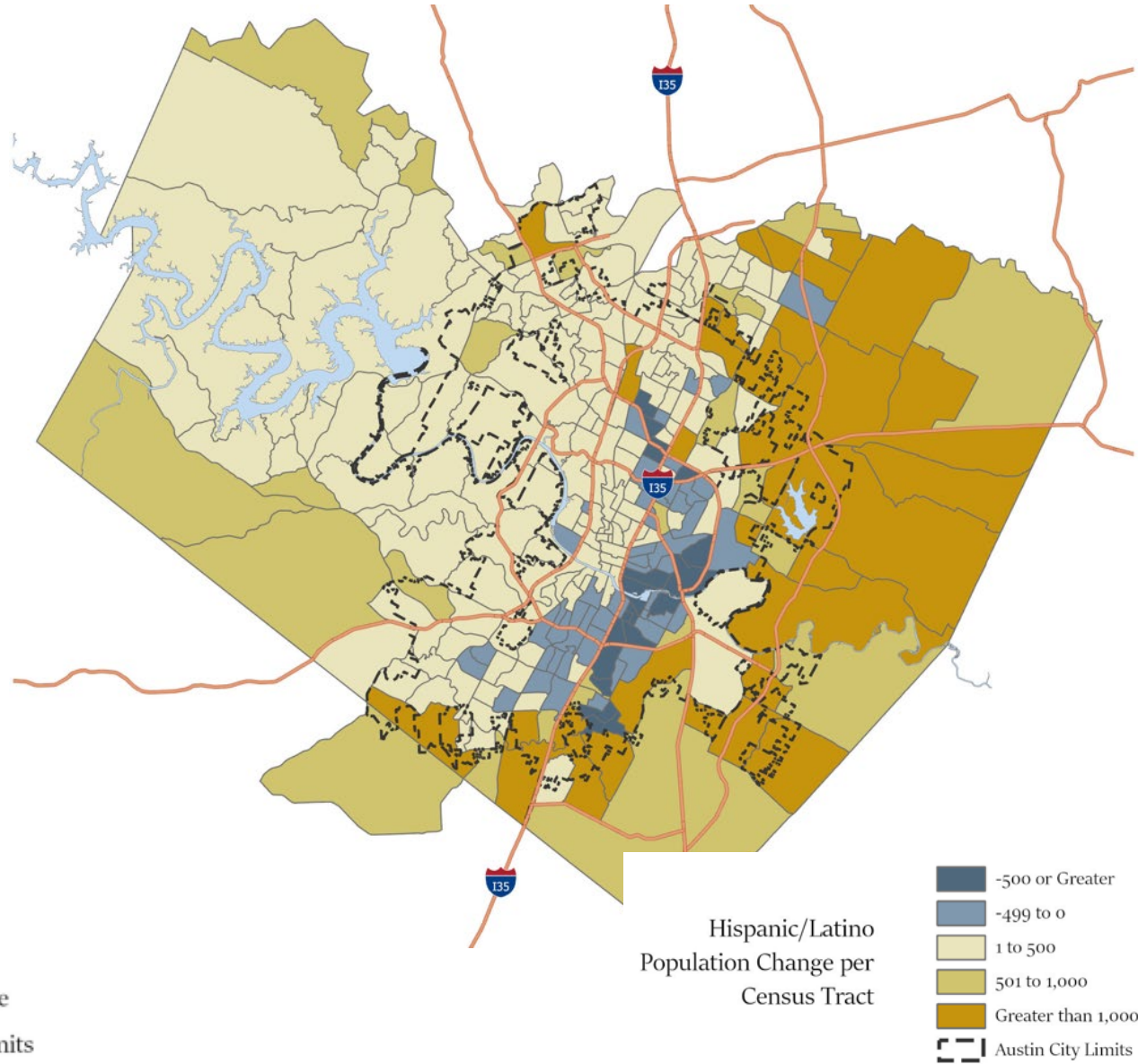
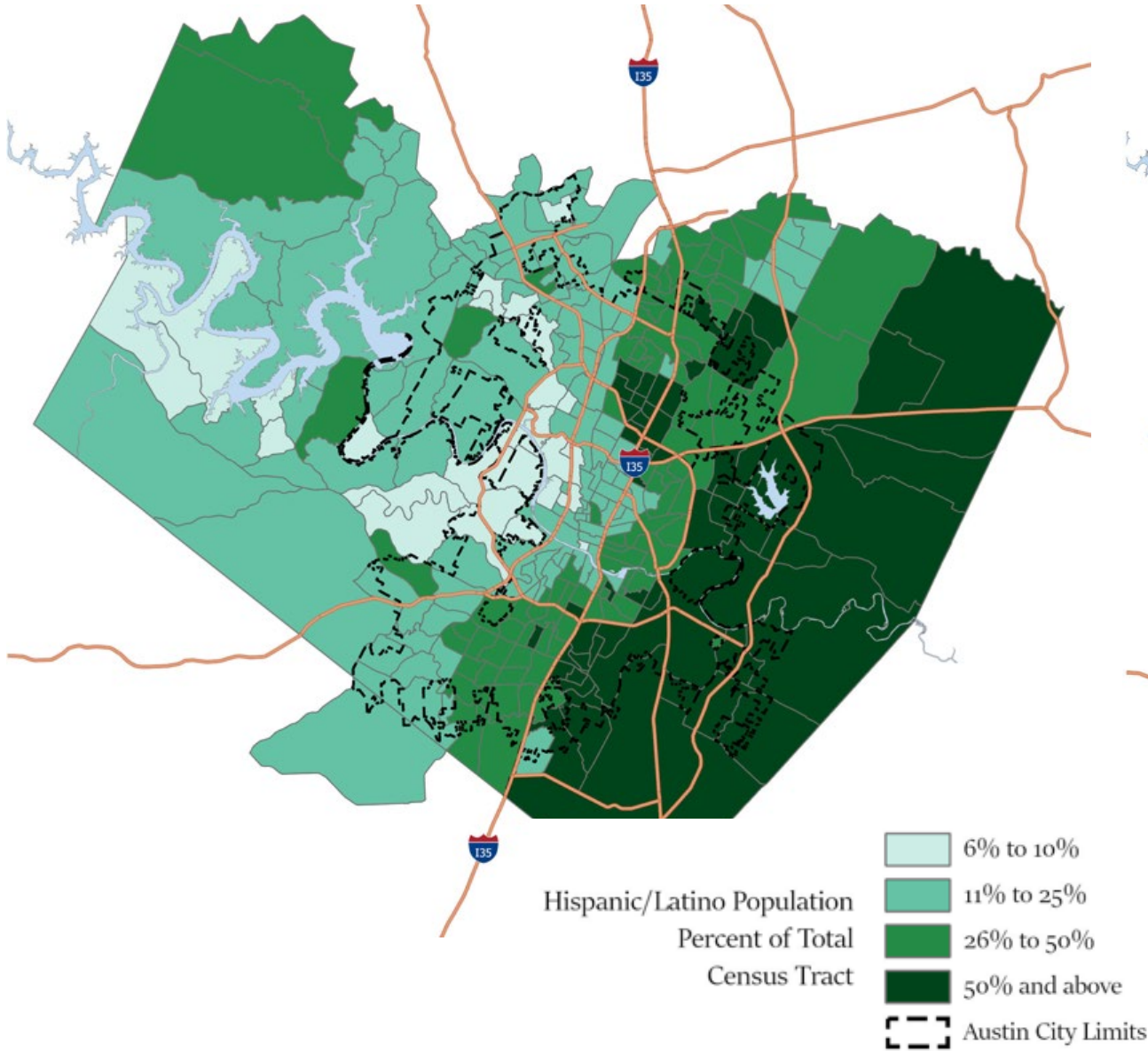


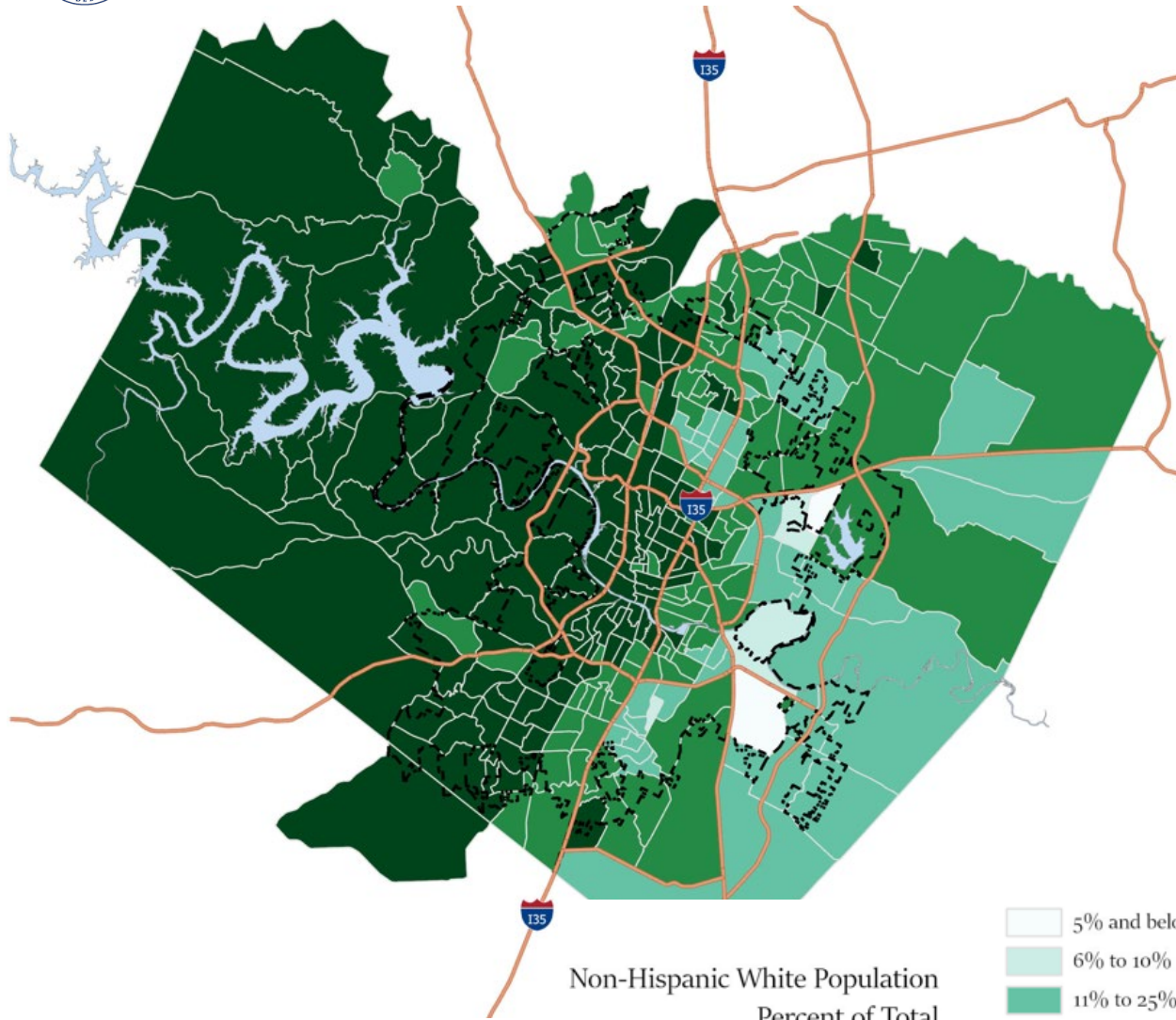
Non-Hispanic Black Population
Percent of Total
Census Tract



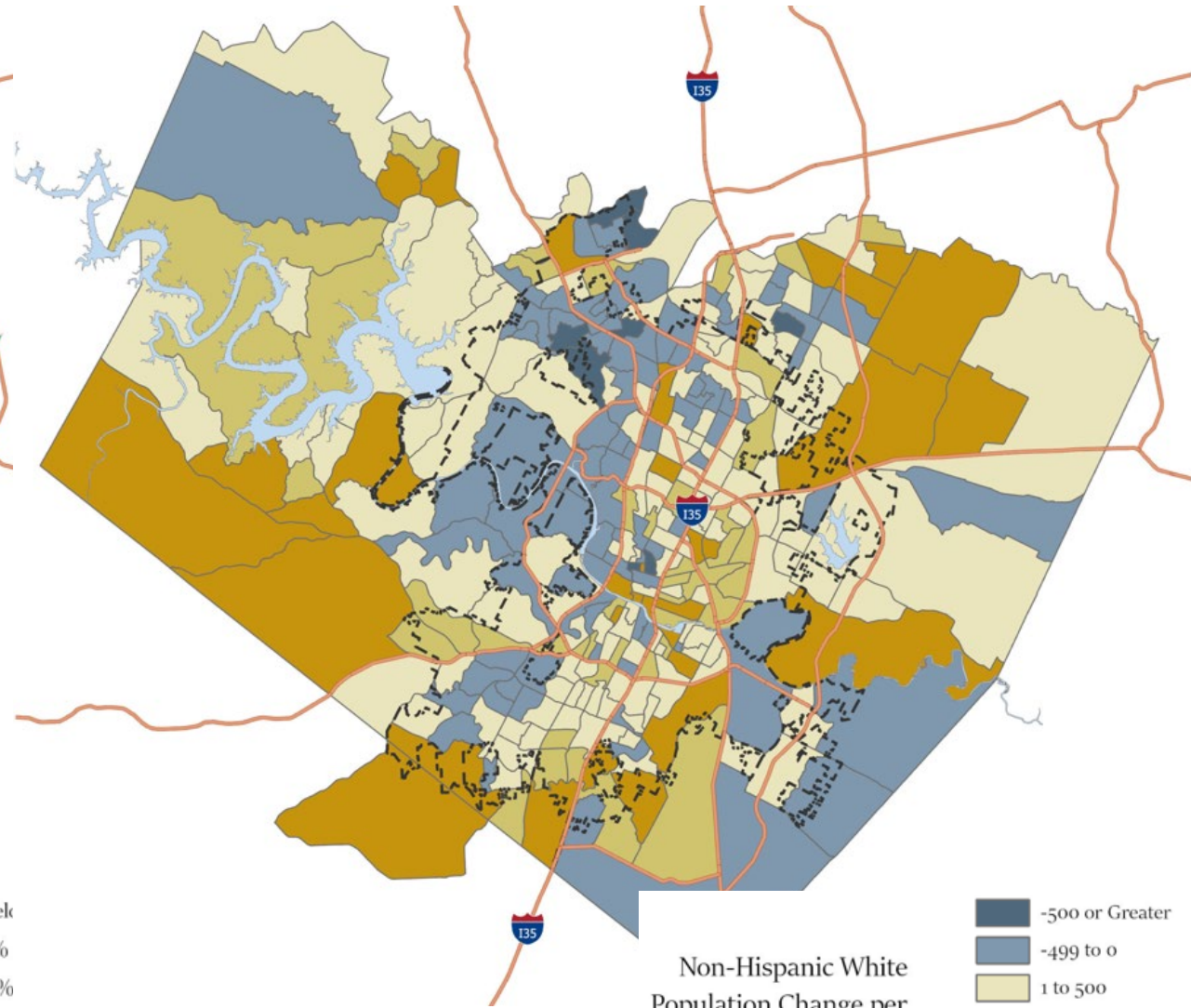
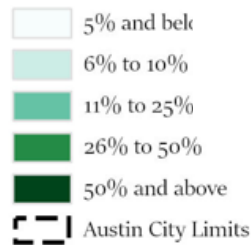
Non-Hispanic Black
Population Change per
Census Tract







Non-Hispanic White Population
Percent of Total
Census Tract



Non-Hispanic White
Population Change per
Census Tract



Evaluating Census Results



Census Evaluation Metrics

- Census Bureau's Demographic Analysis and Post-Enumeration Survey (PES) assess net coverage error and the over and under counts of the population
- Studies found a net undercount of 782k people or -0.24% of the total U.S. population



UNDERCOUNTED Populations

- American Indian or AK native populations living on reservations (-5.64%)
- Latino/Hispanic population (-4.99%)*
- Population who reported another race (-4.34%)*
- Black people (-3.30%)
- Children, especially those ages 0 to 4 (-2.79%)*
- Males aged 30 to 49 (-3.05%)
- People who rent their home (-4.51%)

Source: U.S. Census Bureau, Post Enumeration Survey and Demographic Analysis Results.

Note: *denotes significant increase from 2010



OVERCOUNTED Populations

- White people (1.64%)*
- Asian population (2.62%)*
- Females 50 and older (2.63%)



Census Evaluation Metrics

- CB releasing estimates of under/overcount for states this summer
- CB will not be releasing undercount rates for counties or smaller geographies
- The City of Austin is submitting a Count Question Resolution request for review of the 2020 Census housing unit count

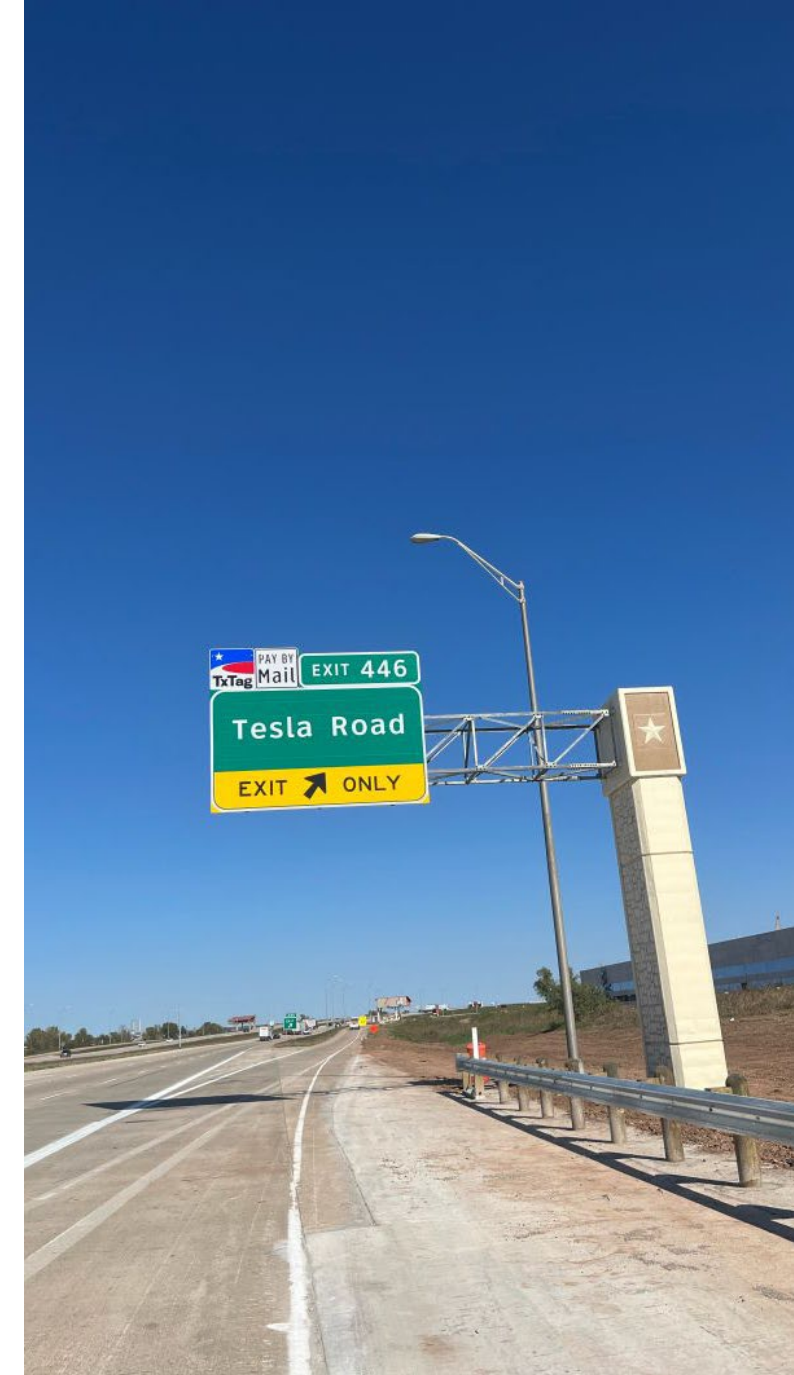
Growth Gains and Growing Pains



Growth Gains

~47 people added per day to Austin's population this decade; ~189 daily increase to the metro area.

- Population growth
- Job growth
- Employment rate





Growing Pains

~47 people added per day to Austin's population this decade; ~189 daily increase to the metro area.

- Median home prices up 154% in last 10 years.
 - \$565,000 median home price (Feb 2022)
- Median rents increased 49% since 2010
 - \$1,609/month; \$2,018 for 2 BR (Feb 2022)
- Mean commute times increased 12% since 2010.
 - 42% of workers commuting for 30 minutes plus
 - 8% with commutes of over 1 hour
 - Disproportionately felt by those displaced





Concurrencies

- Strong growth amidst concerns of displacement
- Increased racial diversity paired with declines among Black and Latino children
- Construction and development along with low housing inventories
- Transit and transportation planning
- Access to schools and health care
- Pressures on utility infrastructure
- Workforce dynamics

Source: U.S. Census Bureau, American Community Survey 2019 1-Year Estimates; ABoR, 2022; Apartments.com 2022



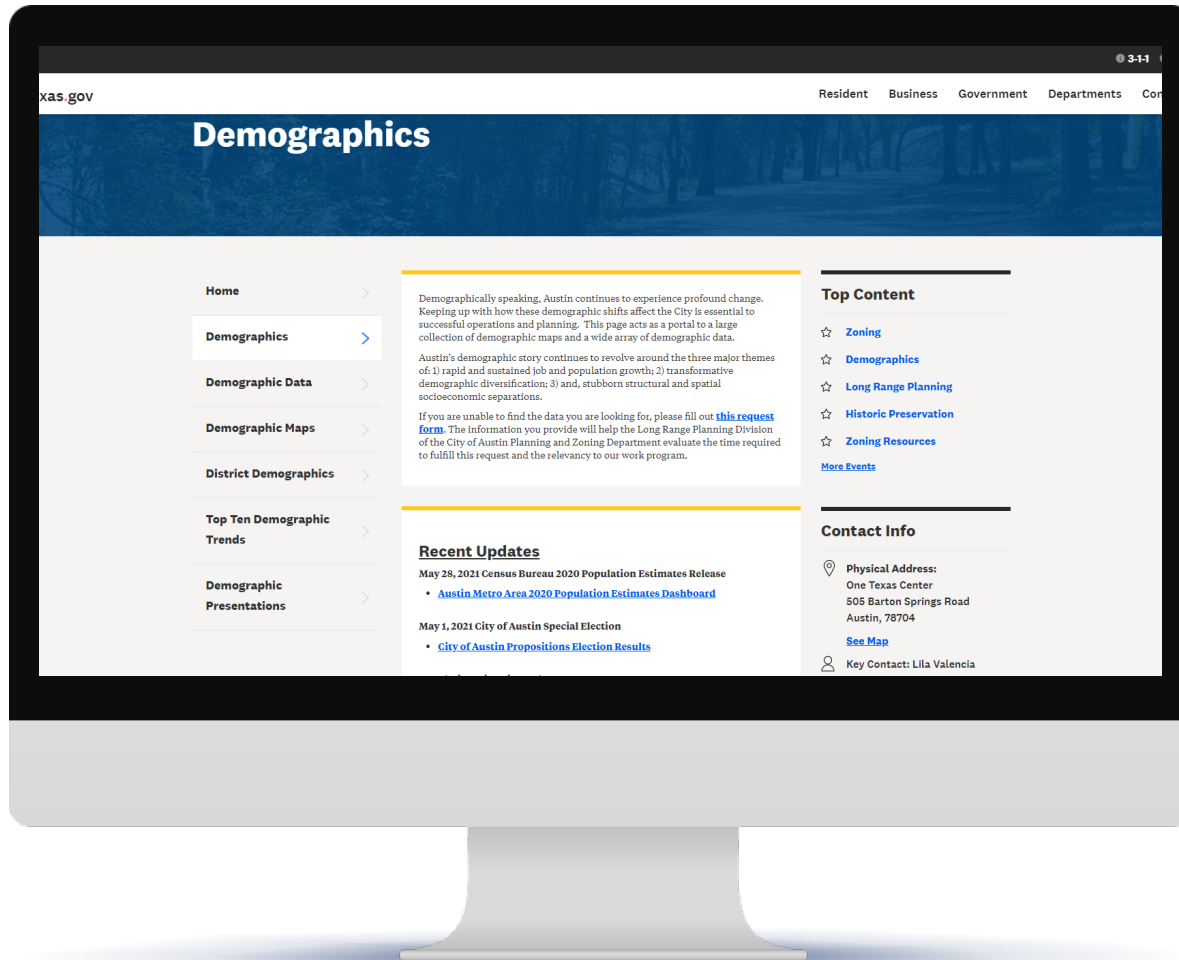


Concurrencies

- Strong growth amidst concerns of displacement
- Increased racial diversity paired with declines among Black and Latino children
- Construction and development along with low housing inventories
- Transit and transportation planning
- Access to schools and health care
- Pressures on utility infrastructure
- Workforce dynamics

Source: U.S. Census Bureau, American Community Survey 2019 1-Year Estimates; ABoR, 2022; Apartments.com 2022





- austintexas.gov/department/demographics
- Recent Updates
 - 2020 Census interactive and static map series
 - 2020 Census dashboard
 - Links to Data Sets in Open Data Portal
- Data Request form
- Sign up [here](#) for occasional emails on our latest demographic analysis.



Q & A





**HOUSING &
PLANNING**

Thank you!

Lila Valencia, Ph.D.

City Demographer

lila.valencia@austintexas.gov