



# City of Austin Emergency Medical Services Department and Austin Fire Department



Wesley Hopkins, Division Chief (EMS)

Tony Haden, Division Chief (Fire)



# City of Austin Emergency Medical Services Our Story

## Start

1976

On January first 1976 Austin EMS was established as a non-civil service municipal department with 32 employees operating BLS ambulances. Austin EMS had 7 units serving a population of 302,500, with a call volume of 5515 per year. Breaking that down further was approximately 15 calls per day and 2 per unit per day. So much different than today's call volume!



## Today

2019

Today Austin Travis County EMS is a civil service organization with an authorized strength of 557 uniformed medics and approximately 70 civilian support staff. EMS runs approximately 123,000 calls a year with approximately 101,000 patient contacts and transports approximately 74,000 people to the hospital. EMS has 46 ambulances- 37 full time ambulances and 9 peak load demand ambulances.



# Founded

1857

Founded in 1857, the Austin Fire Department is now one of the 20 largest metropolitan fire departments in the country, with 49 fire stations located across the city and more than 1,100 employees.



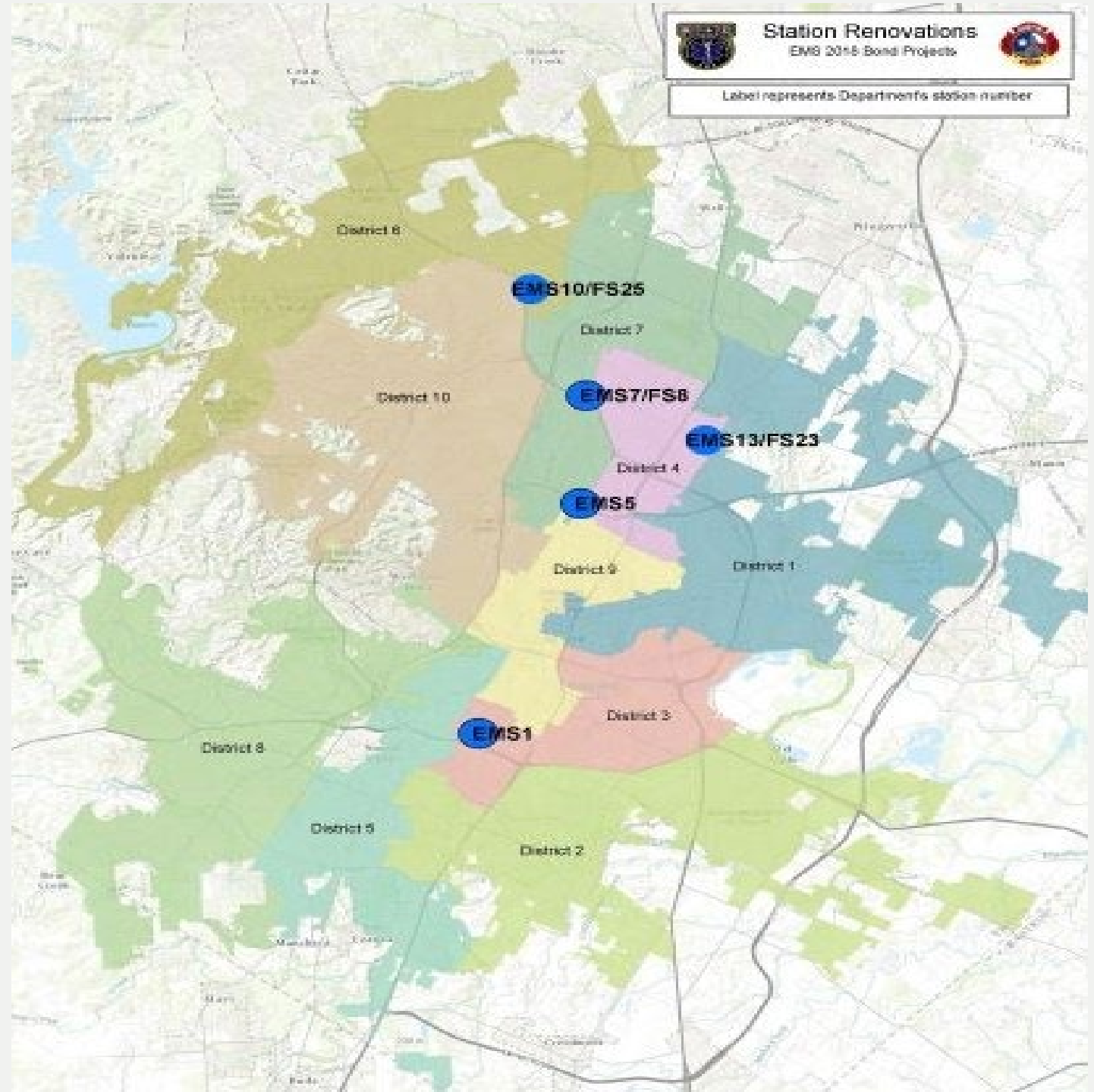
# Commitment

We are committed to the safety of our community through prevention, preparedness, and effective emergency response. Our mission goes beyond our name!

# Our Story

## Austin Fire Department

# Overall Map- Proposed CIP Investments



# Program Detail: Facility Improvement- EMS Station 1

---

- Renovation of existing building systems, building expansion / addition, ADA
- Who will benefit:
  - City-wide, expansion to meet service delivery needs of the community
- Project Examples:
  - Bay addition / expansion to house additional resources to meet service delivery
  - Crew quarter renovation for additional crew members and greater functionality
  - Facility upgrade to meet current ADA and fire code requirements

# EMS Station 1

---



# Program Detail: Facility Improvement- EMS Station 5

---

- Renovation of existing building systems, building expansion / addition, ADA
- Who will benefit:
  - City-wide, expansion to meet service delivery needs of the community
- Project Examples:
  - Bay addition / expansion to house additional resources to meet service delivery
  - Crew quarter renovation for additional crew members, Command District, and greater functionality
  - Facility upgrade to meet current ADA and fire code requirements

# EMS Station 5

---





# Program Detail: Facility Improvement- EMS Station 13 / Fire Station 23

---

- Renovation of existing building systems, building expansion / addition, ADA
- Who will benefit:
  - City-wide
- Project Examples:
  - Crew quarter renovation for greater functionality
  - Crew quarter improvement- Medics currently access common areas through a bathroom
  - Facility upgrade to meet current ADA and fire code requirements

# EMS Station 13 / Fire Station 23

---



# EMS Station 13 / Fire Station 23

---

Crew Entry



Crew Quarter Interior



Station Access  
Through  
Common Area  
Bathroom



# Program Detail: Facility Improvement- EMS Station 7 / Fire Station 8

---

- Renovation of existing building systems, building expansion / addition, ADA
- Who will benefit:
  - City-wide
- Project Examples:
  - Repair structure integrity of crew quarters
  - Crew quarter renovation for greater ergonomic efficiency
  - Facility upgrade to meet current ADA and fire code requirements

# EMS Station 7 / Fire Station 8

---



# Program Detail: Facility Improvement- EMS Station 10 / Fire Station 25

---

- Renovation of existing building systems, building expansion / addition, ADA
- Who will benefit:
  - City-wide, expansion to meet service delivery needs of the community
- Project Examples:
  - Bay expansion to accommodate larger apparatus
  - Crew quarter renovation for greater ergonomic efficiency
  - Facility upgrade to meet current ADA and fire code requirements

# EMS Station 10 / Fire Station 25

---



# Prioritization Criteria & Timeline

- Increased area growth
- Public safety / regulatory compliance
- Failing infrastructure
- Planning Documents
  - EMS and Fire Master Plan
  - Imagine Austin Comp Plan
  - Long-Range CIP Strategic Plan
- 5-6 year implementation cycle

